

Transportation Planning on the Local (MPO) Level

Required for areas with an
Urbanized Area population of
over 50,000

Required Planning Products

- Unified Planning Work Program
- Every Year
- Contains the work tasks for the year

Transportation Improvement Program (TIP)

- Under TEA 21 - Updated every two years
- Under SAFETEA-LU – Updated every four years
- Must include all federally funded projects

Long Range Transportation Plan

- Updated every five years
- Every four years for non-attainment areas
- Comprehensive transportation strategy with a financially constrained element
- Under SAFETEA-LU includes more specific environmental mitigation activities

The 2030 Northwest Arkansas Regional Transportation Plan

- Ambitious Community Outreach Effort
- Shift from “Public” to “Community” outreach effort
- Held nine meetings for the general public

One on One Meetings

- Arranged meetings with:
 - Elected Officials
 - Chamber of Commerce Leaders
 - Business Community Leaders
 - Minority Group Leaders
 - Sierra Club and Audubon Society
 - Bicycle Club Leaders
 - Historic Preservation Groups

Strong Use of Geographic Information Systems (GIS)

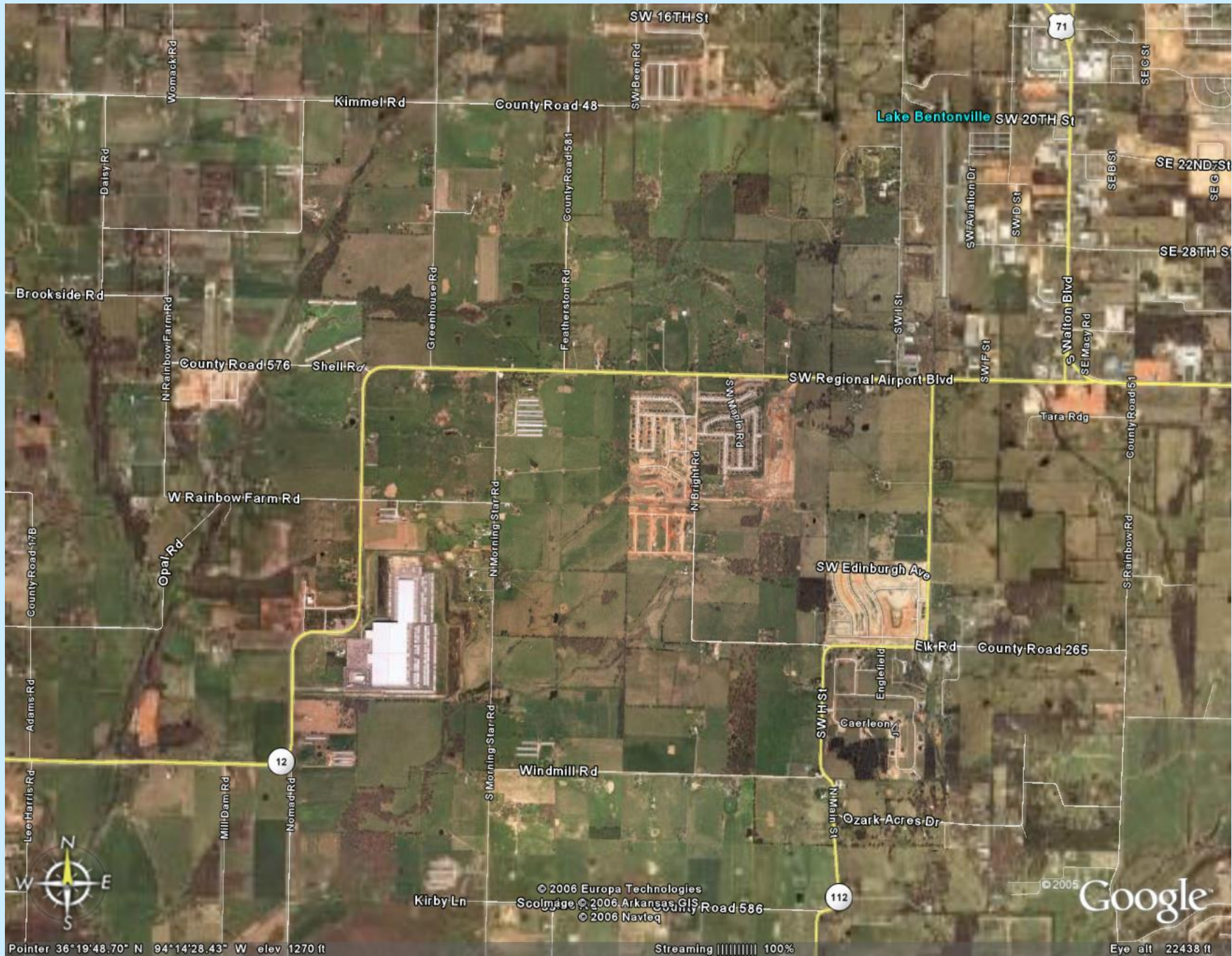
- Density Map of Year 2000 Population
- Density Map of People added from 2000 to 2004

GIS Layers

- Existing Inventory of Four+Lane Roads
- Proposed 2030 Road Network
- Level of Service Map

- Short List of Potential Projects
- Financially Constrained Projects
- Environmental Justice Evaluation
Maps

2004 Aerial Imagery



Lake Bentonville SW 20TH St

SW Edinburg Ave

Google

Pointer 36°19'48.70" N 94°14'28.43" W elev 1270 ft

Streaming ||||| 100%

Eye alt 22438 ft

© 2006 Europa Technologies
© 2006 Arkansas GIS
© 2006 Navteq



Pointer 36°18'49.80" N 94°11'05.99" W elev 1209 ft

Image © 2006 Arkansas GIS
© 2006 Navteq

Streaming ||||| 100%

© 2005 Google

Eye alt 2383 ft



Pointer 36°16'16.34" N 94°07'09.96" W elev 1337 ft

© 2006 Europa Technologies
Image © 2006 Arkansas GIS

© 2006 Navteq

Streaming | 100%

Google

Eye alt 5842 ft

We are still developing regional links and arterials

Potential Data Sets Needed:

1. Updated Aerial Imagery
2. Digital Terrain Model
3. Soil Types
4. Grave Yards
5. Historic Sites
6. Wetlands
7. Etc.