

# Conservation and Transportation Colorado Pilot Workshop 2006

## **Tools and Approaches with CDOT Environmental Geodatabase and Data Initiative**

### Who and What:

**Intro Concepts:** Kimberly Majerus, FHWA-Resource Center near Chgo

**CDOT:** Roland Wostl, CDOT, Env Progr Brch, Env Planning Section

**Handout:** other references and web sites (see folder)

# Topics: Tools and Approaches

- Factors for Decision-Making, Uses of Tools
- Examples: Conservation with Transportation
- Colorado Example of Tools & Approaches:  
Speaker: Roland Wostl  
Topic: CDOT Environmental Geodatabase and Data Initiative

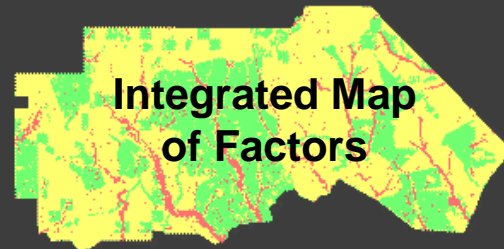


**Support for  
Transportation  
Decisions**

**Integrate Information,  
People, and Decisions**

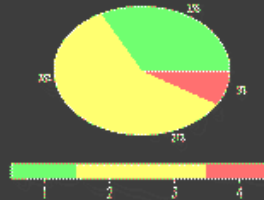


**Wildlife, Fish,  
Ecology,  
Wetlands,  
Water**



Map composite of environmental sensitivity

- 1) Least Sensitive
- 2) Potentially Sensitive
- 3) Moderately Sensitive
- 4) Most Sensitive



**Contaminants/  
Haz Waste**

**Community  
Values  
and Public  
Involvement**

**Env Methods,  
Tools,  
and GIS**

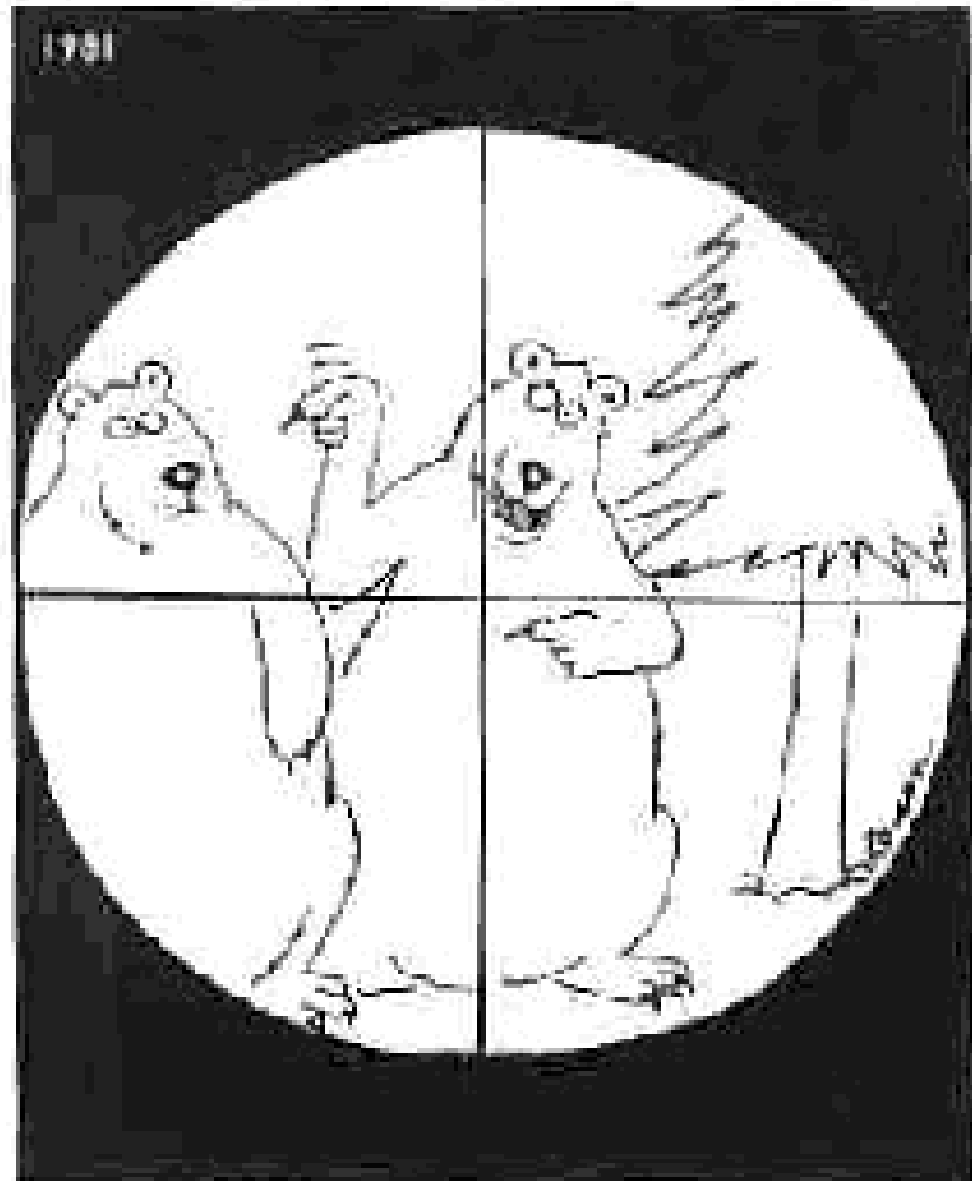
**Air Quality  
and Noise  
and other Issues**

**Cultural  
Resources  
and Tribal  
Coordination**

**Integration?**

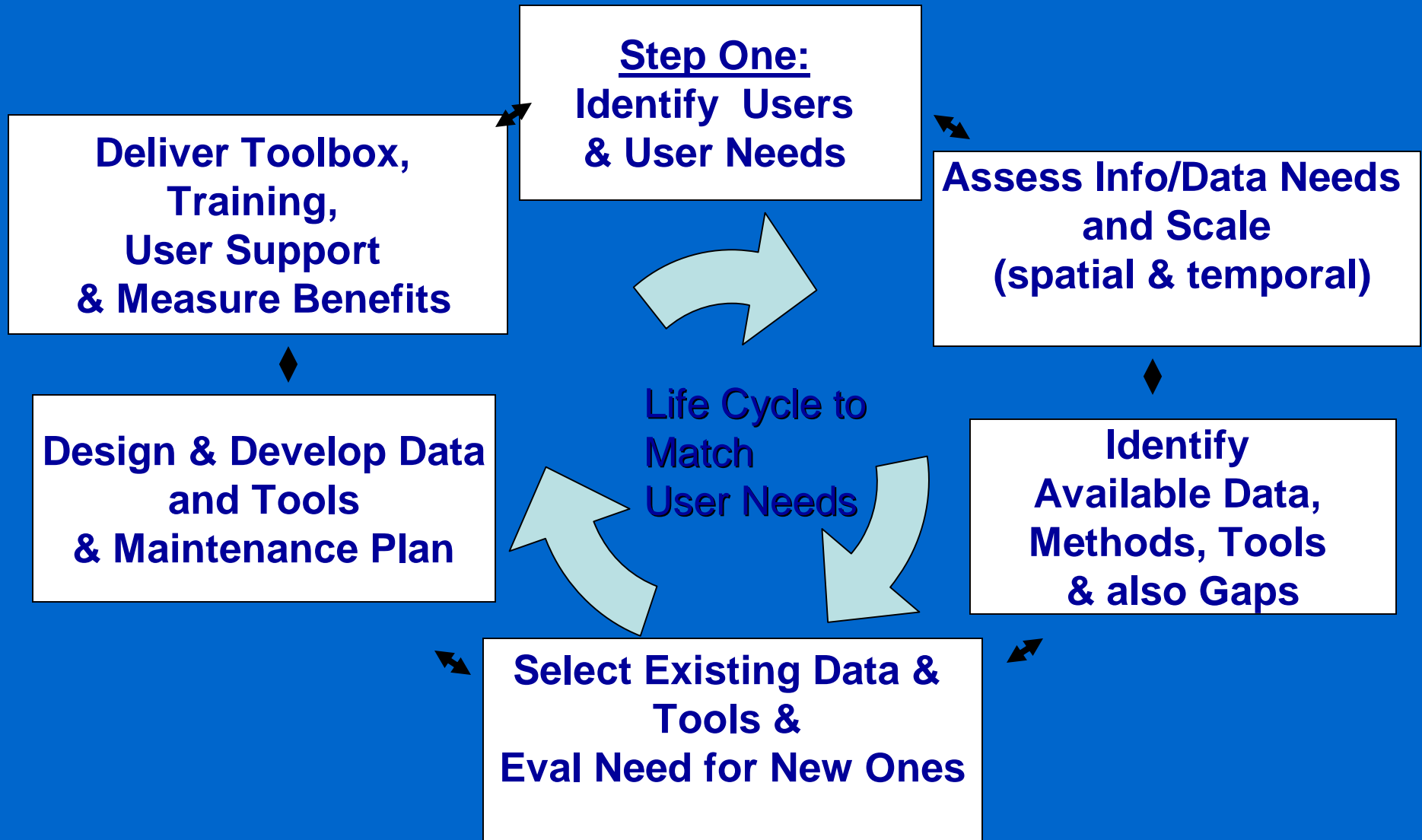
**a wildlife  
example**

*Far Side cartoon  
by Larson*



# Use and Integration of Tools – How do we get there?

## Technology Life Cycle to Match User Needs



# Based on Information Needs – What Data is Already Available?

National Spatial Data Infrastructure (NSDI)

Develop, Access, Use -Data at Various Levels

Regional & National



County/Parish



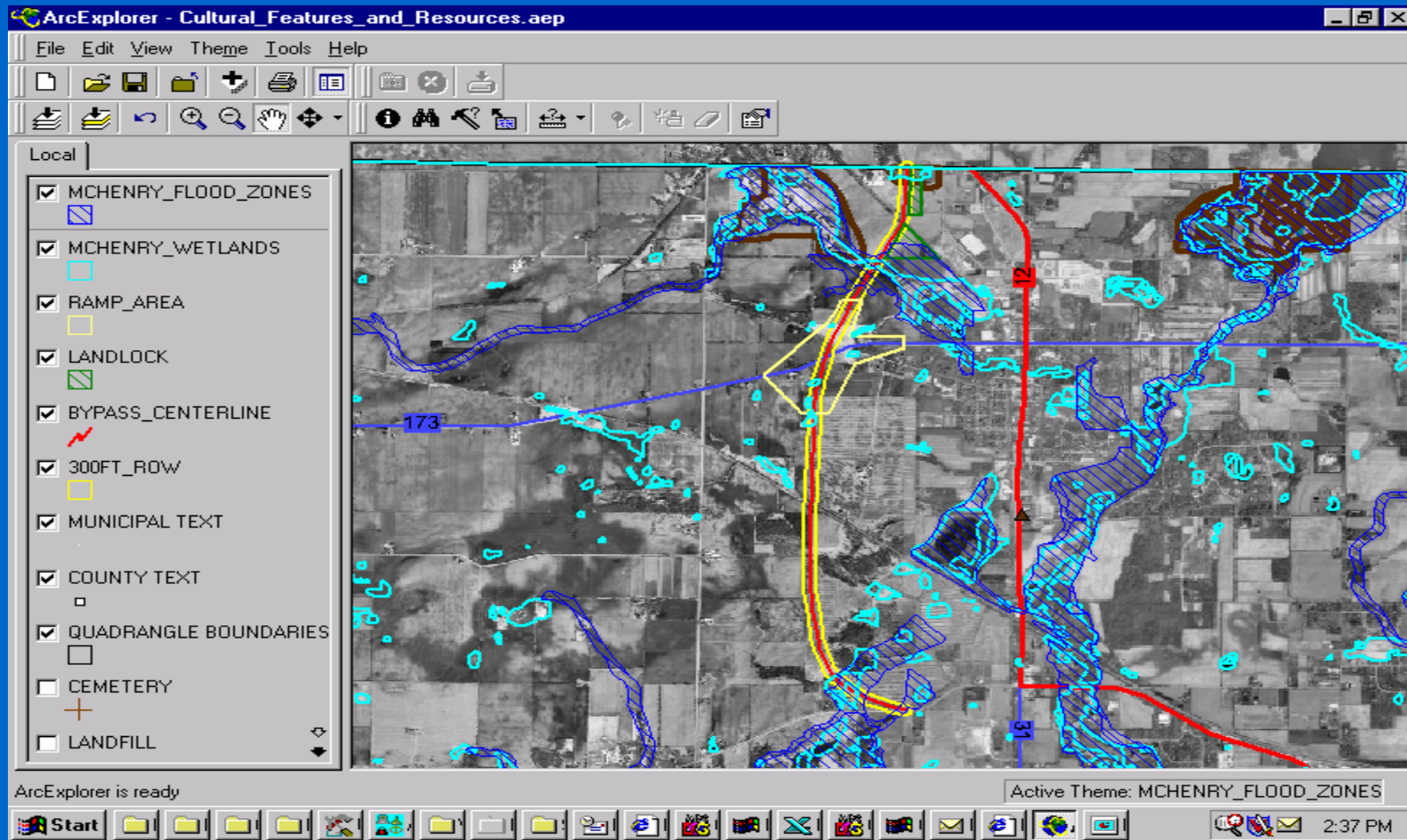
Local Data & Uses

## NSDI Available for:

- Data exchange,
- Aggregation,
- Multi-level, multi-purpose
- Analyses
- Metadata use

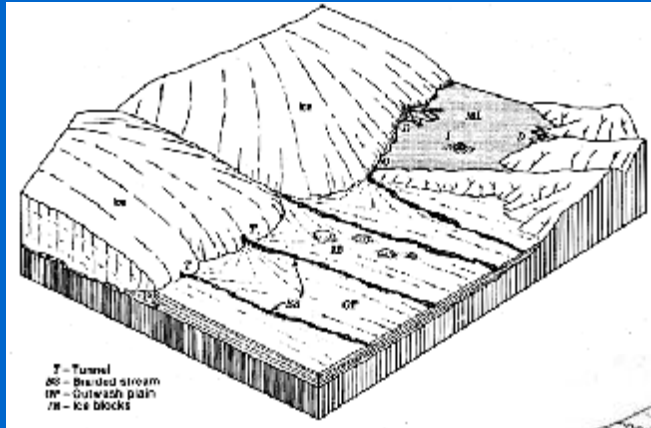
# Illinois DOT example use of NSDI Free Environmental GIS Data on Web

*Integrate Avail Data -NWI Wetlands, Hydric Soils, Floodplains, & Orthophotos*

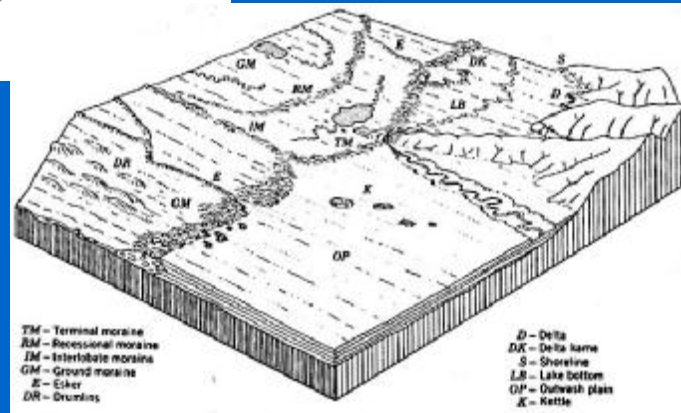


# Information for Decisions: Natural Environment, Natural Foundation

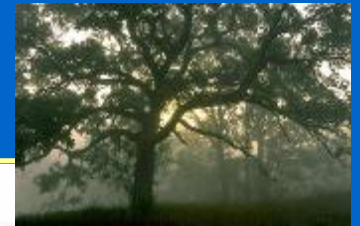
IL- 10,000 yrs ago - Landforms



Weathering through time



Existing: Oak Savanna



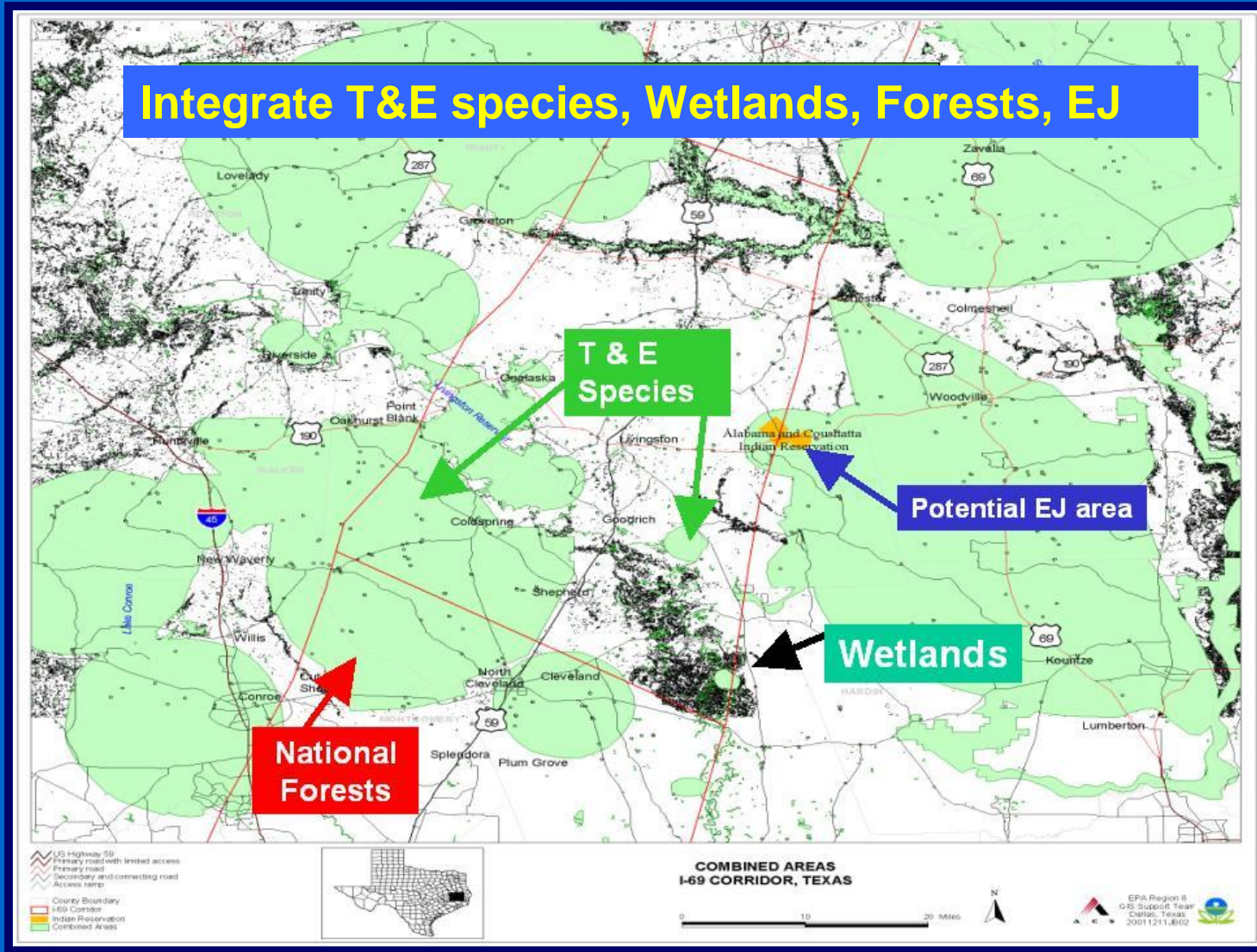
## Natural Environment

- *Topography*
- *Slope*
- *Soils*
- *Parent Material & Geology*
- *Hydrology & Drainage*
- *Vegetation (example, wetlands)*





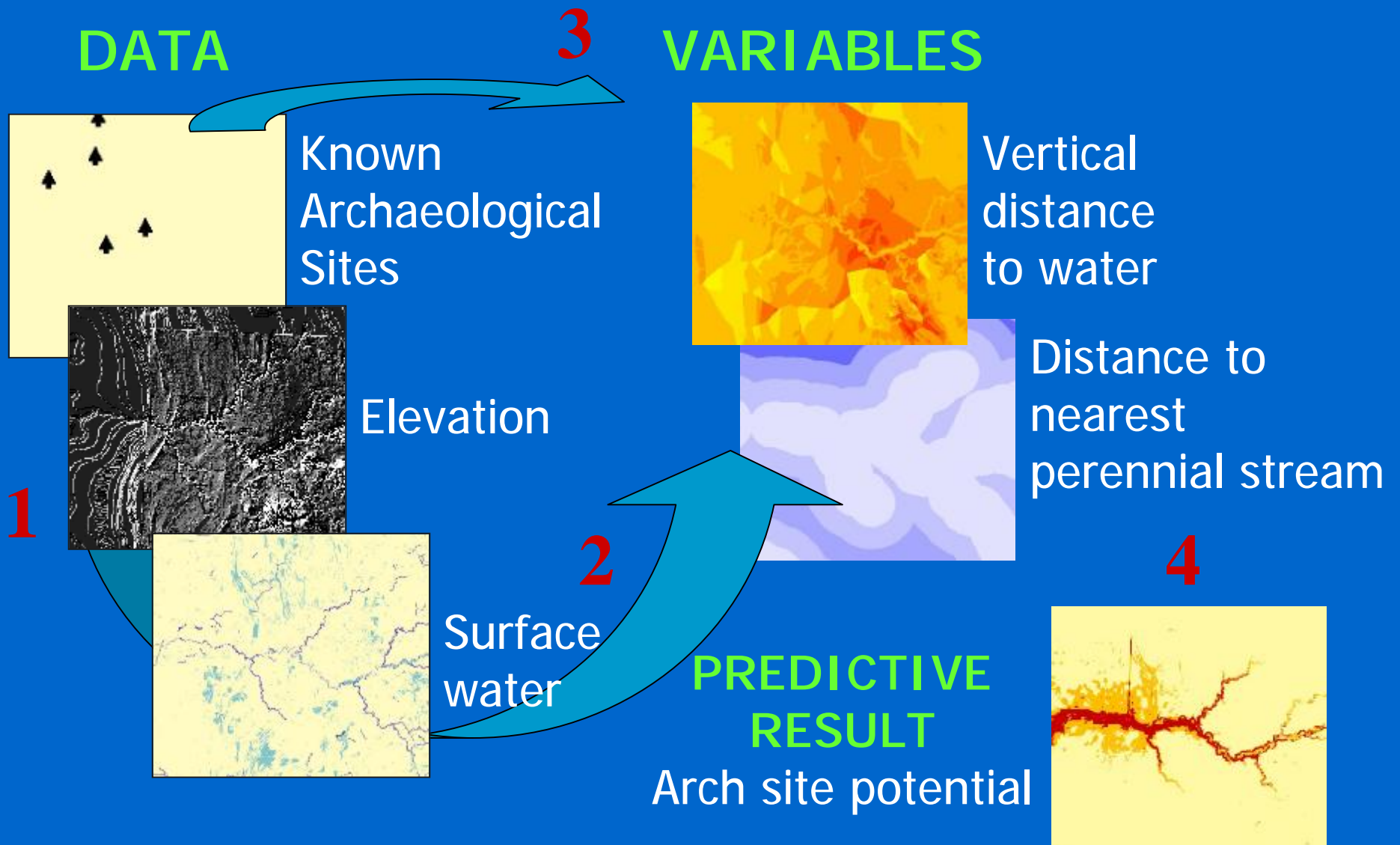
# Texas GIS Environ Screening Tool



From US EPA's GISST animated demo

<http://www.epa.gov/4d/epa/gis/gis/gis2a2.htm>

# Power Tools – GIS Analysis – MN GIS Predictive Modeling



# Power Tools: GIS Analysis

## IL GIS Simulation, Predictive Modeling for Impact Assessment, Mitigation, and Monitoring

### GIS Model Simulations:

Baseline before construction

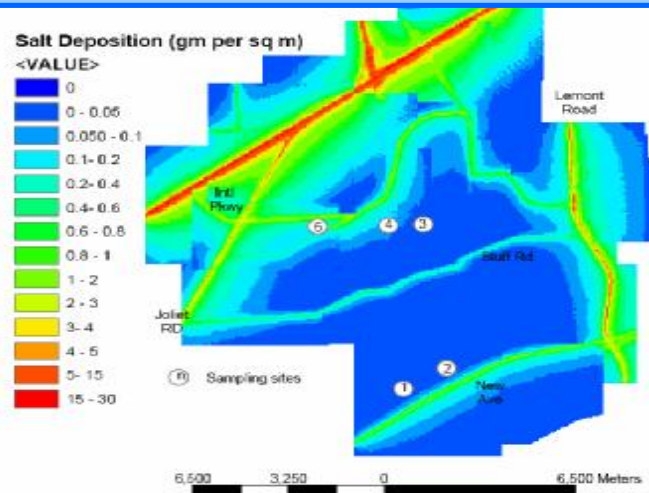
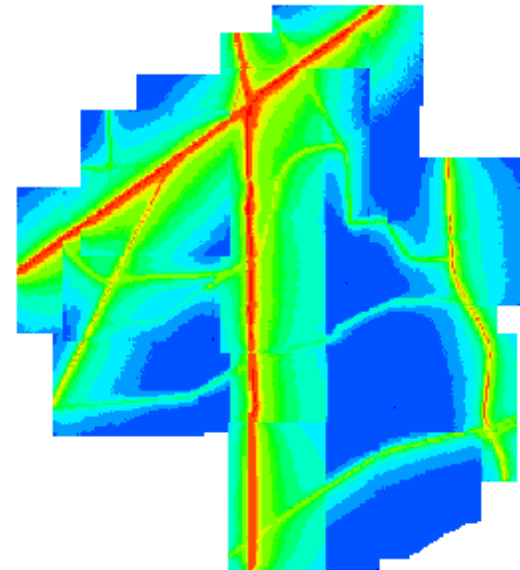


Figure 13. Model Simulations of Salt Deposition Near the Sampling Sites

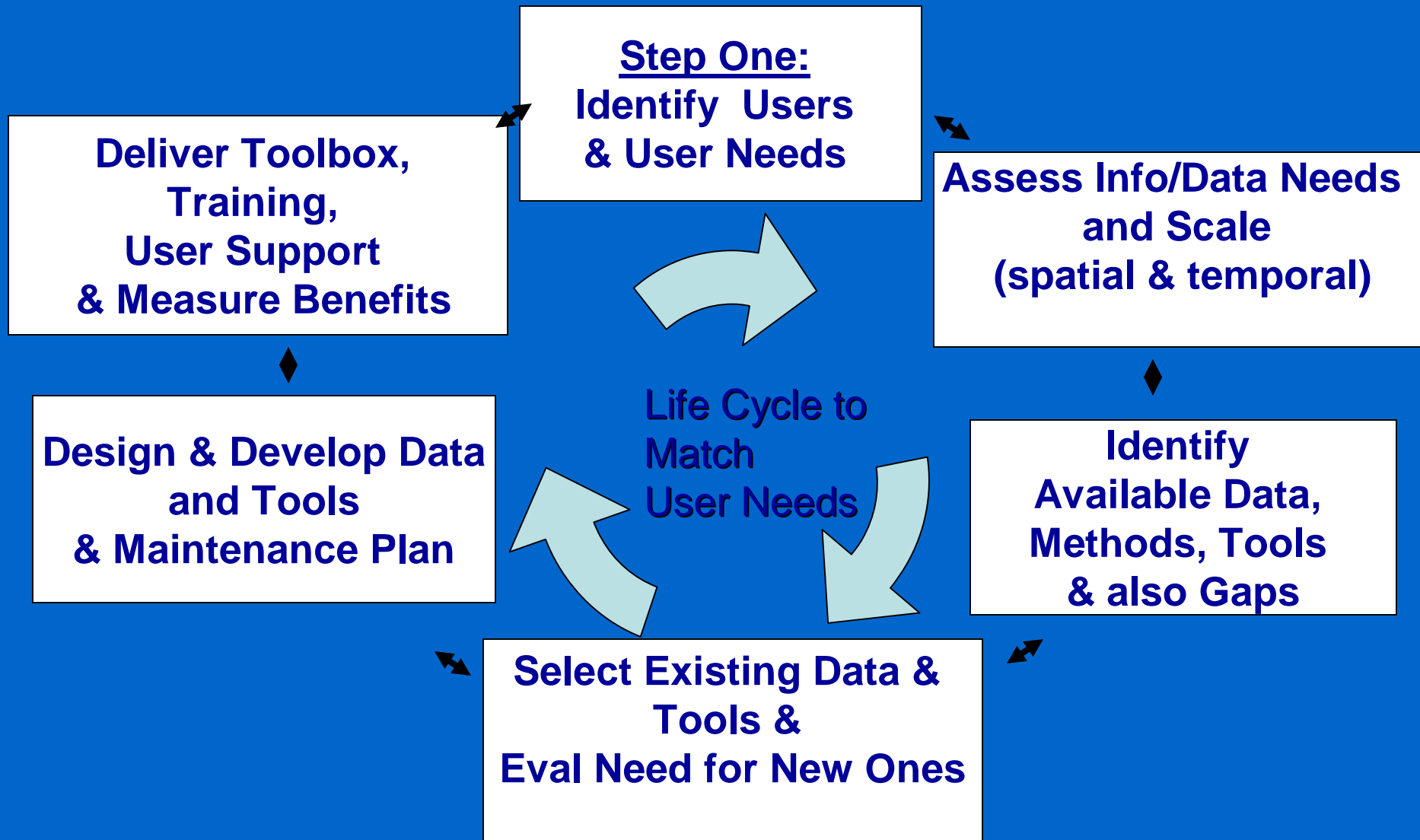
**Predicted Model Results: After construction**



↑ Proposed  
Trans

# Use & Integration of Tools –How do we get there?

## Technology Life Cycle to Match User Needs



# Based on User Needs -

## What tools are available? Identify Gaps?

### Example: Framework for tool evaluation

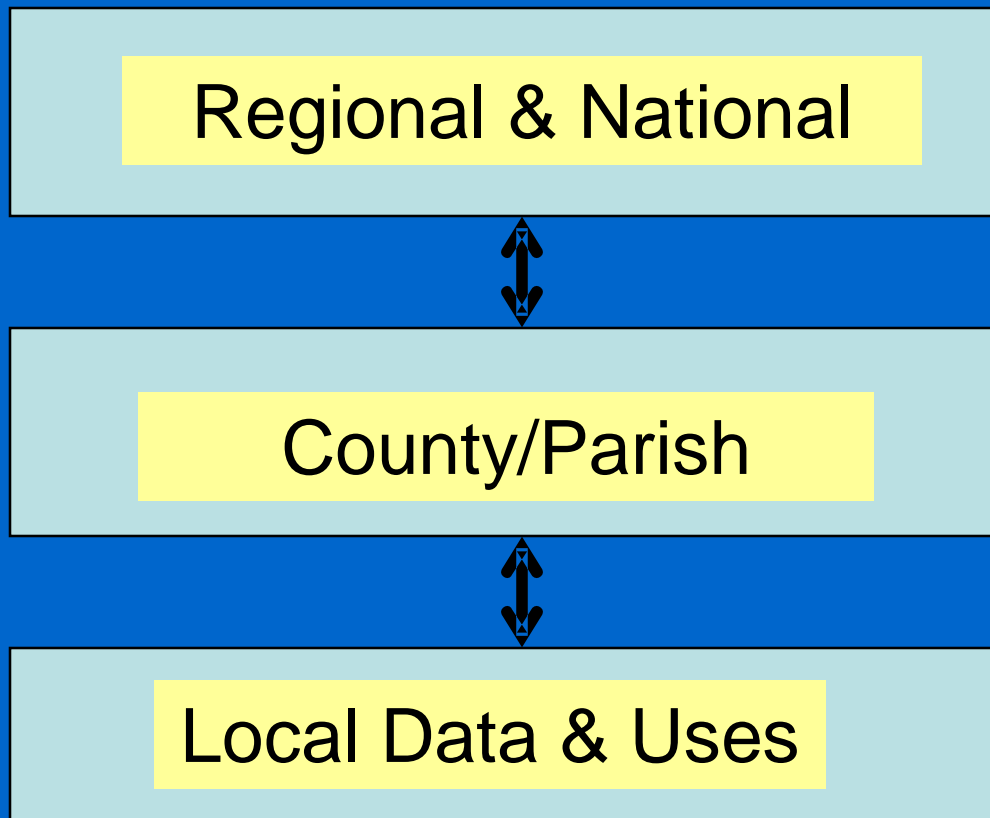
<i>Functions</i>	Information gathering and management	Goal setting and evaluation	Threat ID and impact analysis	Threat mitigation analysis	Conservation area selection	Ecosystem Management
<i>category</i>	ID planning boundaries Ecosystem process models Element selection Element requirements Include confidence info Set ecological goals Set economic goals Include multiple stakeholders Allocate goals	ID threats to eco goals Impact analysis on eco viability ID threats to econ goals ID compatible land-use	ID restoration areas Reserve scenarios	Scenario comparison Cost/benefit analysis Stakeholder involvement Implementation plan support ID EM indicators Monitoring plan	Implementation plan Implementation budget calculation Evaluation and monitoring Evaluation and adaptive mgt	

By NatureServe/Packard Foundation 2004

# For information needs & uses— for CO

What info/data is available?

Ways to make data avail/share?



- NSDI ([www.geo-one-stop.gov](http://www.geo-one-stop.gov))
- Other offices
- Other agencies
- Other sources
- Data Collection Needed?

# **NEXT – Colorado Highlight of Tools and Approaches**

**Roland Wostl, CDOT, Environ Programs  
Branch, Environ Planning Sections**

**Topic: CDOT Environmental Geodatabase  
and Data Initiative**