

Teton Regional Land Trust

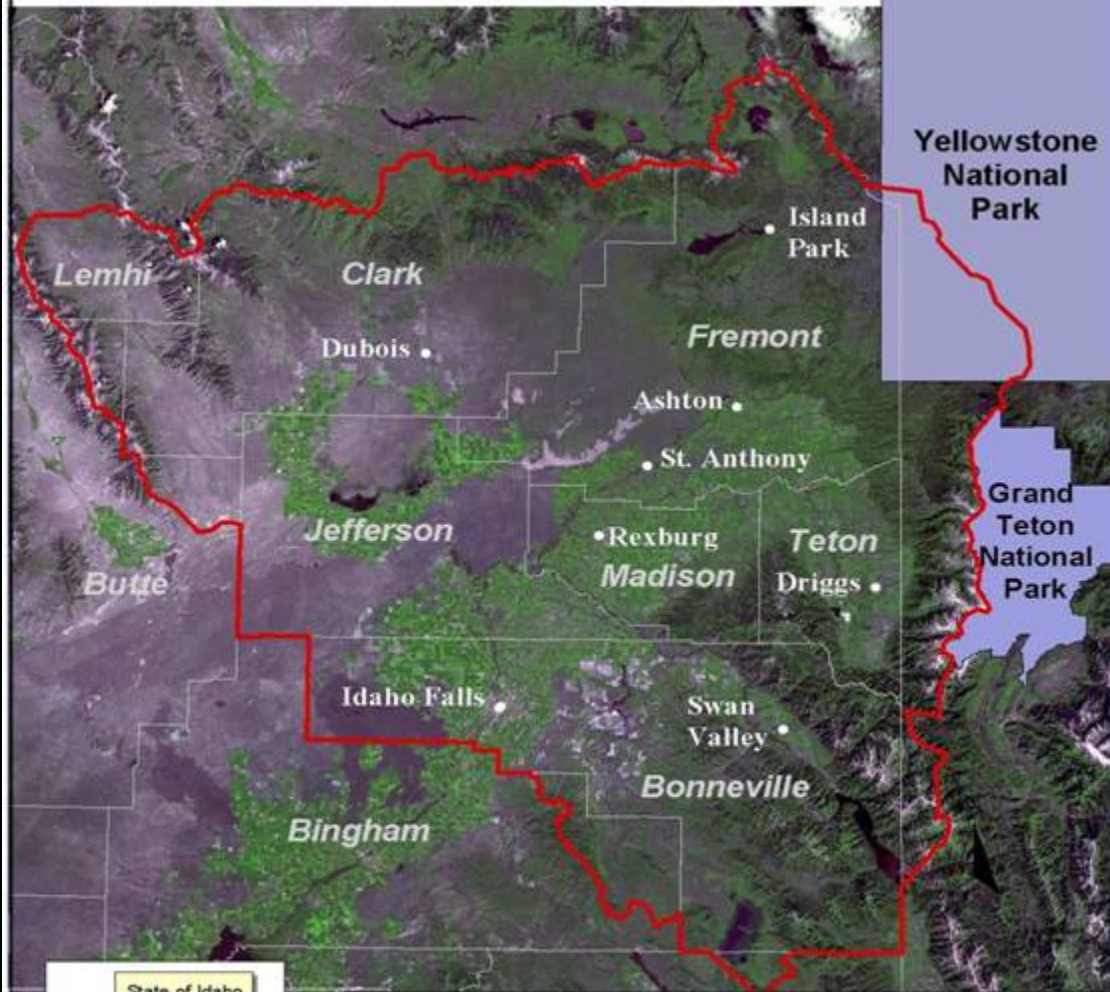
Protecting and Restoring High Priority Habitats in the Upper Snake River Valley



2007 Northwest Regional LTA Conference

Rob Cavallaro, Stewardship Director (c) TomVezo.com

Teton Regional Land Trust Service Area



State of Idaho

Map
Detail



Fremont = County

● Island Park = Town or City

▭ = TRLT Service Area Boundary

20 0 20 40 60 Miles

Priority Natural Elements Dependent on Private Lands in the Upper Snake River Watershed

- *Rare Plants/Communities*
- *Yellowstone Cutthroat Trout*
- *Big Game Winter Range and Transitional Habitat*
- *Large Carnivores*
- *Sage and Sharp-tailed Grouse*
- *Waterbirds*

Comprehensive Stewardship Performance in a Priority Landscape

Core program

- *baseline documentation*
- *stewardship endowment*
- *annual monitoring, landowner relationships*
- *Records*

Strategic Program...



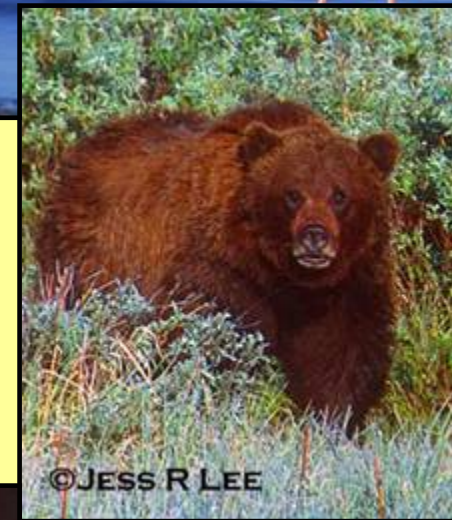
Strategic Program for Protecting Priority Natural Elements

- collaborative conservation planning
- coordination with land protection
- resource surveys-ecological monitoring
- targeted restoration – enhancement benefits high priority conservation species
- property management



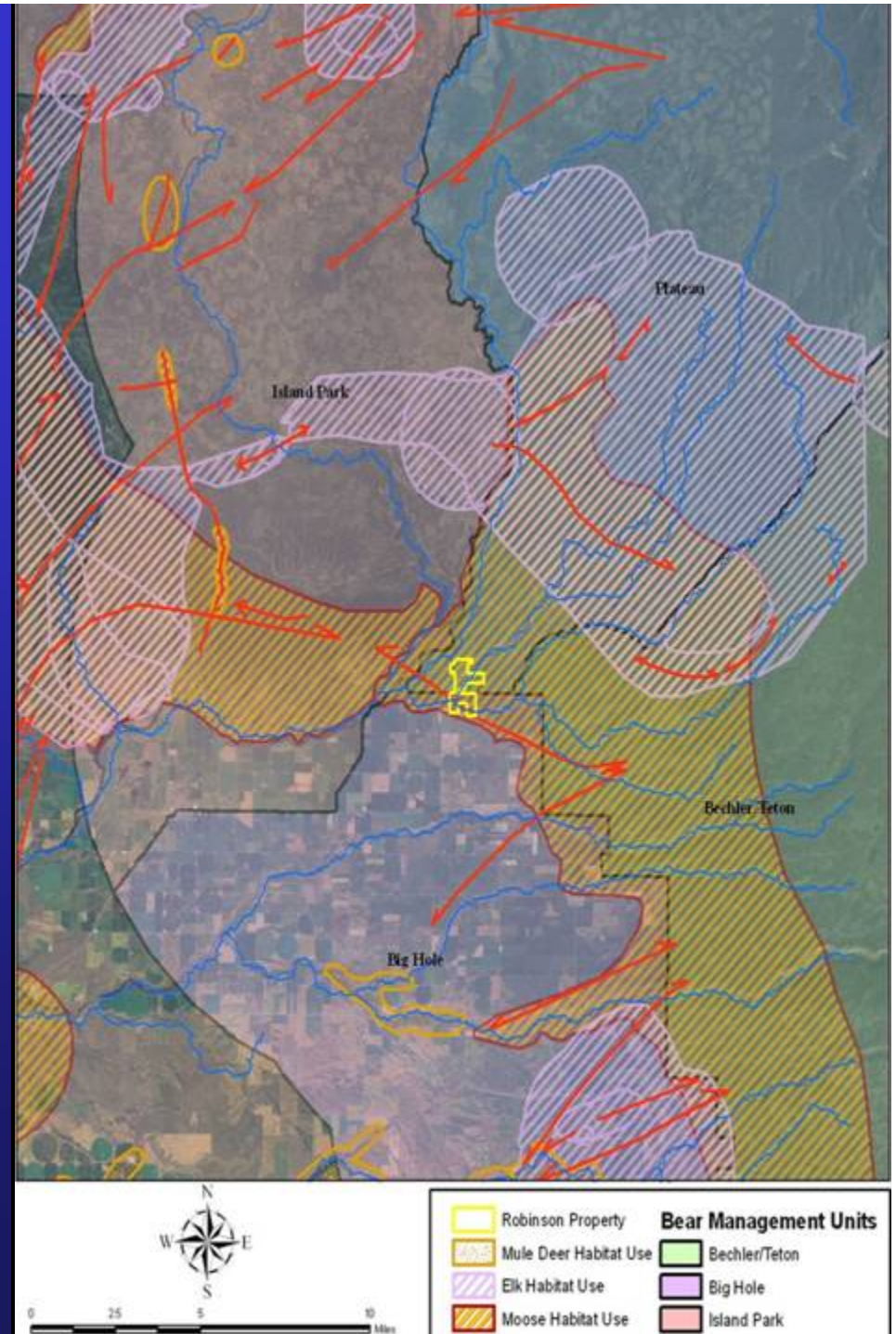
Collaborative Conservation Planning

- **Idaho Department of Fish and Game and Idaho Conservation Data Center**
- **Greater Yellowstone Area Initiatives:
Henry's Fork Watershed Council, Trumpeter Swan Society**
- **TRLT and Partners, Focal Area Planning
(area specific efforts for target species/habitats)**
- **Idaho Partners in Flight**
- **Idaho Bird Inventory and Survey (IBIS)**
- **USFWS – Migratory Bird Office**
- **Baseline Inventories/Expanding GIS Program**



Conservation Planning Products

Coordination with Land Protection Staff



Resource Surveys, Ecological Monitoring

Bird Monitoring



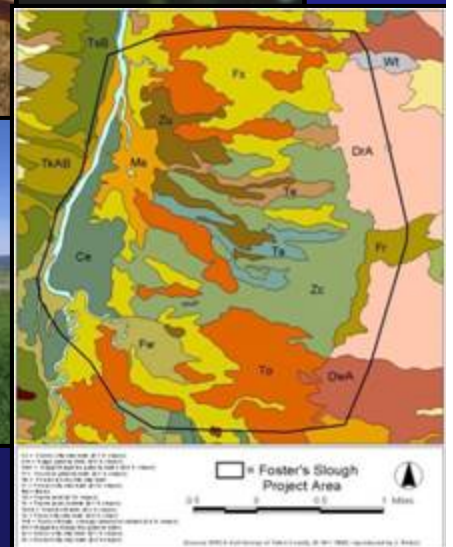
Native Trout



Plant Communities

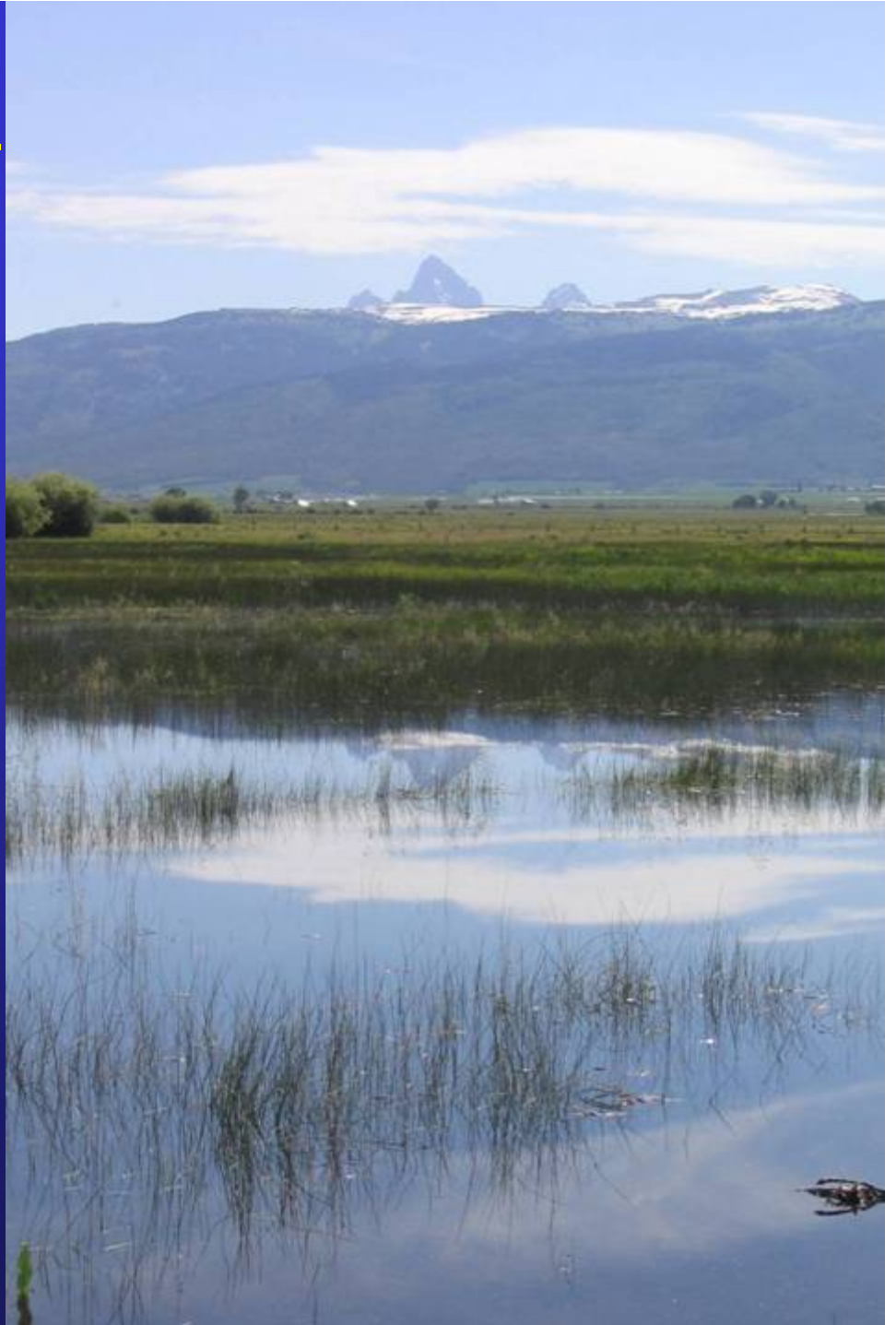


Baseline Documentation
and Easement Monitoring



Habitat Restoration Program

- *Program Guided by Board of Directors approved policies*
- *All restoration projects must be approved by Board*
- *Projects Must be on easement-protected lands*
- *Must have management to protect restoration investment*
- *Must target priority species and have landscape-scaled benefits*





Property Management

TRLT-Owned Properties

- Teton River Property



- Woods Creek Fen



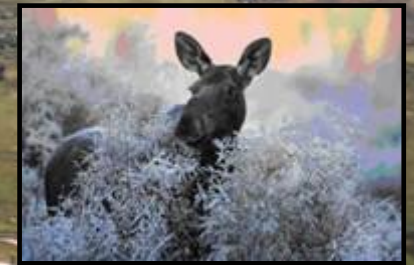
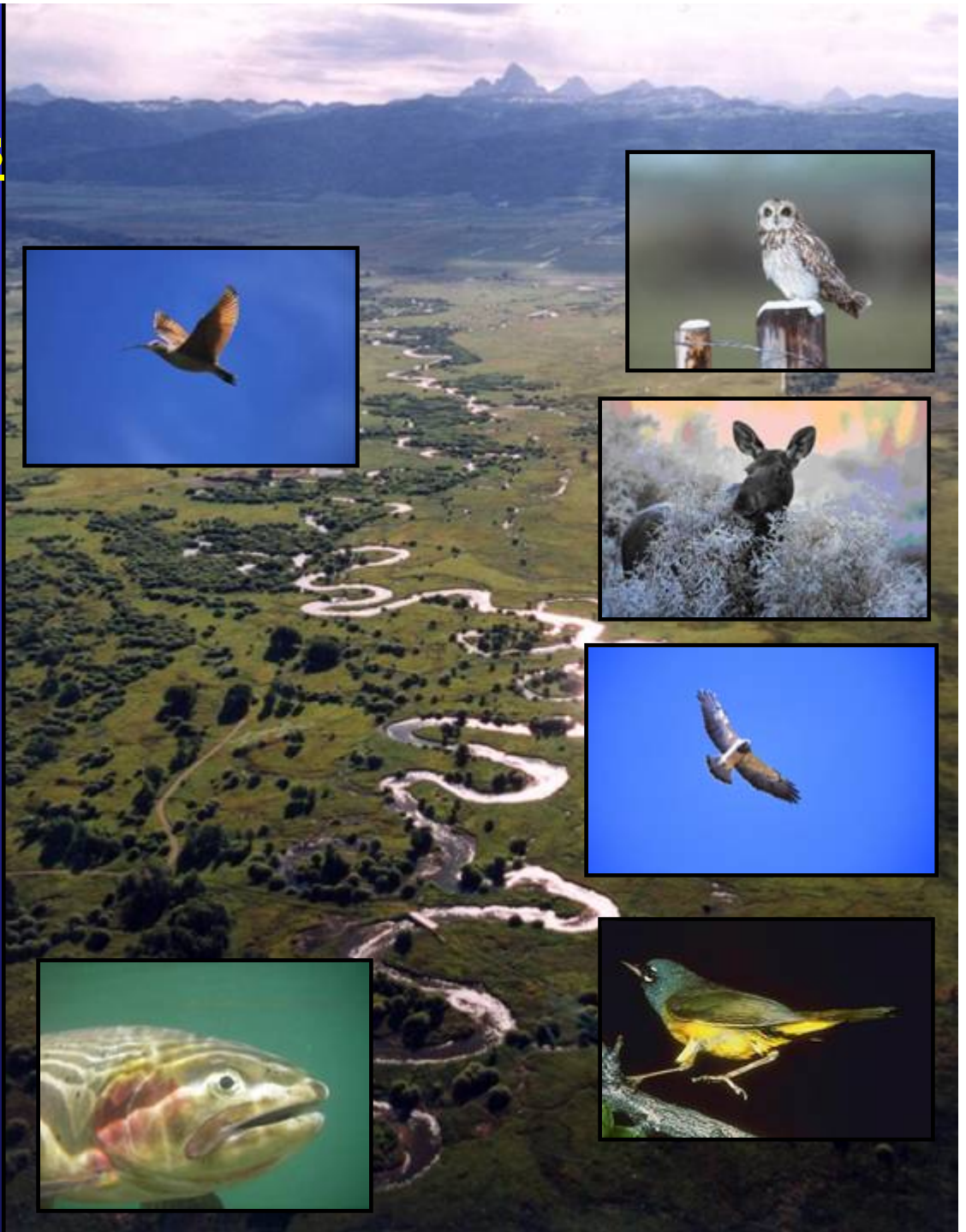
- Spring Creek Wetland



Lower Teton Creek Conservation Easements

Two landowners – 1014 acres

Wildlife and sustainable
agriculture







Wetland Enhancement

Enhance four wetlands within property complex to provide habitat for waterbirds



Monitoring



Acknowledgements

US Fish and Wildlife Service, Idaho Dept. Of Fish and Game, NAWCA, National Fish and Wildlife Foundation, Wildlife Habitat Council, Intermountain Aquatics Inc. Western Watersheds LLC, EPA, Lew and Jill Mithun, Jerry and Veisha Kirk, Friends of the Teton River, Tom Vezo, Jim Berkenfield, Many Volunteers