

SAFETEA-LU: New Opportunities for Transportation Integration

New Partners for Smart Growth

February 8-10, 2007

Los Angeles, CA

Shari Schaftlein

Federal Highway Administration

Shari.Schaftlein@dot.gov



How does 6001 fit?

- Bring 6001 environmental provisions into the context of planning activities, NEPA, and environmental review

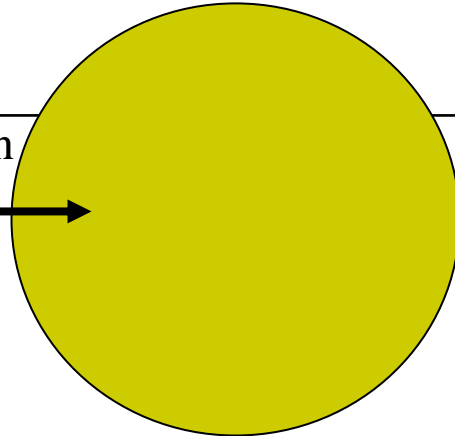
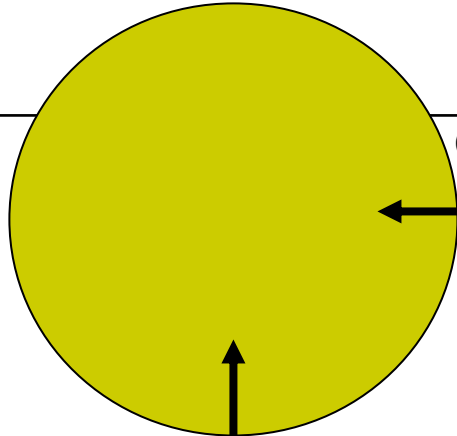


System-level
Planning

Transportation

Resource Agency

System-level
Planning



Integrated
Planning,
Consultation

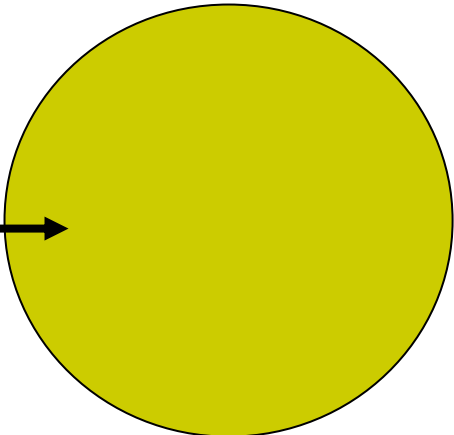
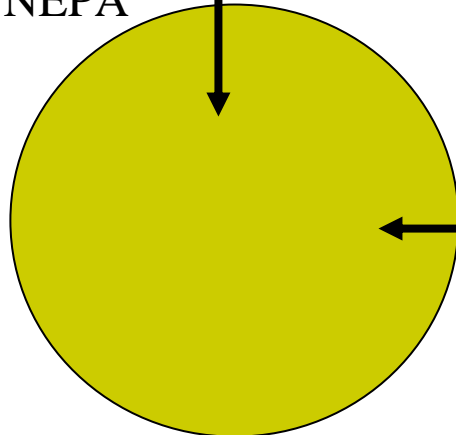


6001

Linking
Planning and
NEPA



**2005
Guidance**



Impact
Analysis,
Review



6002

Project-level
Decision

Project-level
Decision₃

Planning Products Used in NEPA

- Development and/or refinement of **purpose and need** statements.
- **Corridor or subarea studies** may evaluate or eliminate alternatives or be used to refine purpose and need.
- Analysis of the **affected environment**.
- Analysis of **indirect and cumulative impacts**.

2005 Linking Planning and NEPA Guidance

- Supports Congressional Intent
 - Elimination of MIS
 - Planning should be foundation for project development
- Voluntary
- Planning varies across the country
- Does not NEPA-ize Planning
- Extensive coordination with national stakeholder groups and agencies
- Based on legal opinion



Section 6002 of SAFETEA-LU, “Efficient Environmental Reviews for Project Decisionmaking”

New provisions for delivering highway projects
and new opportunities for involvement, from
agencies and the public.

Final Guidance available at :

<http://www.fhwa.dot.gov/hep/section6002/index.htm>

SAFETEA-LU 6002

- ❑ Defines an “Environmental Review Process”
- ❑ Lead agencies must invite all agencies with interest in project to be “participating agencies”
- ❑ Establishes timeframes for reviews
- ❑ Participating agencies and the public be involved early in the process
- ❑ Makes funding available for resource agencies to contribute to process improvements (includes planning)
- ❑ Establishes statute of limitations (180 days)

Goal: Better decision-making, process predictability



Smart Growth opportunities in 6002

- Participating agencies
- Coordination Plan
 - Public involvement program
- Methodology
 - Visualization

Linking Planning and NEPA: Connecting SAFETEA-LU Sections

Section 6001

- Coordination with land and resource agencies, others
- Consideration of land use, resource concerns in the planning process

Linking Planning and NEPA

- Mechanisms and tools for coordination
- Planning products for use in NEPA

Section 6002

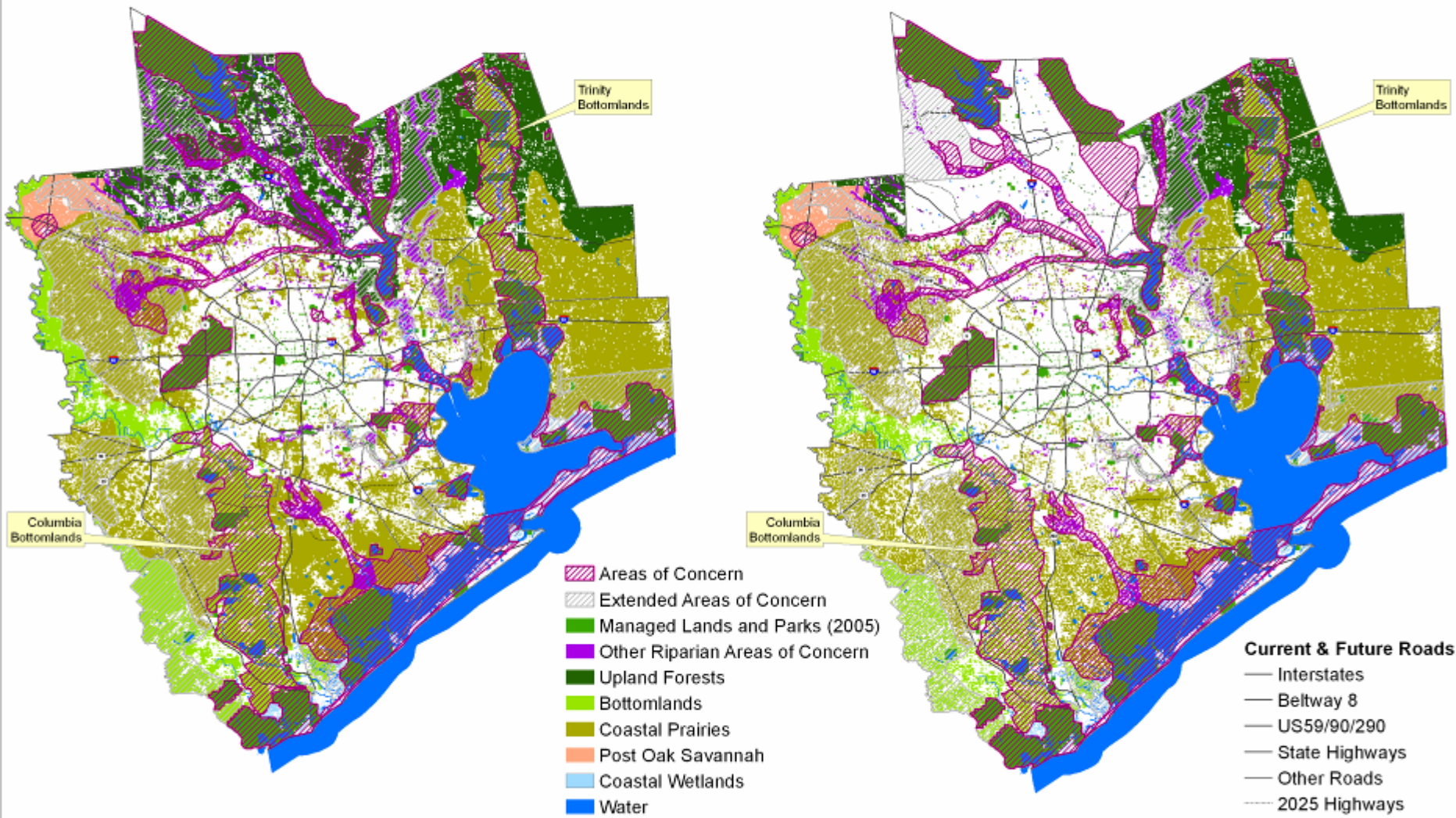
Early coordination with resource agencies, other stakeholders for process improvement and higher predictability

Undeveloped Environmental Resources

DRAFT

2005

2035



- Areas of Concern
- Extended Areas of Concern
- Managed Lands and Parks (2005)
- Other Riparian Areas of Concern
- Upland Forests
- Bottomlands
- Coastal Prairies
- Post Oak Savannah
- Coastal Wetlands
- Water

Current & Future Roads

- Interstates
- Beltway 8
- US59/90/290
- State Highways
- Other Roads
- 2025 Highways

Not to be reproduced or published without the consent of H-GAC.

0 5 10 20 30 40 Miles



Resources and upcoming opportunities to learn more about 6002 Environmental Review Provisions

Environmental Review Toolkit:

- <http://environment.fhwa.dot.gov/index.asp>
- <http://www.fhwa.dot.gov/safetealu/index.htm>
- <http://www.fhwa.dot.gov/hep/section6002/index.htm>

Re:NEPA:

- <http://nepa.fhwa.dot.gov/ReNepa/ReNepa.nsf/home>

AASHTO Center for Environmental Excellence:

- <http://www.environment.transportation.org/>



Upcoming events:

- CTE Broadcast: April '07 (6001 focus)
- Updated NEPA 101 course
- Resource Agency webinars:
February 13 & 27

Future Products:

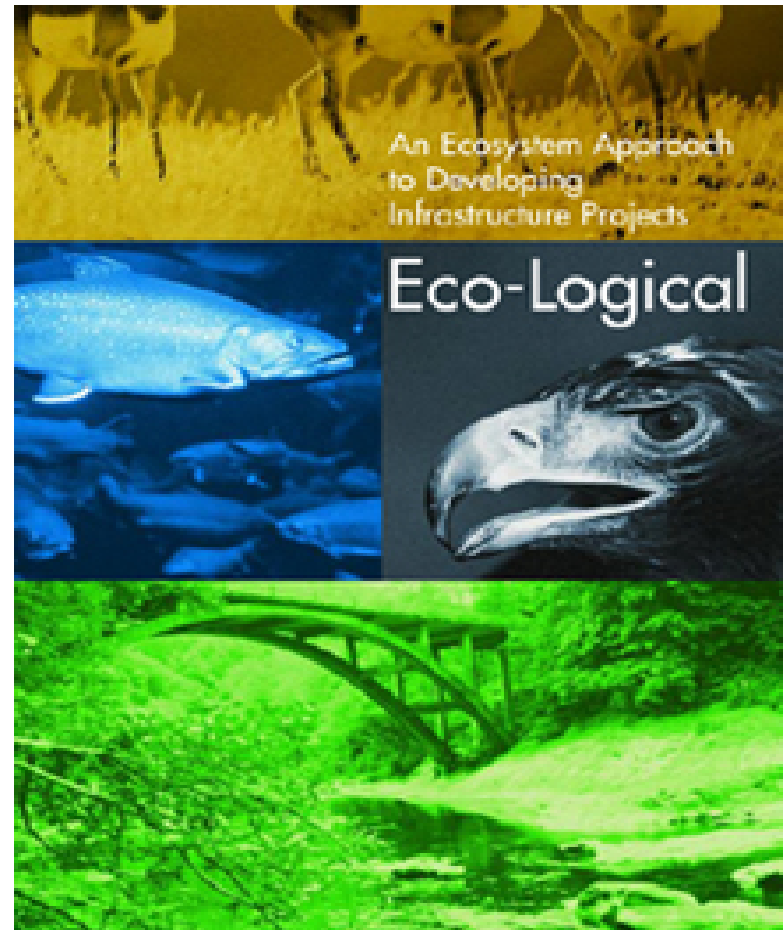
- FAQs for 6002 Guide
- 771 rewrite
- Technical Advisory

Related Efforts: Eco-Logical

- ❑ Eco-Logical encourages flexibility in regulatory processes
- ❑ Lays conceptual groundwork for integrating plans across agency boundaries
- ❑ Endorses ecosystem-based planning and mitigation

Signatory Agencies:

- ❑ BLM, EPA, FHWA, NOAA Fisheries Service, NPS, USACE, USFS, USFWS



Integrating the Eco-Logical Approach to Transportation and Resource Planning: A FHWA Solicitation

- **Anticipated Feb/March 2007 solicitation**
- **Applicants: DOTs, MPOs, COGs, State/Federal resource agencies, local govts., Tribal, NGOs, Academia, Others**
- **Develop & test approaches to implement transportation/resource planning**
- **Access to technical guidance & assistance.**

Supporting Resources for Proposals:

- *Eco-Logical* publication
- §6001 planning provisions & §6002 environmental review process
- Linking Planning and NEPA guidance
- EO 13274: collaborative and interdisciplinary approach to planning & project development
- FHWA Stewardship & Streamlining Vital Few Goal

More info: Bethaney.Bacher-Gresock@dot.gov or 202-366-4196

Context can mean different things to different species.



What does Context Sensitive Solutions really mean?

CSS is a collaborative, interdisciplinary approach that involves all stakeholders to develop a transportation facility that fits its physical setting and preserves scenic, aesthetic, historic and environmental resources, while maintaining safety and mobility.

A CSS approach considers the total context within which a transportation project will exist.

“finding the best fit”

Context Sensitive Solutions Improving Streetscapes

Gervais Street – US 1 (SC)



Best Practices in CSS-CSD



SAFETEA-LU

TITLE VI--Transportation Planning And Project Delivery

□ Amends Title 23 § 109

SEC. 6008. INTEGRATION OF NATURAL RESOURCES INTO TRANSPORTATION PROJECT PLANNING AND DELIVERY

Section 109(c)(2) of title 23, United States Code

(1) by striking 'consider the results'

'(A) the results';

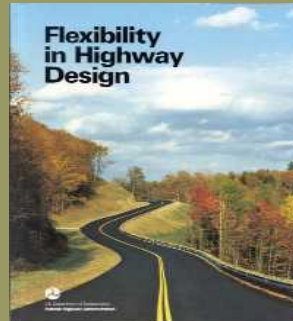
(2) by striking the period at the end of

(3) by adding at the end the following:

'(B) the publication entitled 'Flexibility in Highway Design' of the Federal Highway Administration;

'(C) 'Eight Characteristics of Process to Yield Excellence and the Seven Qualities of Excellence in Transportation Design' developed by the conference held during 1998 entitled 'Thinking Beyond the Pavement National Workshop on Integrating Highway Development with Communities and the Environment while Maintaining Safety and Performance'; and

'(D) any other material that the Secretary determines to be appropriate.'.



CSS Principles and Design Guides

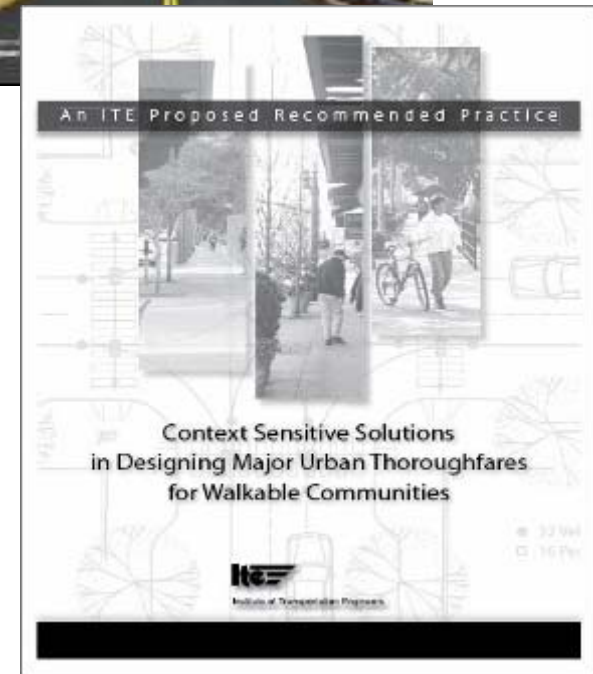
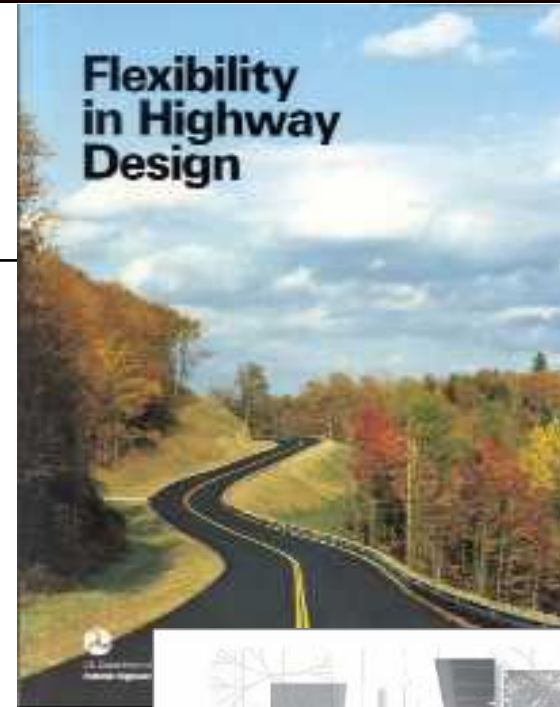
- Every project is unique.
- Uses the flexibility within the standards.
- Tailor designs to the particular situation.

FHWA - Flexibility in Highway Design

<http://www.fhwa.dot.gov/environment/flex/>

ITE - Context Sensitive Solutions in Designing Major Thoroughfares for Walkable Communities

<http://www.ite.org/bookstore/RP036.pdf>



Qualities of Excellence in Transportation Design



- The project:
 - Satisfies the purpose and needs as agreed to by a full range of stakeholders.
 - Is a safe facility both for the user and the community.
 - Is in harmony with the community, natural resources and values of the area.

Qualities of Excellence in Transportation Design



- The project:
 - Exceeds the expectations of both designers and stakeholders
 - Involves efficient and effective use of the resources (time, budget, community) of all involved parties.
 - Is designed and built with minimal disruption to the community.
 - Is seen as having added lasting value to the community.

CSS Questions or Need Information?

Try FHWA's website:

<http://www.fhwa.dot.gov/csd>

Use the CSS Clearinghouse – 1 stop location for:

- ❑ **CSS practices**
- ❑ **Current national activities**
- ❑ **Calendar of events**
- ❑ **Training resources**
- ❑ **Share best practices & ask peers questions**

<http://www.contextsensitivesolutions.org>



New FHWA Initiatives:

- Corridors of the Future: 14 Nationwide corridors to address congestion
- Public-Private Partnerships
- What can Smart Growth do to inform PPP project decisions?

Federal Programs

State & University Programs

Surface Transportation Environment & Planning (STEP) Cooperative Research Program

- Scope: environmental and planning topics of national interest
- 2007 Research Plan available

<http://www.fhwa.dot.gov/hep/step/index.htm>

AASHTO's Quick Response Research Projects

- [CEOs](#), [SCOE](#), [SCOP](#), [SCOPT](#), [SCOH](#) all have funding
- Projects intended to be accomplished in 6 -12 months
- Annual solicitation through AASHTO committee

Sources of Funding for Environmental and Planning Research

January 2007

Transportation Research Board Programs

Strategic Highway Research Program (SHRP2)

- National interest
- 4 focus areas: Safety, Renewal, Reliability, Capacity
- Capacity is the primary focus area addressing environment and planning research
- [TRB Special Report 260 summarizes program intent](#)
- Program in Development

<http://www.trb.org/shrp2/>

Corporate Advanced Research Program

- Seeks to transfer breakthrough technologies into the transportation sector
- Program in Development

<http://www.fhwa.dot.gov/crt/>

Small Business Innovation Research (SBIR) Program

- Aims to stimulate technological innovations
- Annual solicitation

<http://www.volpe.dot.gov/sbir/index.html>

State Research Programs

- Due: Timing varies by state
- Contact your state DOT research director

<http://research.transportation.org/?siteid=55&pageid=857>

Transportation Pooled Fund Program

- Requires at least two states or a state and FHWA to share a common interest and commitment to fund a research activity
- Can be initiated at any time
- Contact your state DOT research director

<http://www.tfhrc.gov/site/active.htm>

University Transportation Centers

- Focus and process vary by organization

<http://utc.dot.gov/>

National Cooperative Highway Research Program

- Problem Statements Due: September 15
- Synthesis Topics Due: February 14
- Legal Studies: early July

<http://www.trb.org/CRP/NCHRP/NCHRP.asp>

Airport Cooperative Research Program

- Problem Statements Due: April 15
- Synthesis Topics Due: October 12

<http://www.trb.org/CRP/ACRP/ACRP.asp>

Innovations Deserving Exploratory Analysis

- Transfers technologies to transportation uses. 4 focus areas: High-Speed Rail; Transit; Safety; NCHRP Highway
- Annual solicitation

<http://www.trb.org/Studies/Programs/IDEA.asp>

Commercial Truck and Bus Safety Synthesis Program (CTBSSP)

- Topics Due: May 31

<http://www.trb.org/CRP/CTBSSP/CTBSSP.asp>

Transit Cooperative Research Program

- Problem Statements Due: June 15
- Synthesis Topics Due: March 31
- Legal studies: February 15

<http://www.trb.org/CRP/TCRP/TCRP.asp>

National Freight Cooperative Research Program

- Problem statements can be submitted at anytime by anyone.

<http://www.trb.org/CRP/NCFRP/NCFRP.asp>

Hazardous Materials Cooperative Research Program

- Conducts the work of [TRB Spec Rpt 283](#)
- <http://www.trb.org/CRP/HMCRP/HMCRP.asp>

This includes only research funding available through transportation research programs. Additional research funding is available for environmental and planning topics from other government, academic, and private sources.

New Resources:

- AASHTO Center for Environmental Excellence:
 - Practitioner's Handbook – Utilizing Community Advisory Committees for NEPA Studies,
<http://environment.transportation.org/>
- NCHRP Project 25-25(20)
 - The Role of State DOTs in Support of Transit-Oriented Development (TOD)

May 3-4, 2006

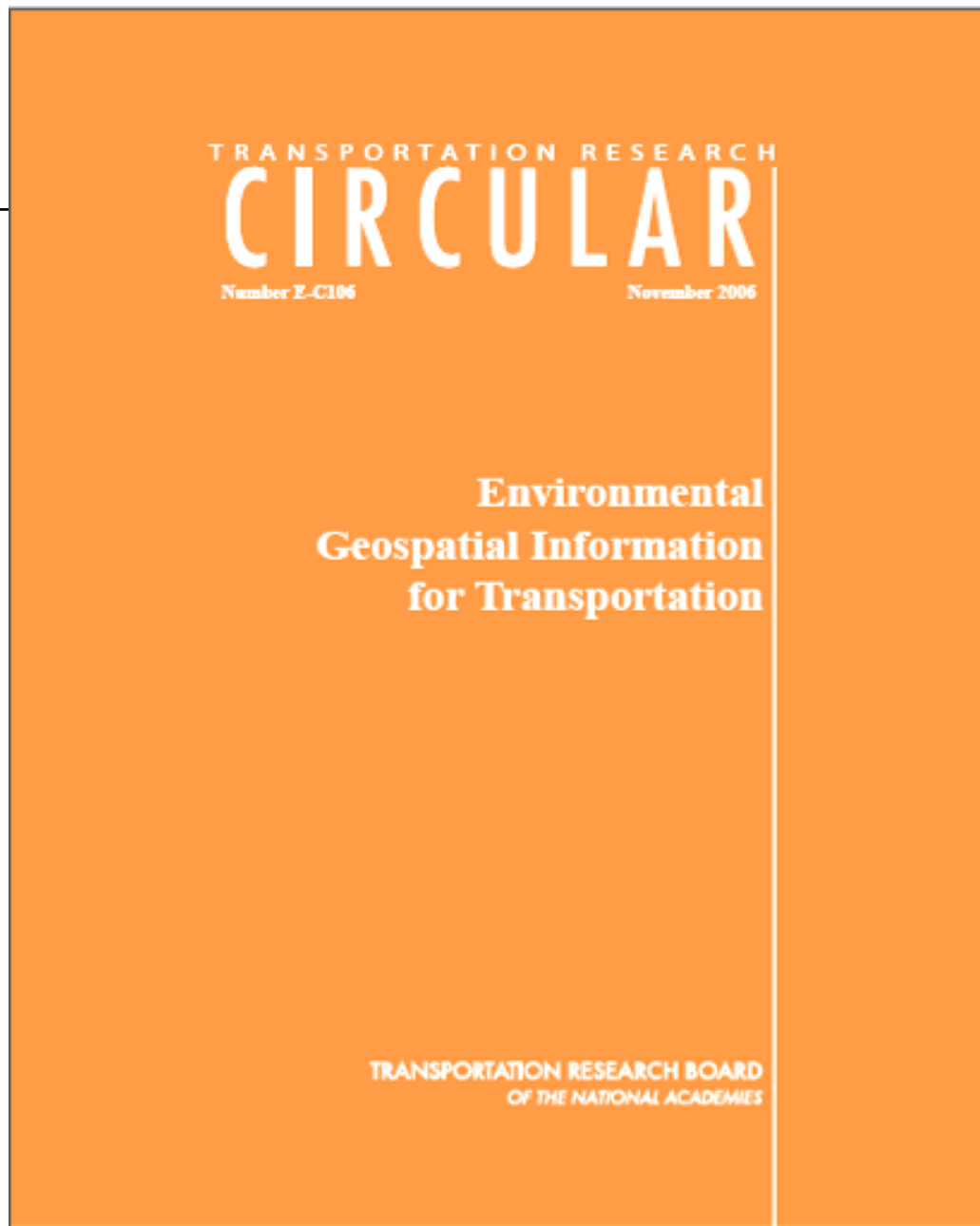
Sponsored by Federal
Highway Administration and
the Transportation Research
Board

84 Attendees

- State & Federal
Transportation Agencies
- Resource Agencies
- MPOs
- Non-profit organizations
- Other agencies

Preceded by

*Environmental Spatial Information
for Transportation: A Peer
Exchange on Partnerships. 2003*





For More Information

Shari Schaftlein

Team Leader

Policy & Program Development

FHWA, Office of Project Development &
Environmental Review

Shari.Schaftlein@dot.gov

202-366-5570