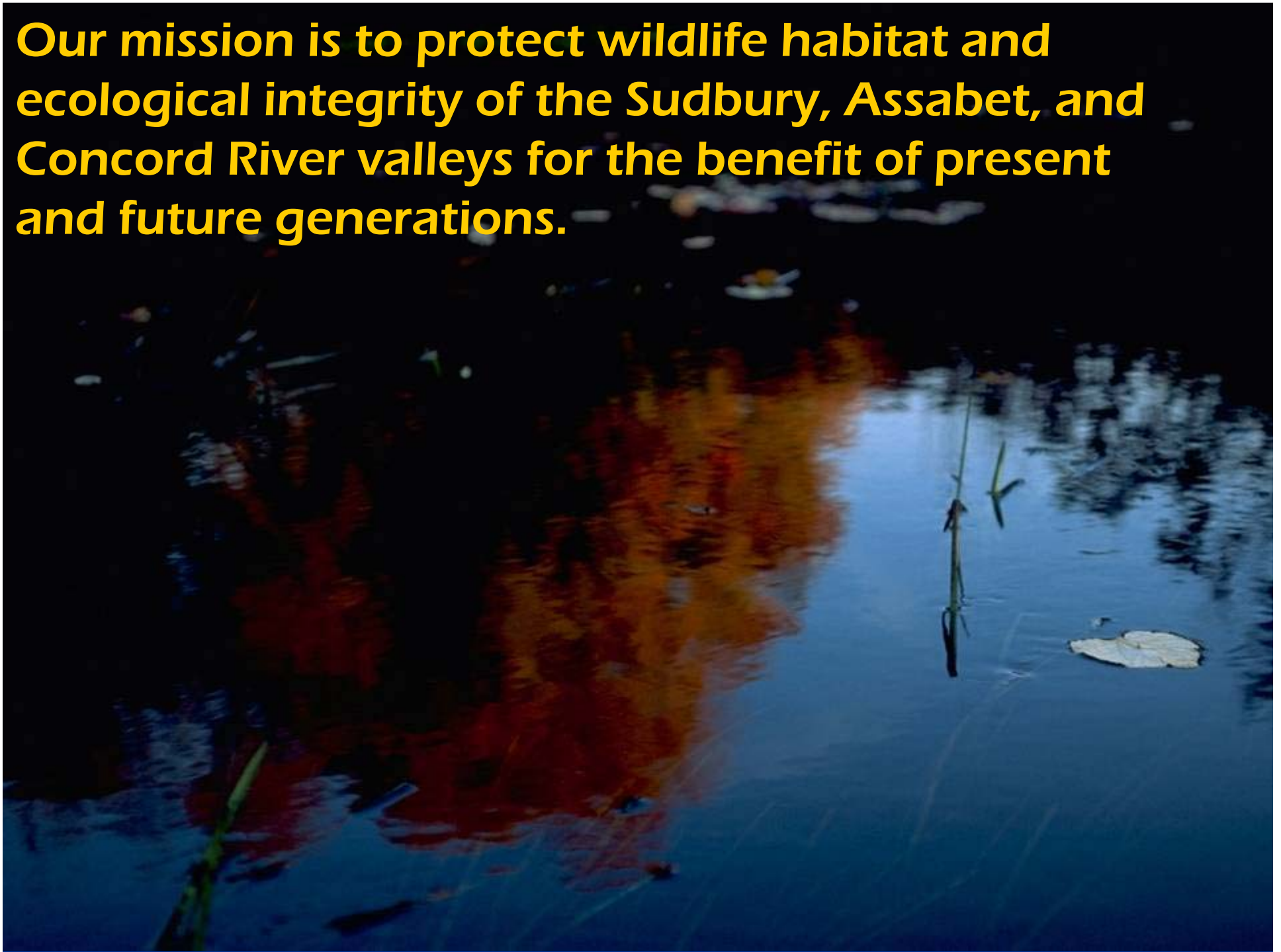


# Planning for Biodiversity Conservation in the Sudbury River Valley

*Sudbury Valley Trustees*  
*April 2007*

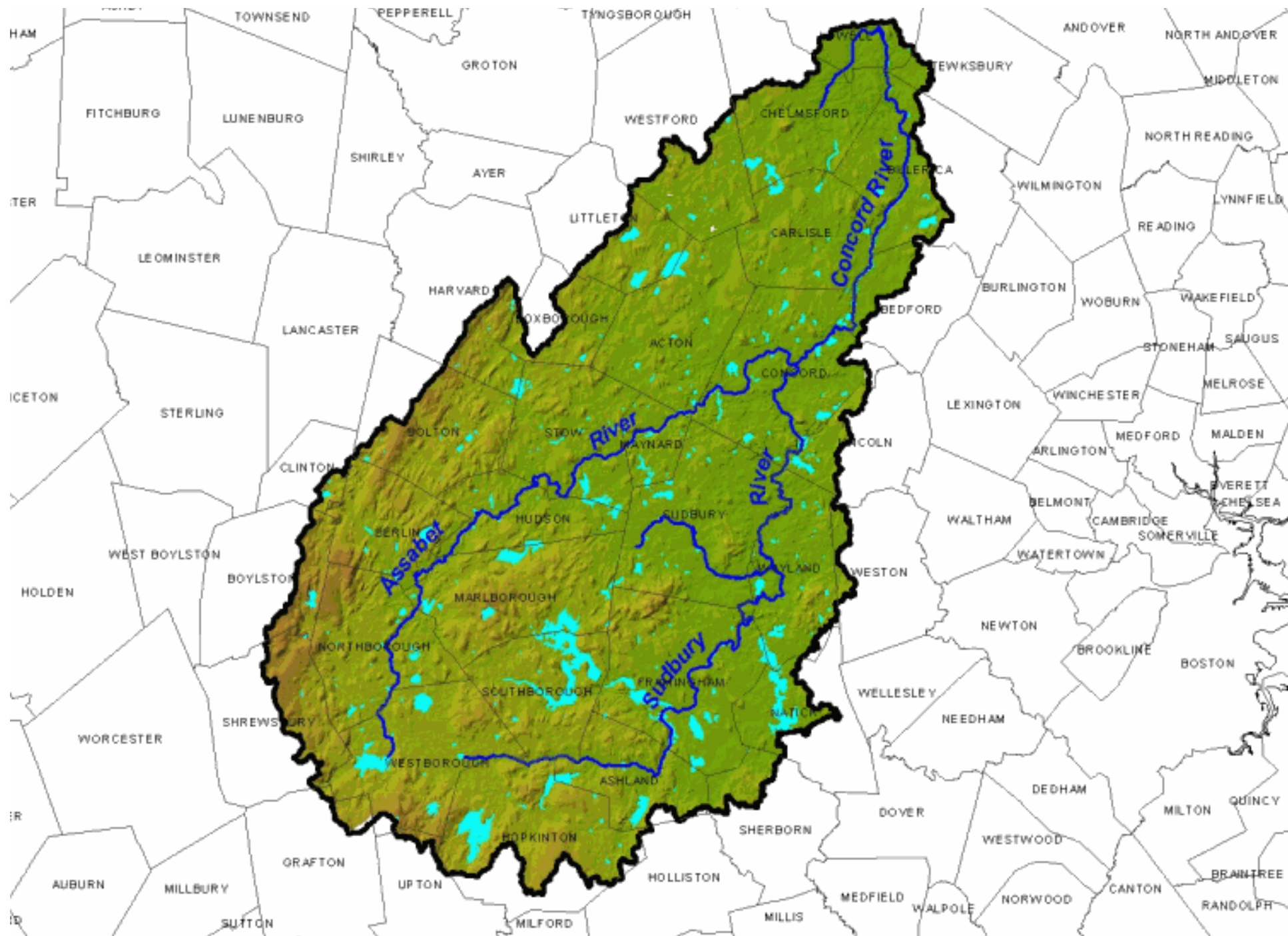


**Our mission is to protect wildlife habitat and ecological integrity of the Sudbury, Assabet, and Concord River valleys for the benefit of present and future generations.**



# About SVT

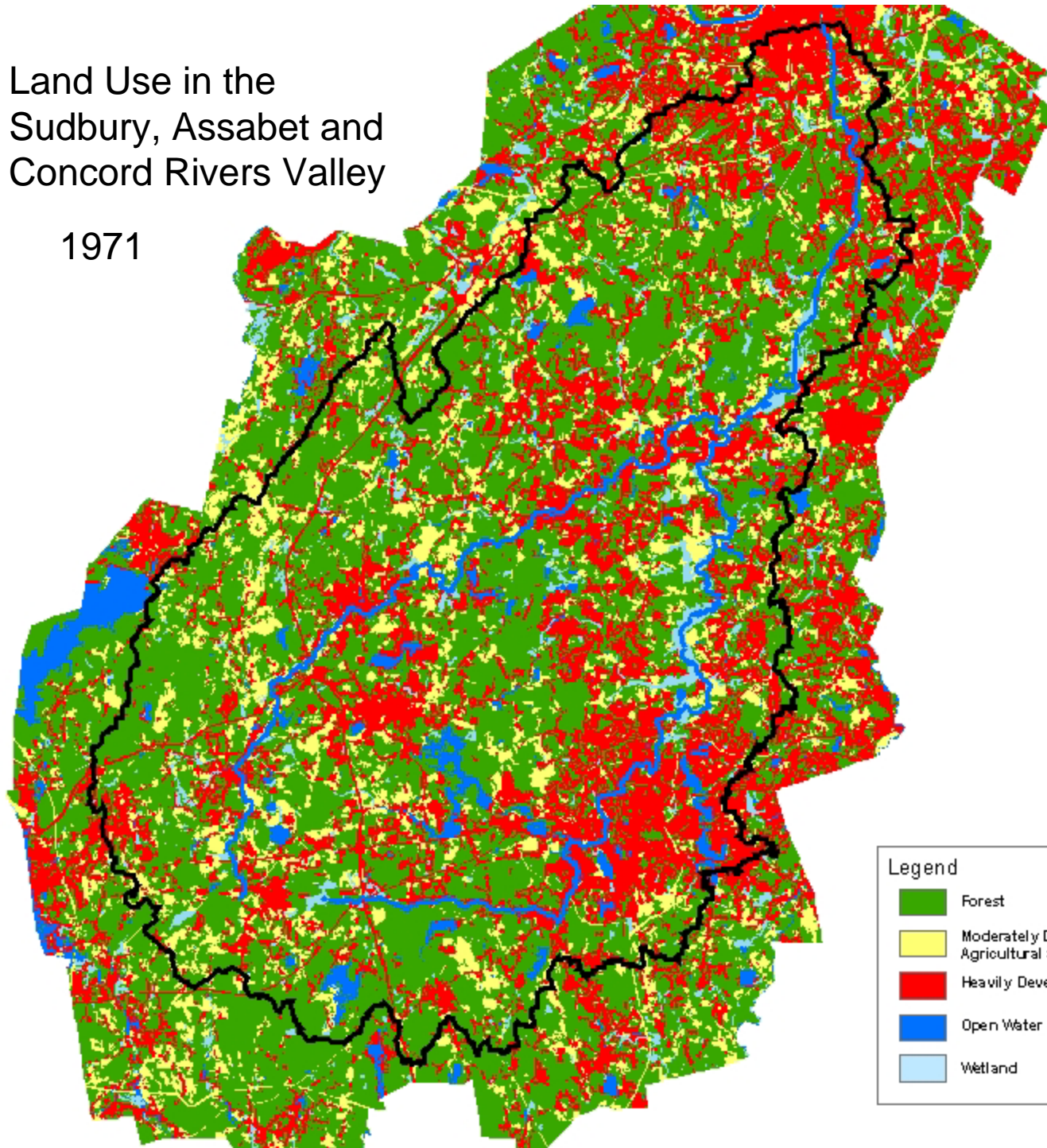
- Eight full-time and two part-time staff
  - Two land protection staff
  - Two stewardship staff
- 3,500 members (households)
- Interests in land:
  - 2,000 acres owned in fee as reservations
  - 1,000 acres of conservation easements





Land Use in the  
Sudbury, Assabet and  
Concord Rivers Valley

1971

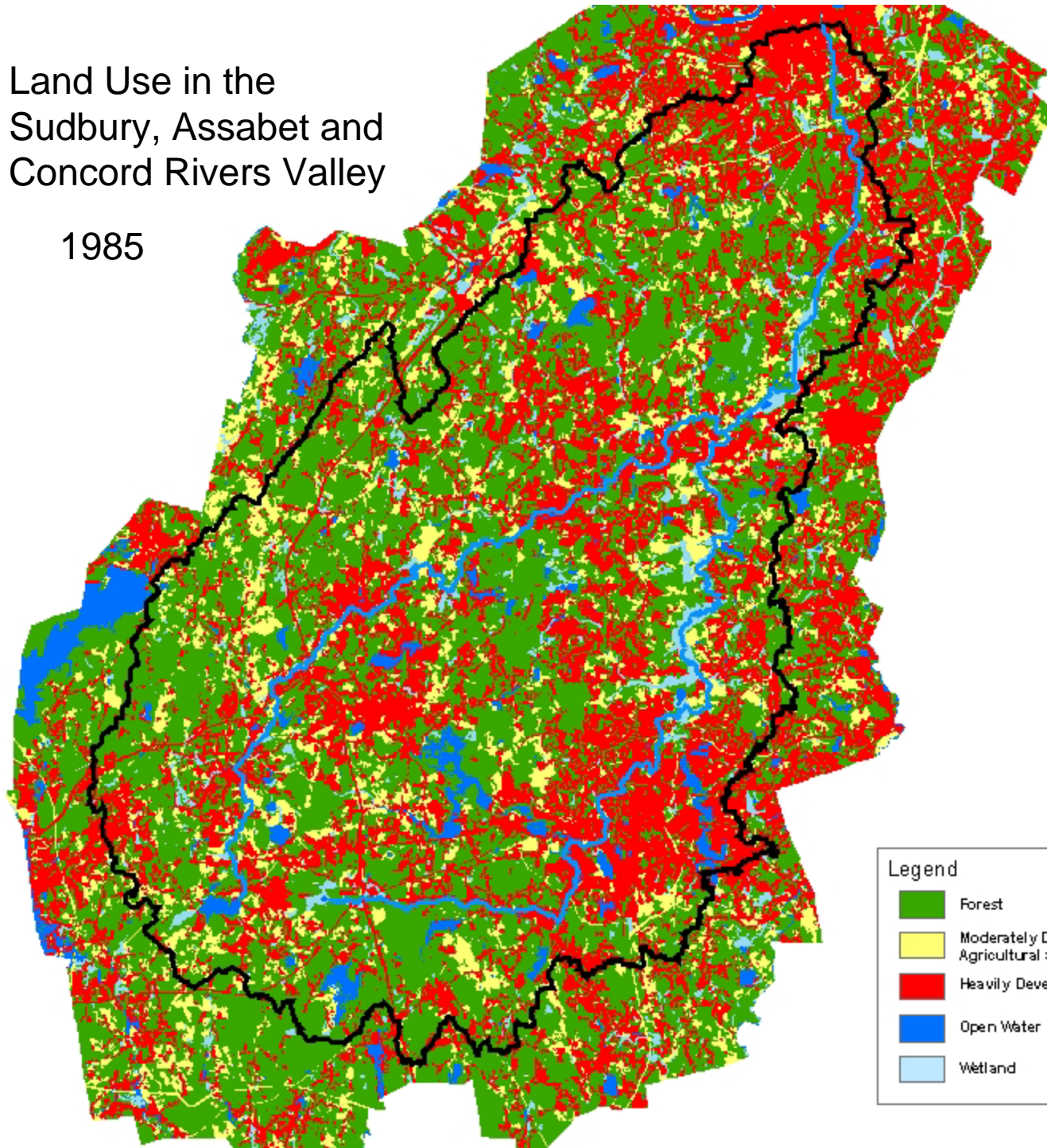


Legend

- Forest
- Moderately Developed  
Agricultural and Open Land
- Heavily Developed
- Open Water
- Wetland

Land Use in the  
Sudbury, Assabet and  
Concord Rivers Valley

1985

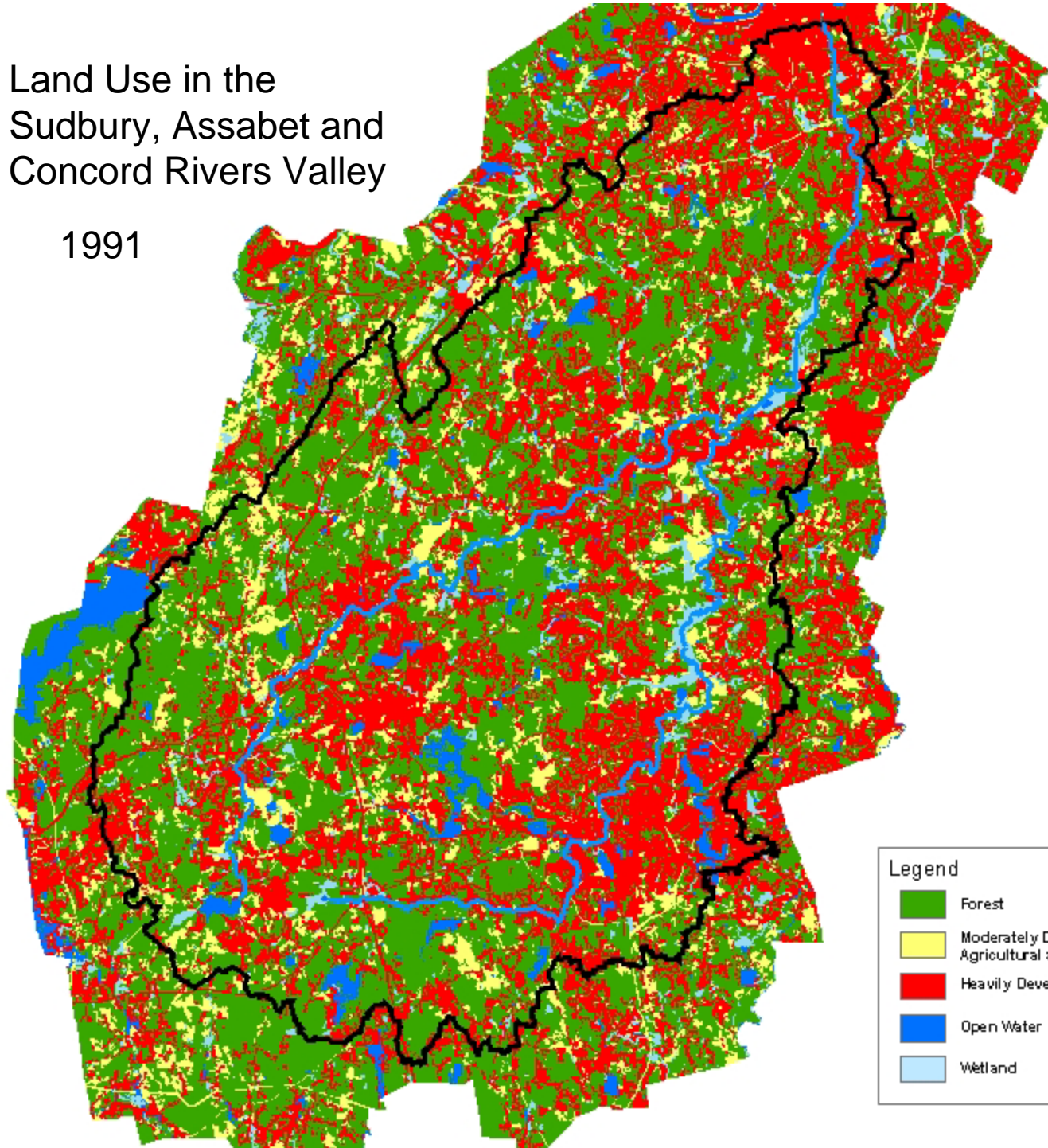


Legend

- Forest
- Moderately Developed  
Agricultural and Open Land
- Heavily Developed
- Open Water
- Wetland

Land Use in the  
Sudbury, Assabet and  
Concord Rivers Valley

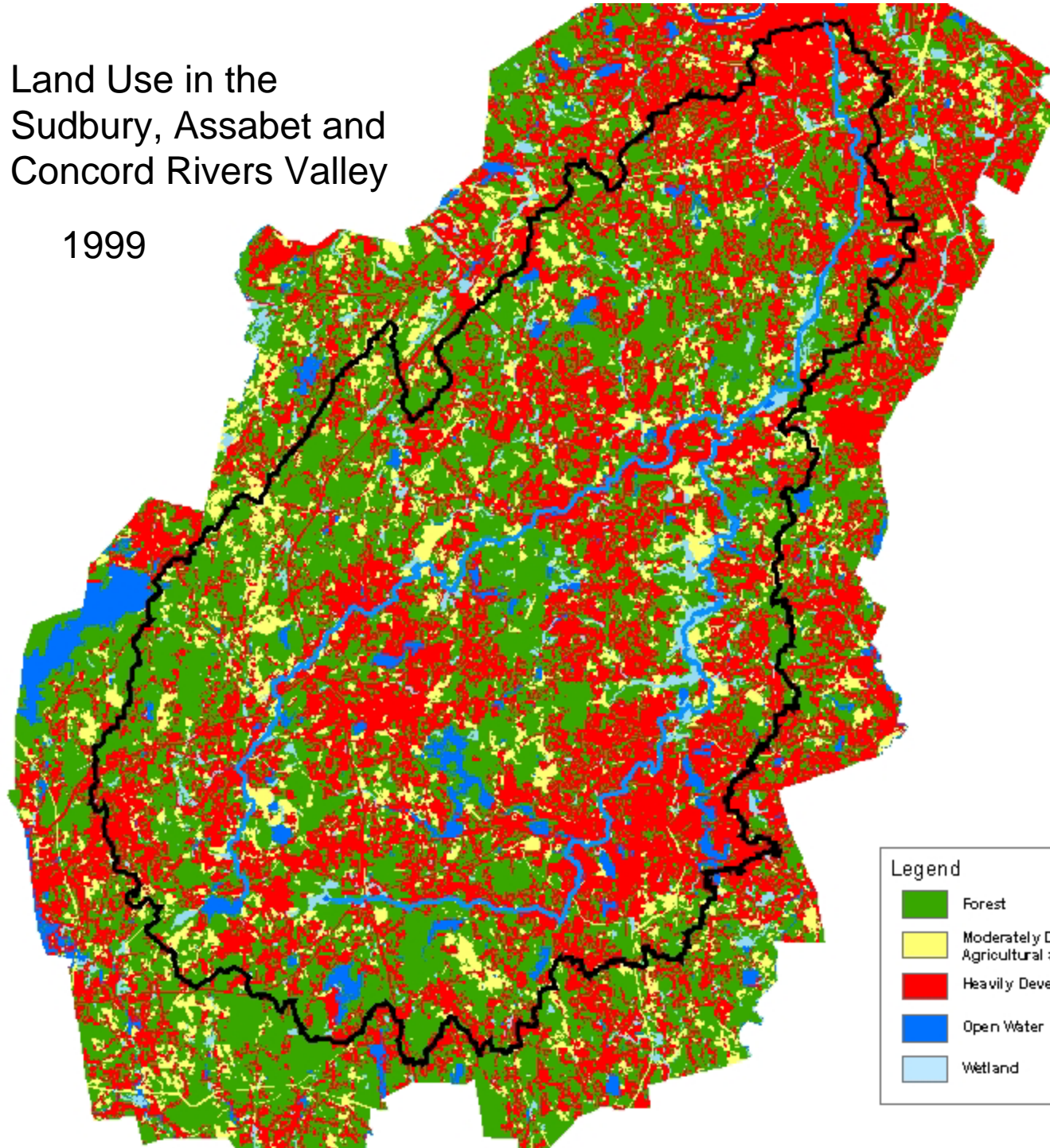
1991





Land Use in the  
Sudbury, Assabet and  
Concord Rivers Valley

1999



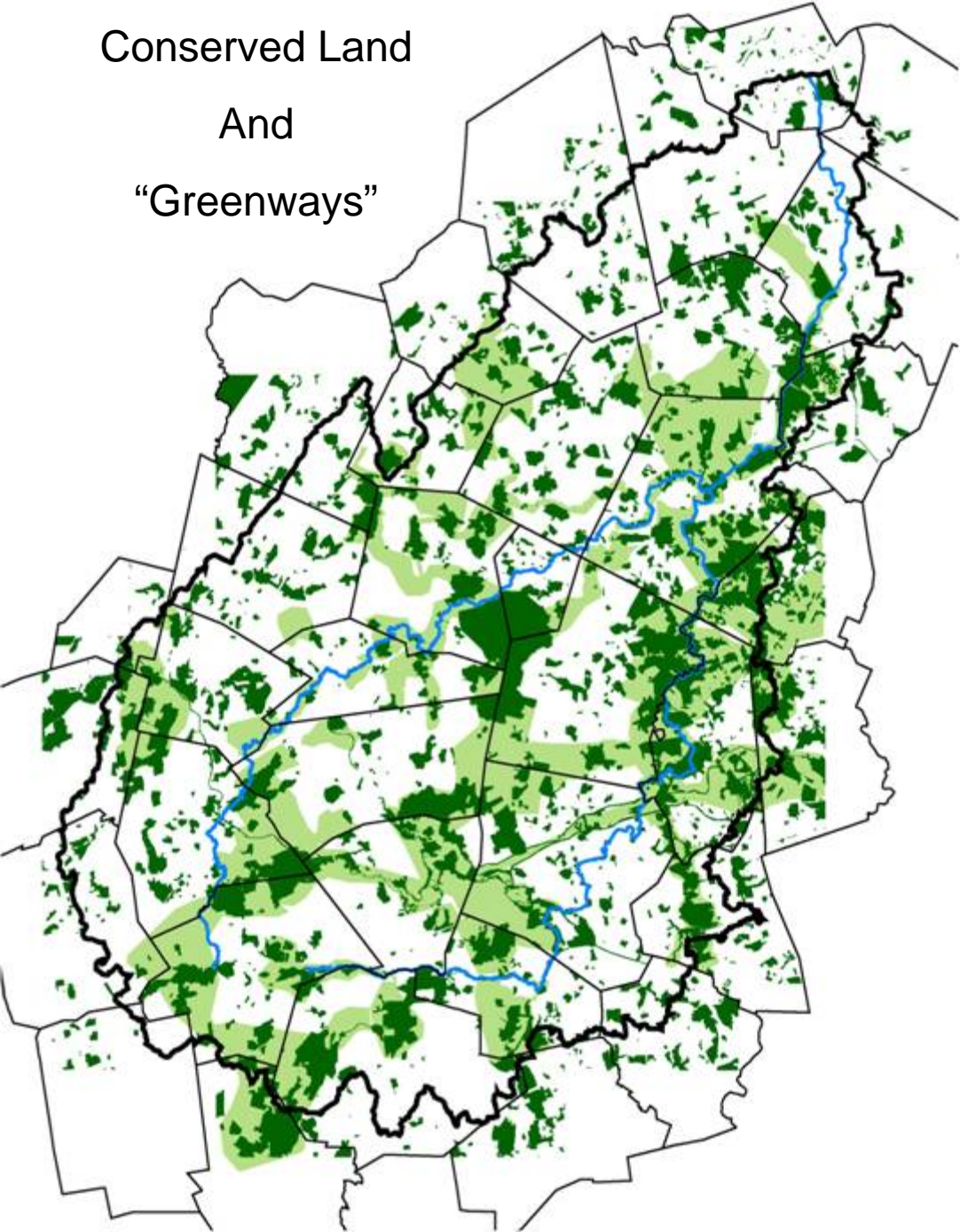
Legend

- Forest
- Moderately Developed  
Agricultural and Open Land
- Heavily Developed
- Open Water
- Wetland

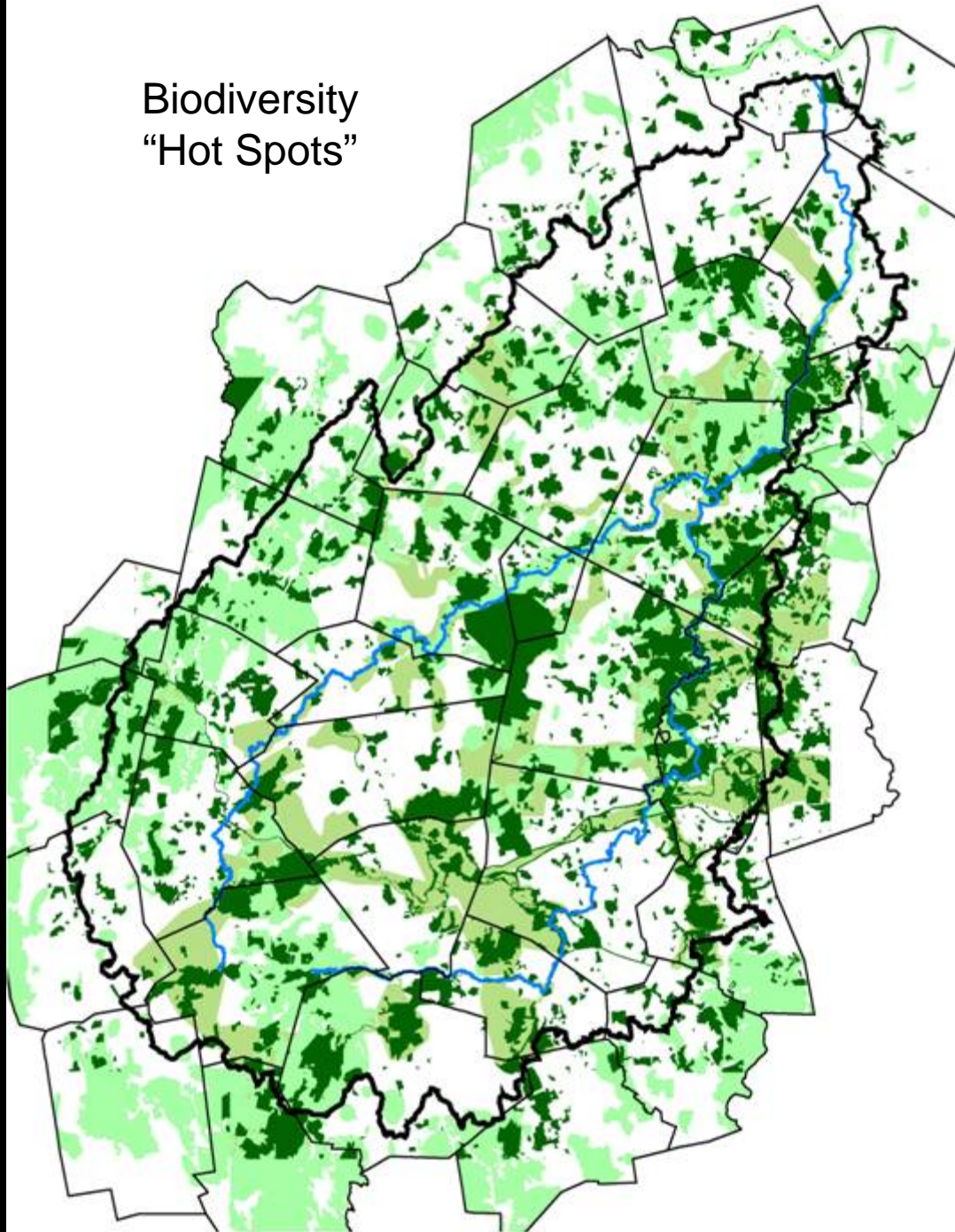
# Strategic Planning for Land Protection

- 1,500 acres over 5 years (300 ac./yr.)
- 80% of acres “regionally significant”
  - Priority Areas
  - Flagship Properties
- 20% staff time dedicated to priority project cultivation in “Priority Areas”

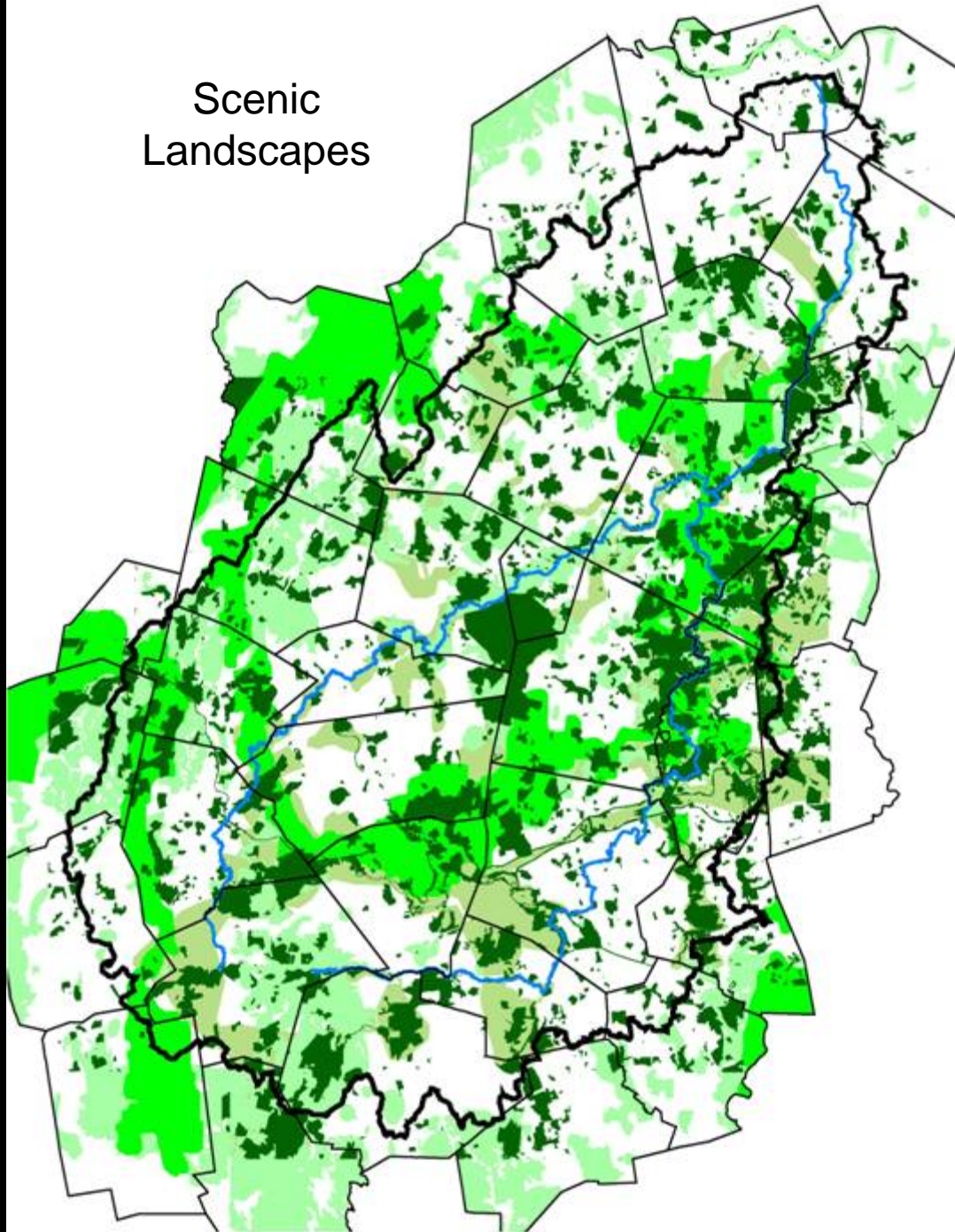
Conserved Land  
And  
“Greenways”



Biodiversity  
"Hot Spots"

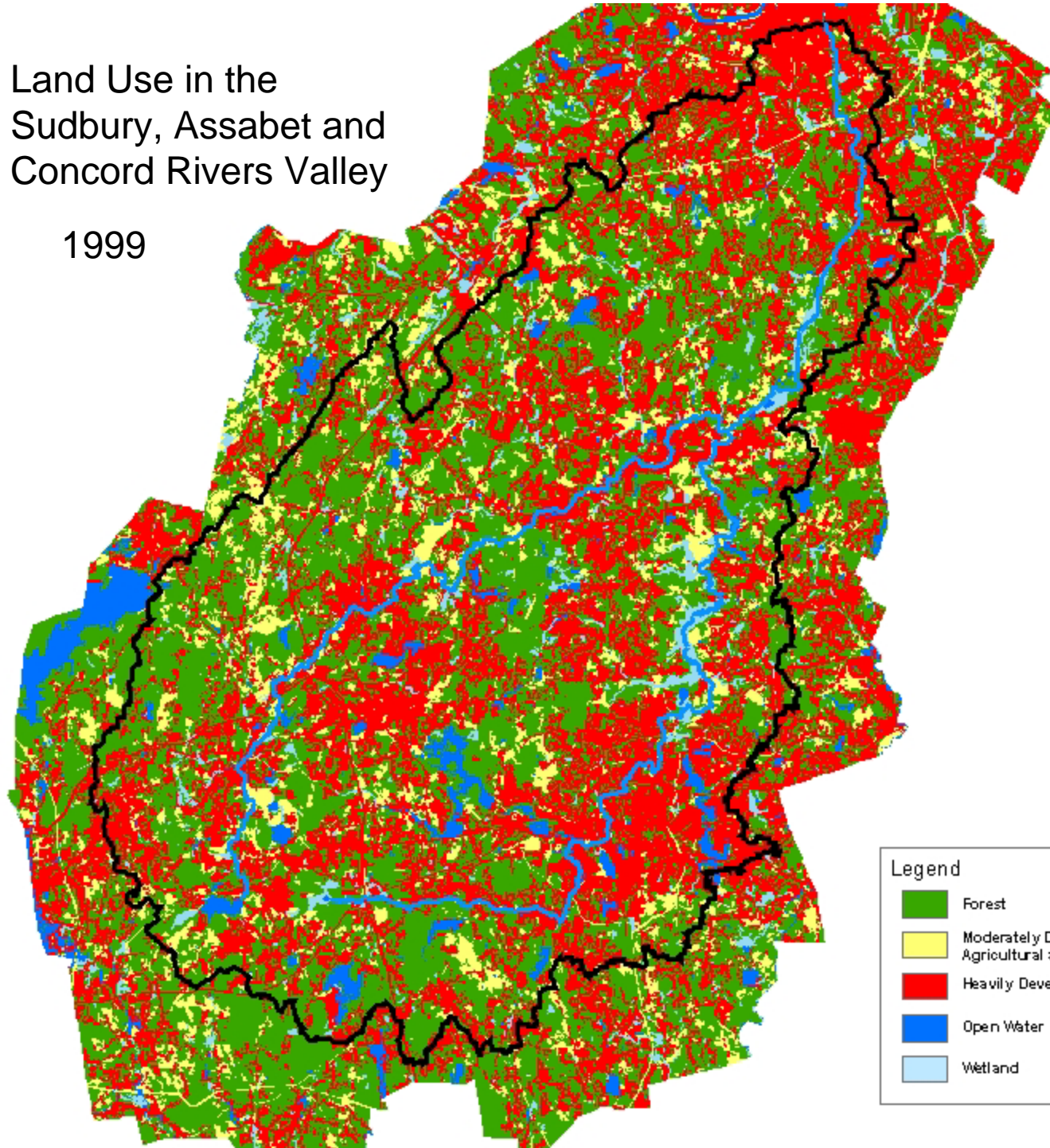


Scenic  
Landscapes



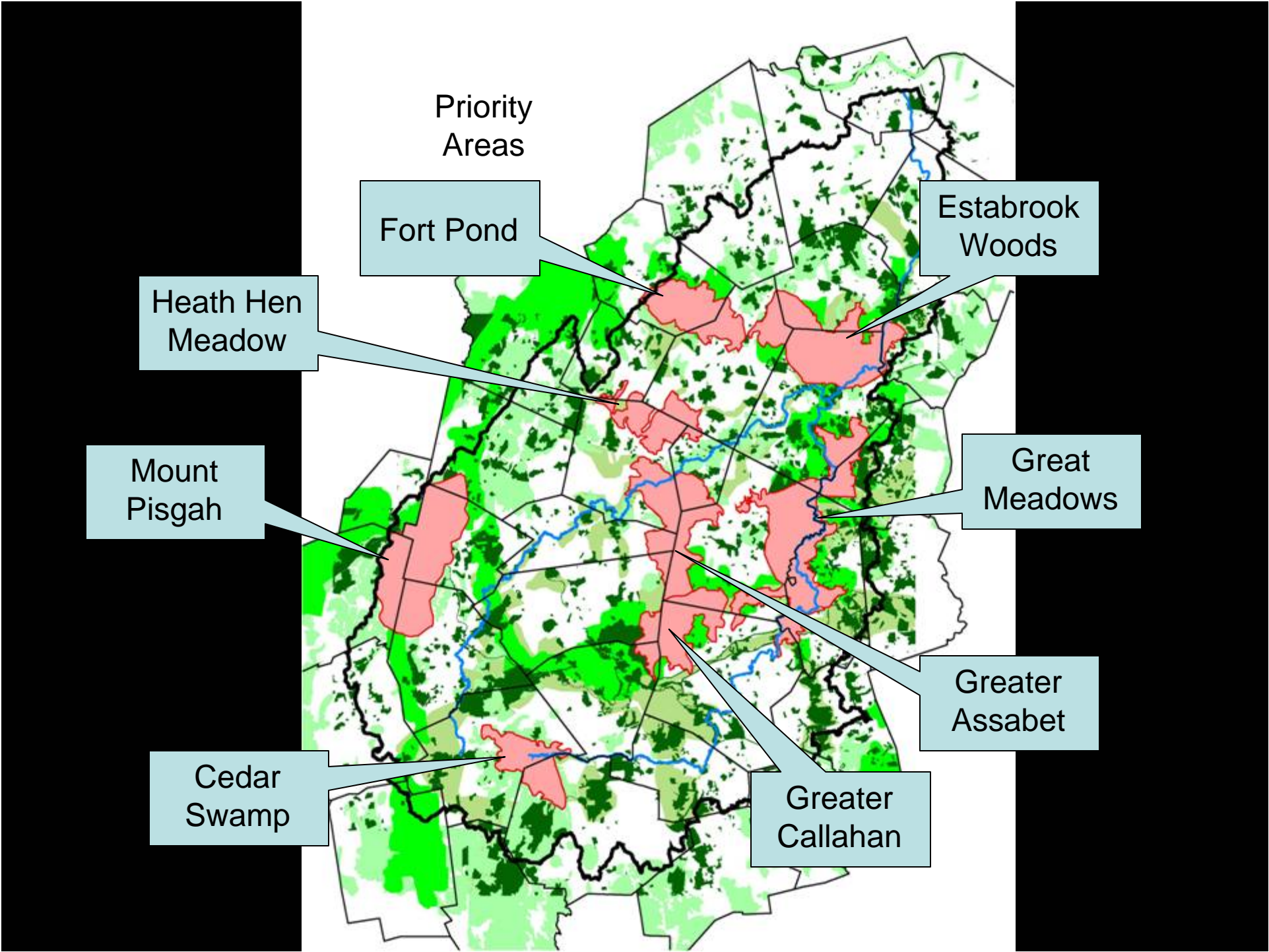
Land Use in the  
Sudbury, Assabet and  
Concord Rivers Valley

1999



Legend

- Forest
- Moderately Developed  
Agricultural and Open Land
- Heavily Developed
- Open Water
- Wetland



Priority Areas

Fort Pond

Estabrook Woods

Heath Hen Meadow

Great Meadows

Mount Pisgah

Greater Assabet

Cedar Swamp

Greater Callahan

# Priority Area Analysis

- Located in parts of 19 out the 36 municipalities in our watershed.
- Contain 45,105 acres out of watershed's 256,000 total acres (17.6%).
- Range in size from 3,000 to nearly 10,000 acres with a base of 20% to as much as 50% already conserved.
- Other priorities include “Flagship” properties – large, signature properties of significant regional importance.



# Planning Land Stewardship for Biodiversity Protection

- Knowing the properties:
  - Awareness of all properties with NHESP Priority or Estimated habitat
  - Biological inventories done on most significant properties
- Managing the properties:
  - 20 or so largest reservations have complete management plans
  - Smaller reservations have “reservation data summary sheets”
  - Enhancing habitat on reservations.

# Wolbach Farm, Sudbury

## Wolbach Farm Invasive Exotic Plants



**Key to Exotics:**  
EBT-European Buckthorn  
GBT-Glossy Buckthorn  
GM - Garlic Mustard  
JB - Japanese Barberry  
JH - Japanese Honeysuckle  
MH - Morrow's Honeysuckle  
MR - Multiflora Rose  
NM - Norway Maple  
OB- Oriental Bittersweet  
PLS - Purple Loosestrife  
WE - Winged Euonymous

- Exotics
- Rock Outcrops
- - - Drainage
- ▭ Wolbach Wet Meadow
- ▭ Seepage Swamp
- ▭ Wolbach Forest
- ▭ Wolbach Fields
- ▭ Property line



0.1 0 0.1 0.2 0.3 0.4 Miles

Map by Frances Clark 12/8/03; property boundaries and edges of communities and location of exotics estimated. Based on MASS GIS data of 2002

# Turenne Reservation, Southborough

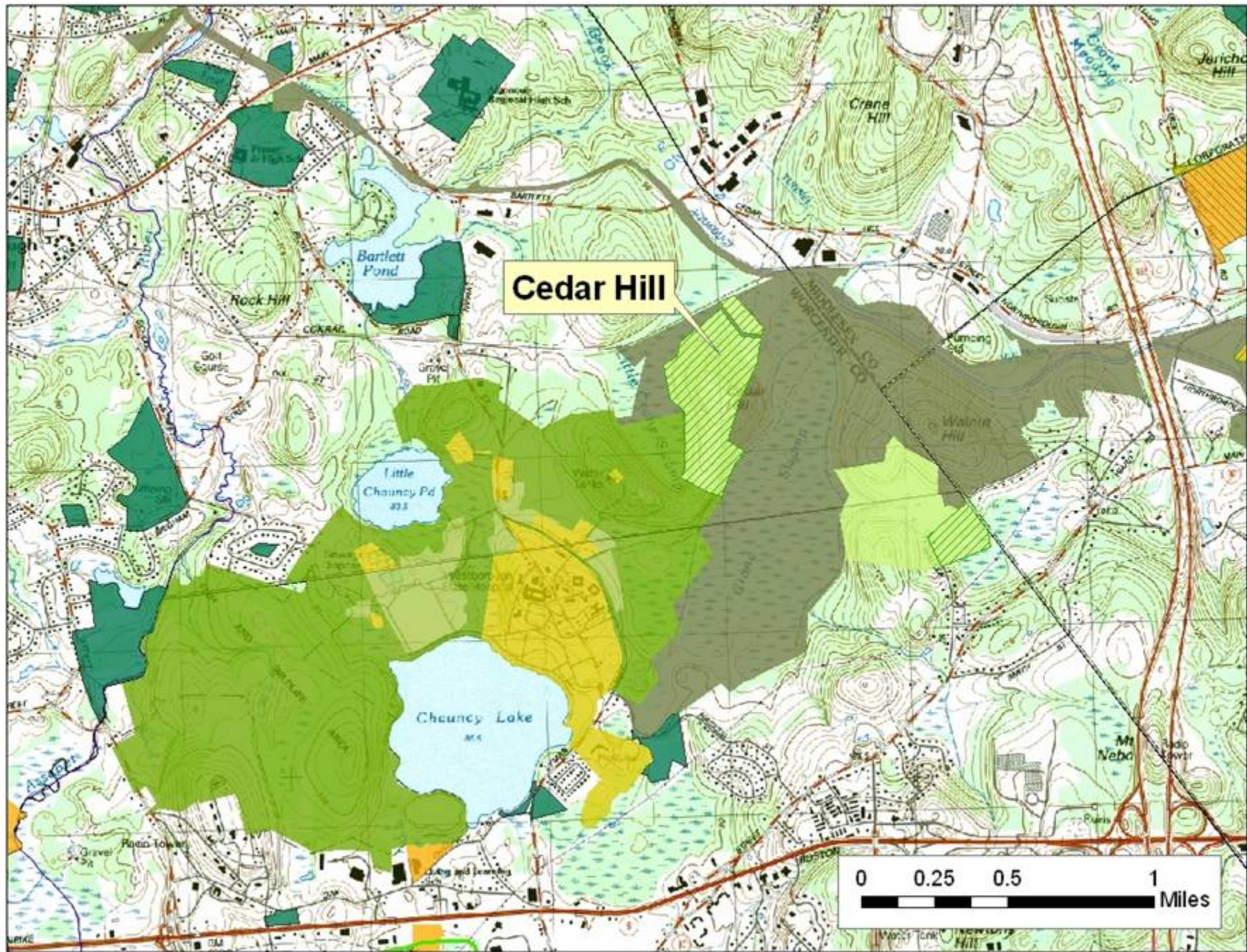


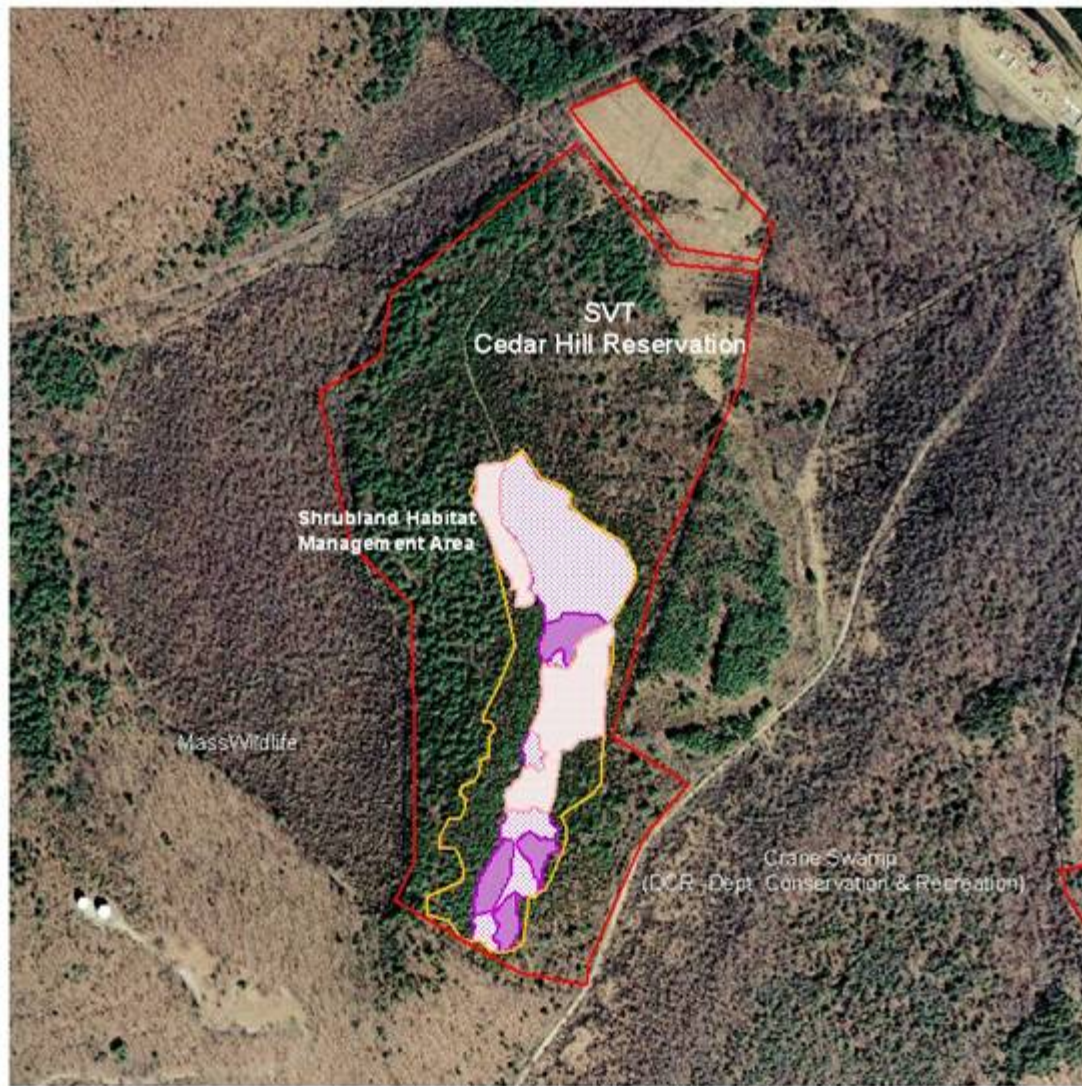
# Greenways, Wayland



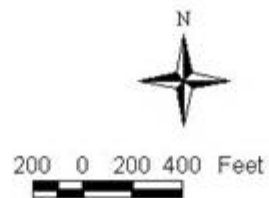
# Fay Fields, Sudbury







**Cedar Hill Shrubland Management**



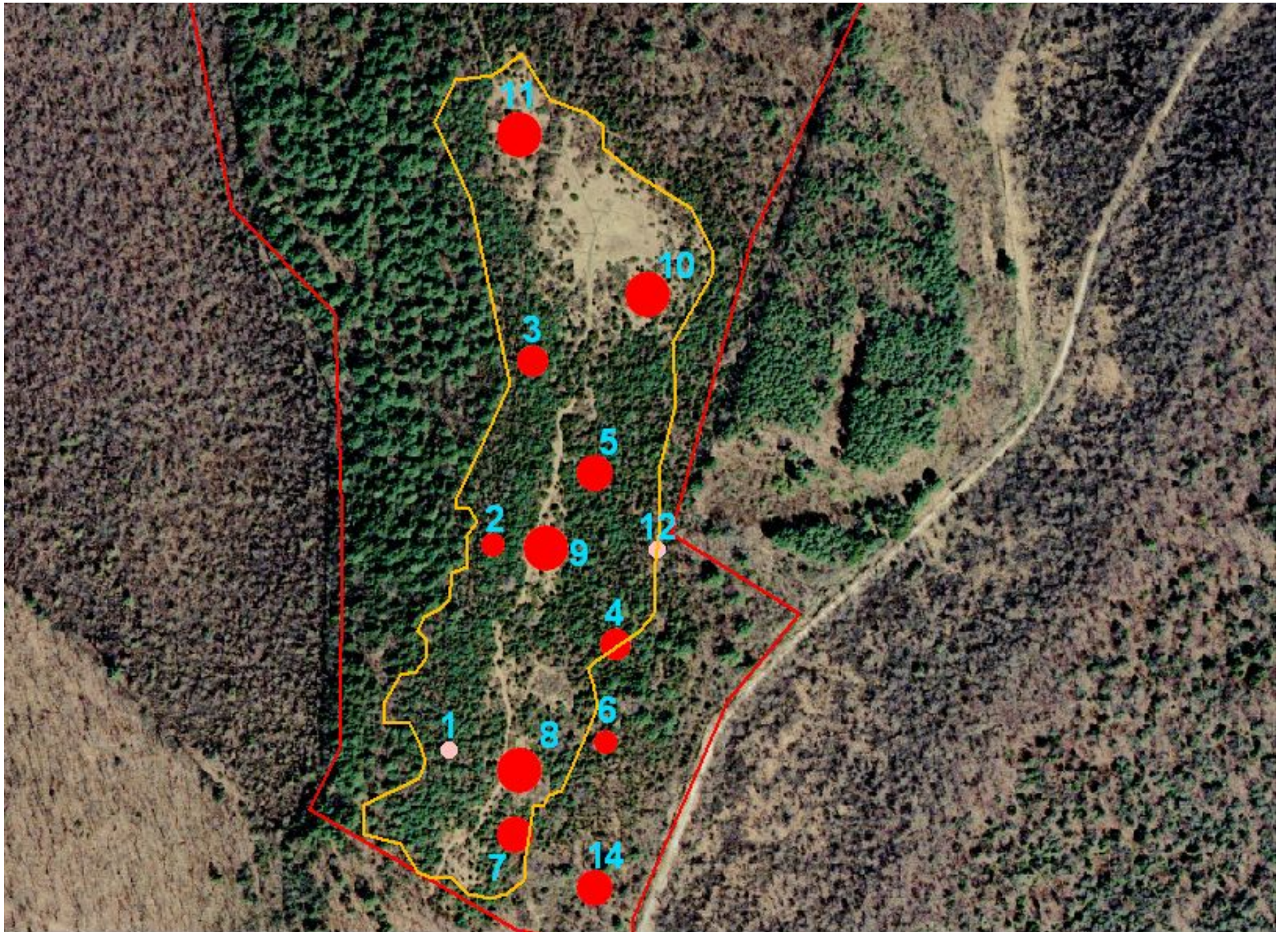
















Photo by C.S. Robbins

Golden-winged warbler

# Planning tools and resources

- Sudbury Assabet Concord River Basin Study (SuAsCo River Basin Group of the League of Women Voters, 1968)
- Massachusetts Land Inventory (Ma. Dept. of Environmental Management, 1982)
- Greenways Plan for the Suasco Watershed (Sudbury Valley Trustees, 2000)
- SuAsCo (Sudbury, Assabet, and Concord River Watershed) Biodiversity Protection and Stewardship Plan (Clark, 2000)

## Planning tools and resources, *cont'd.*

- Biomap: Guiding Land Conservation for Biodiversity in Massachusetts (Mass. NHESP, 2001)
- Living Waters: (Mass. NHESP, 2003)
- Massachusetts State Wildlife Plan (Mass. Dept. of Fisheries and Wildlife, 2005)
- Mass GIS



