

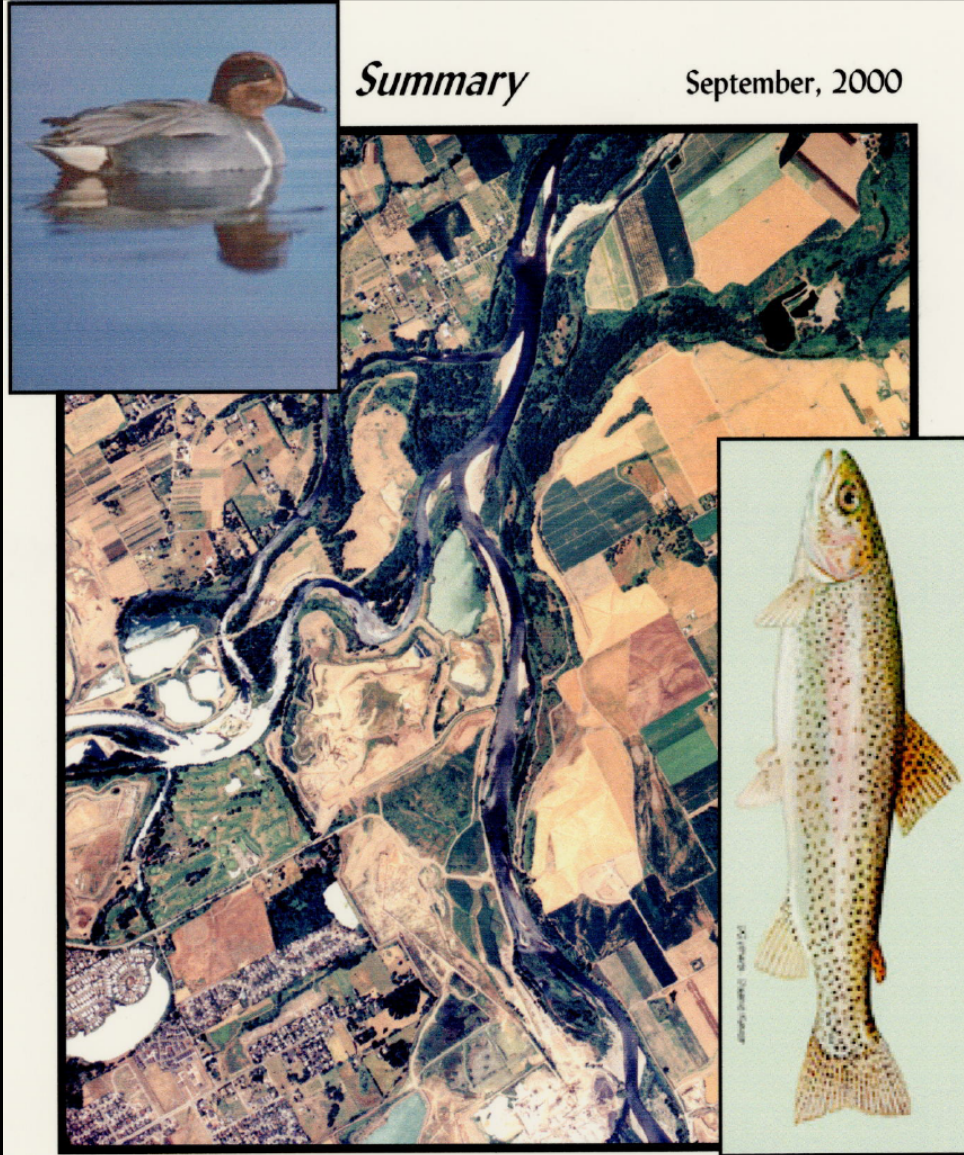


MCKENZIE RIVER TRUST



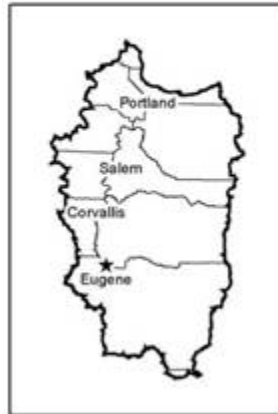
*Protecting
Special Lands*

Biological Evaluation of the Willamette River and McKenzie River Confluence Area



The Green Island Project

GREEN ISLAND PROJECT AREA



The Green Island Project

Historic Conditions

1936



1951



1979



1990



The Green Island Project

Habitat Characteristics

- Over 4 ½ miles of the old McKenzie River channel and 4 miles of mainstem Willamette
- Over 22 miles of riparian area
- Eight different islands or point bars
- 11 different side channels and crescent lakes on the property
- Established cottonwood gallery forests



The Green Island Project

Species that will benefit

- Spring Chinook salmon
- Bull trout
- Western pond turtle
- Red-legged frog
- 142 bird species: 75 nesting, 42 avian species of concern
- Potential reintroduction site for Oregon chub

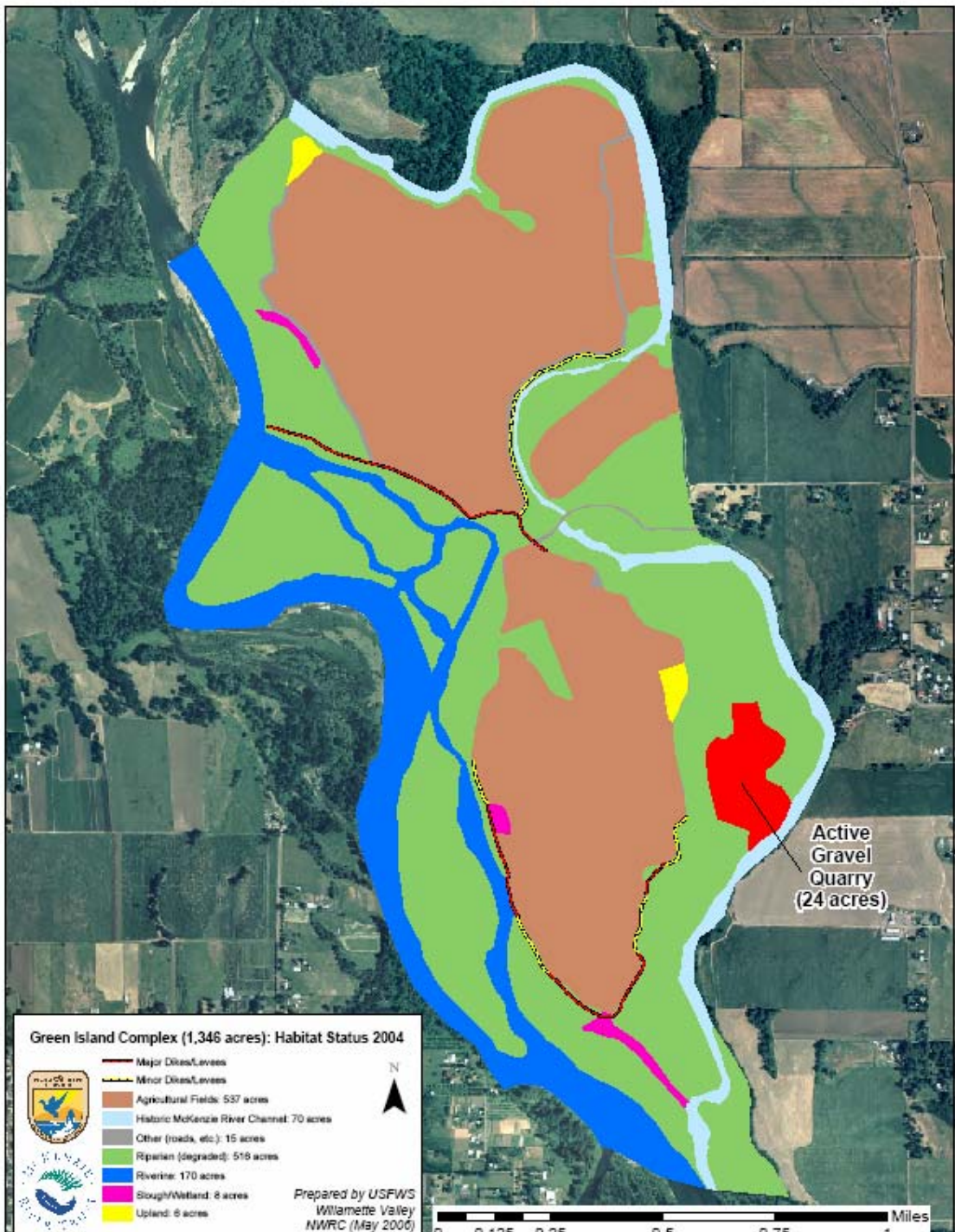


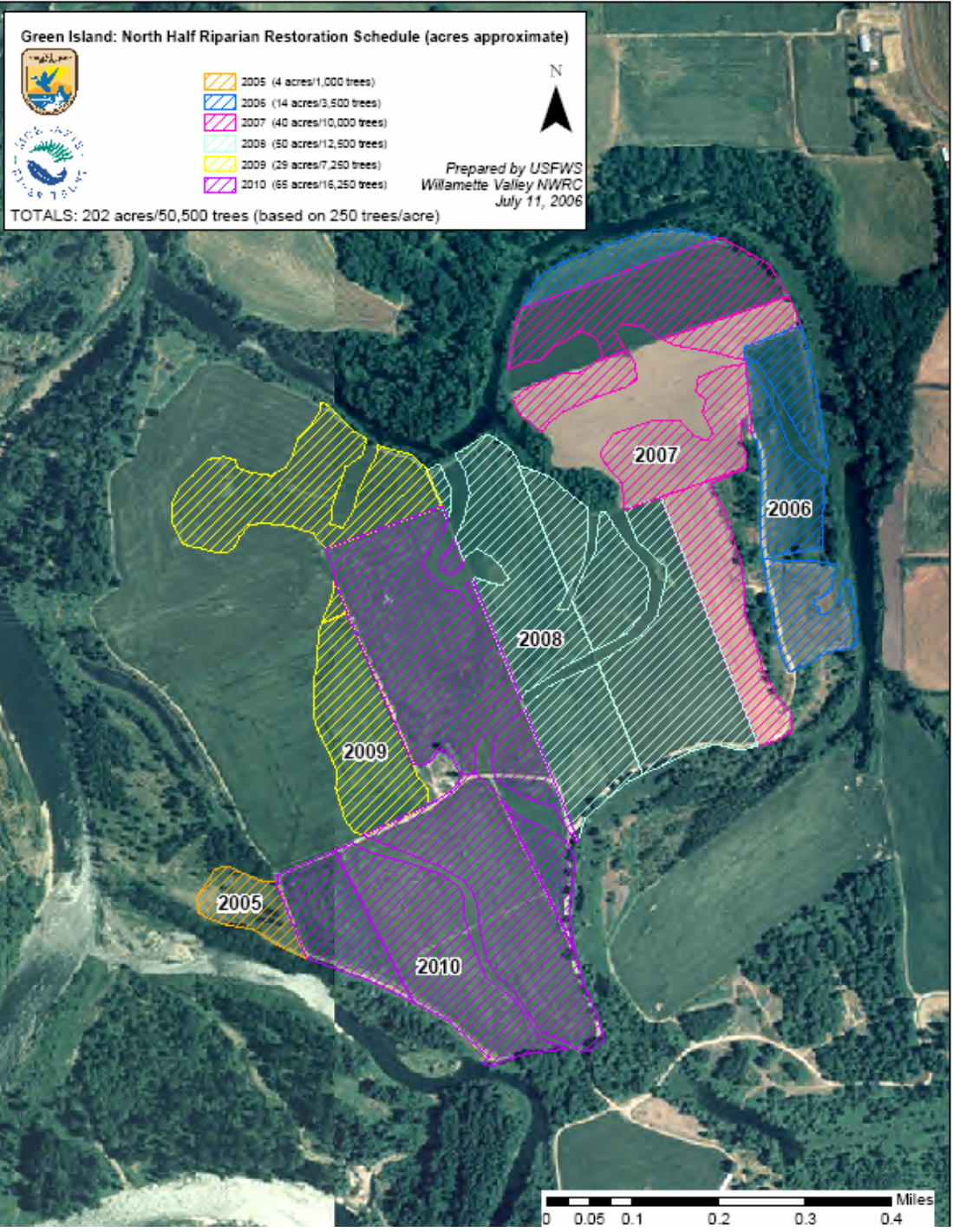
The Green Island Project

Restoration efforts

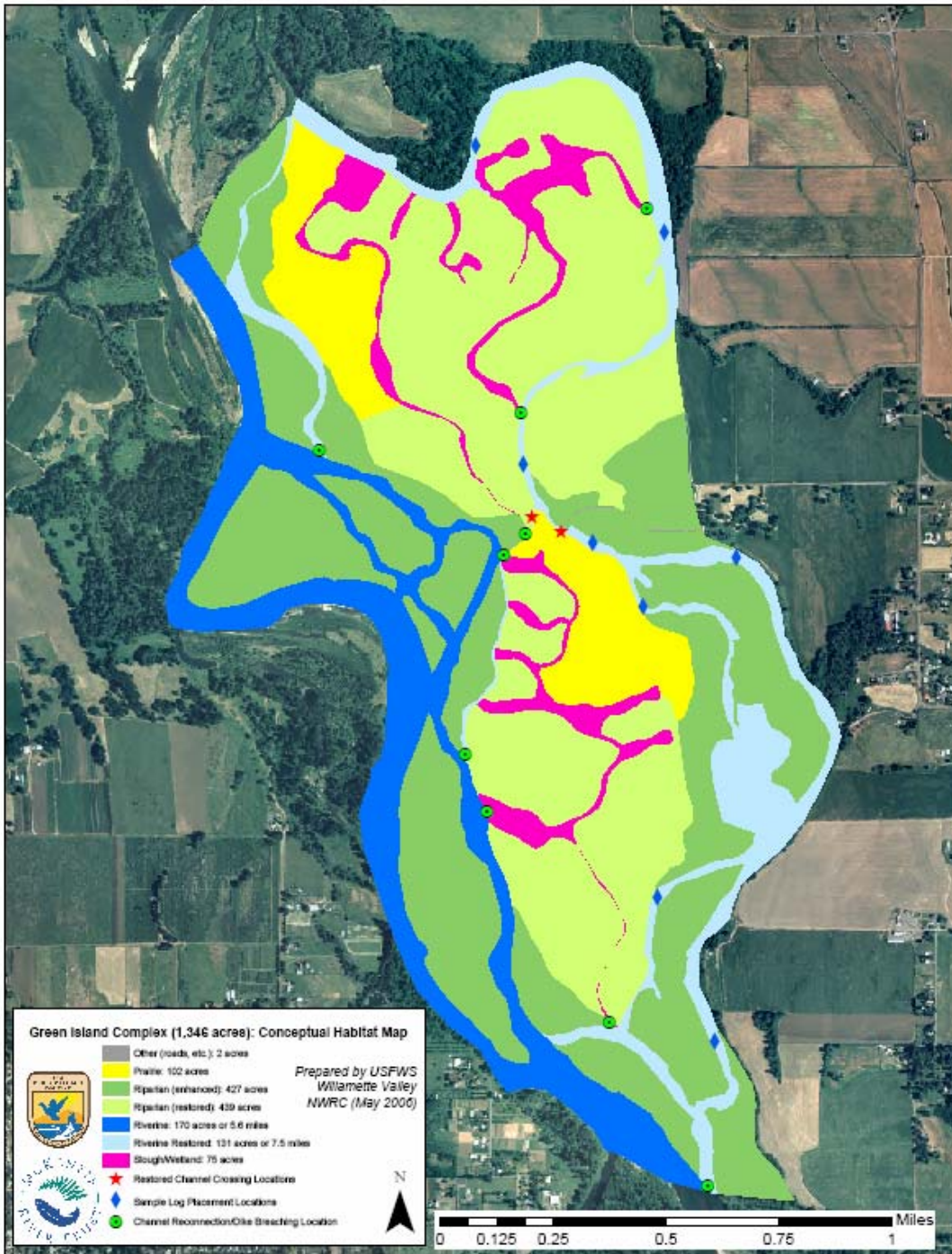
- Restore converted farmlands to forests, grasslands, wetlands
- Reestablish hydrologic connections
- Assess opportunities for similar landscape-scale projects up and downstream







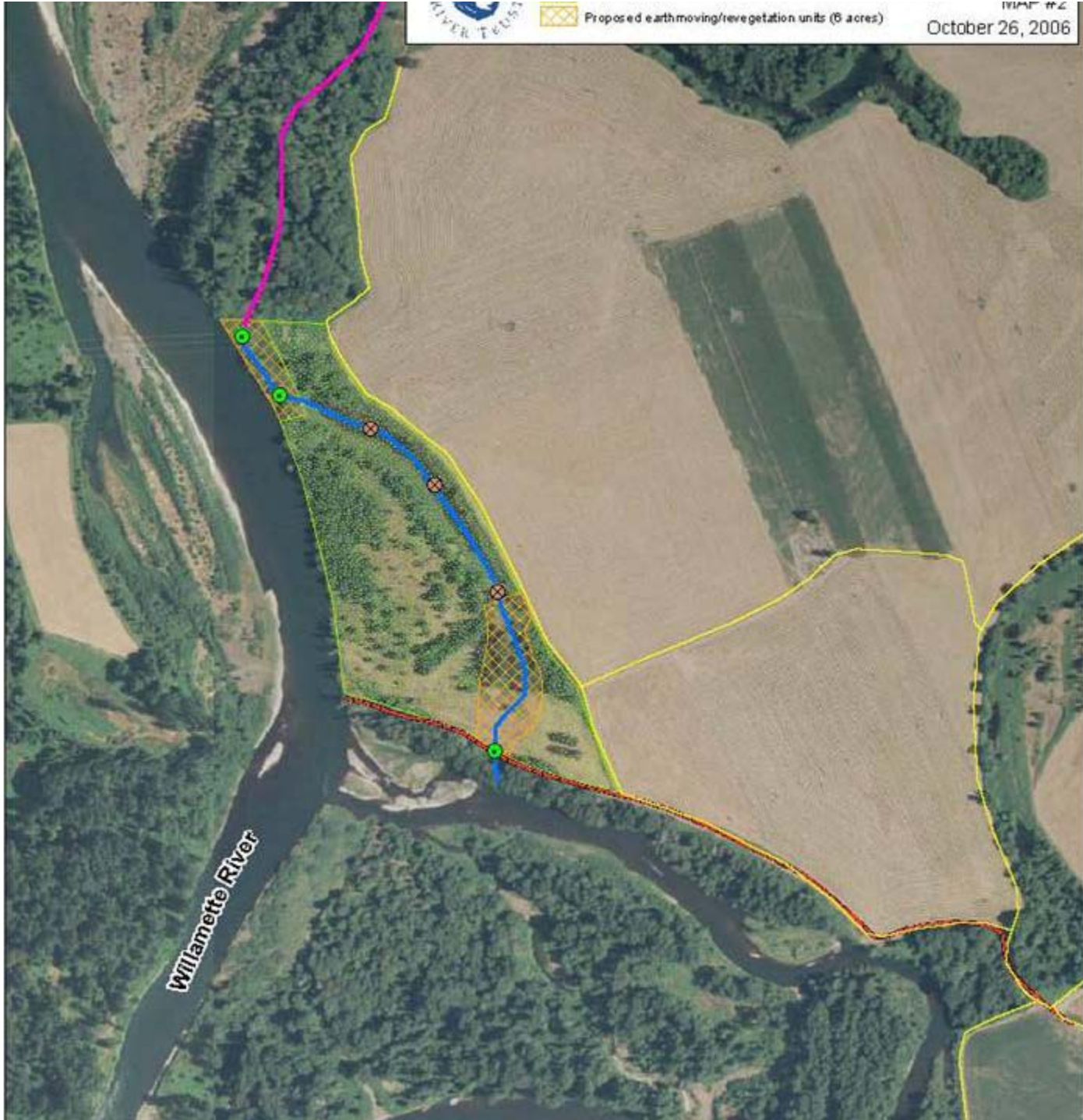






Proposed earthmoving/revegetation units (6 acres)

IVMP #2
October 26, 2006



Willamette River





*Target the best for conservation
before it needs restoration*

- *Be clear about partner roles and responsibilities*
- *Relatively simple because of fee title ownership; challenge will be similar large scale applications on easements*