

# An Introduction to NatureServe

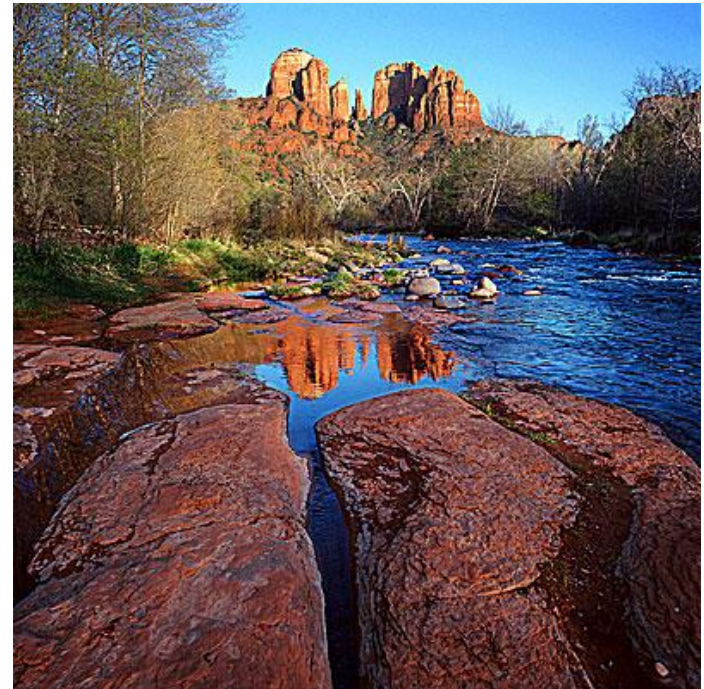
## Linking Conservation and Transportation Planning

Phoenix, Arizona  
November 8 & 9, 2006

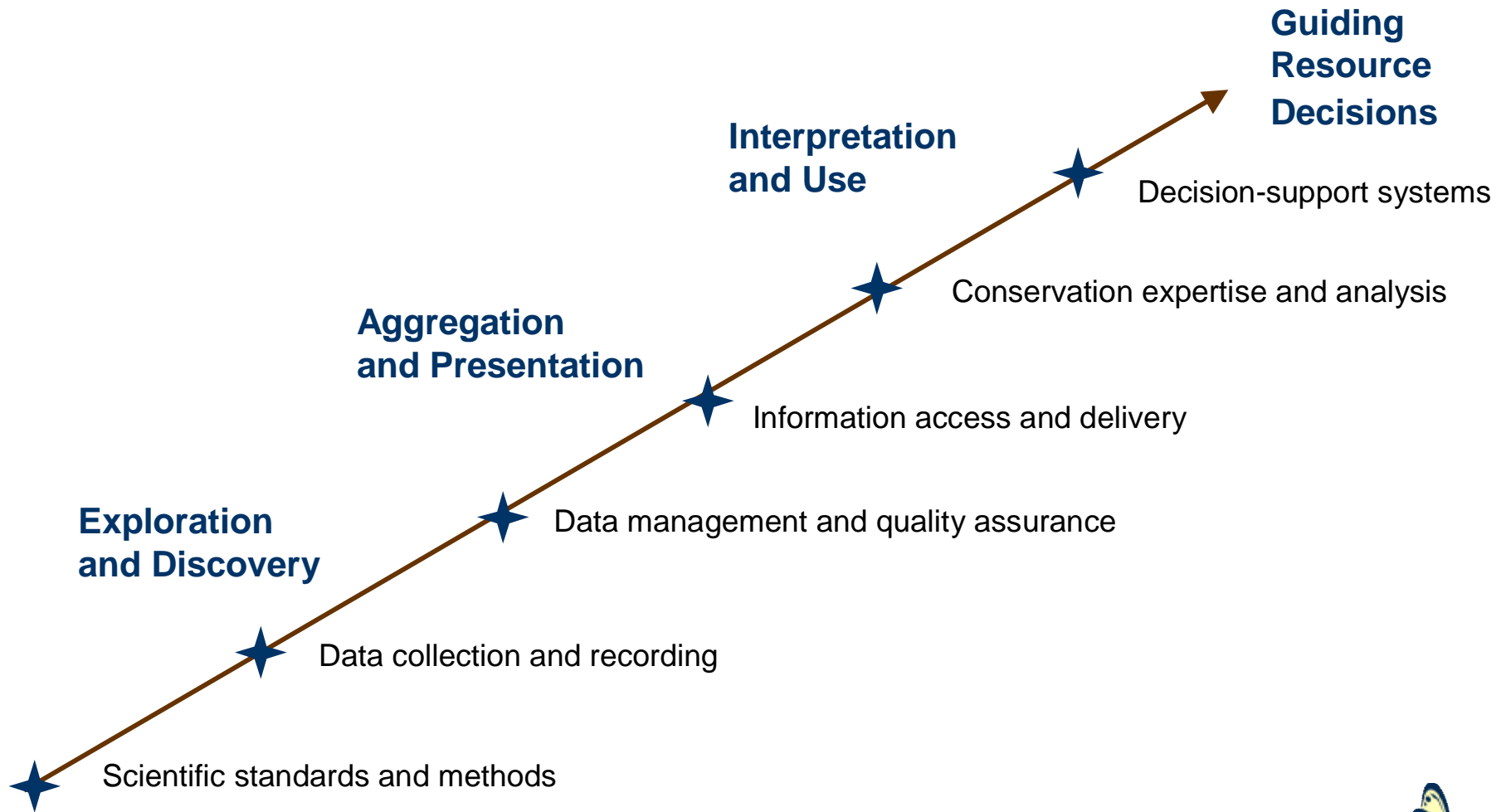


# NatureServe in Brief

- § An independent, non-profit conservation organization
- § Provides the scientific basis for effective conservation
- § Coordinates and supports the network of state natural heritage programs
- § Carrying forward 30 years of scientific experience
- § Collaboration and service to all sectors—government, conservation NGOs, academia, and industry.

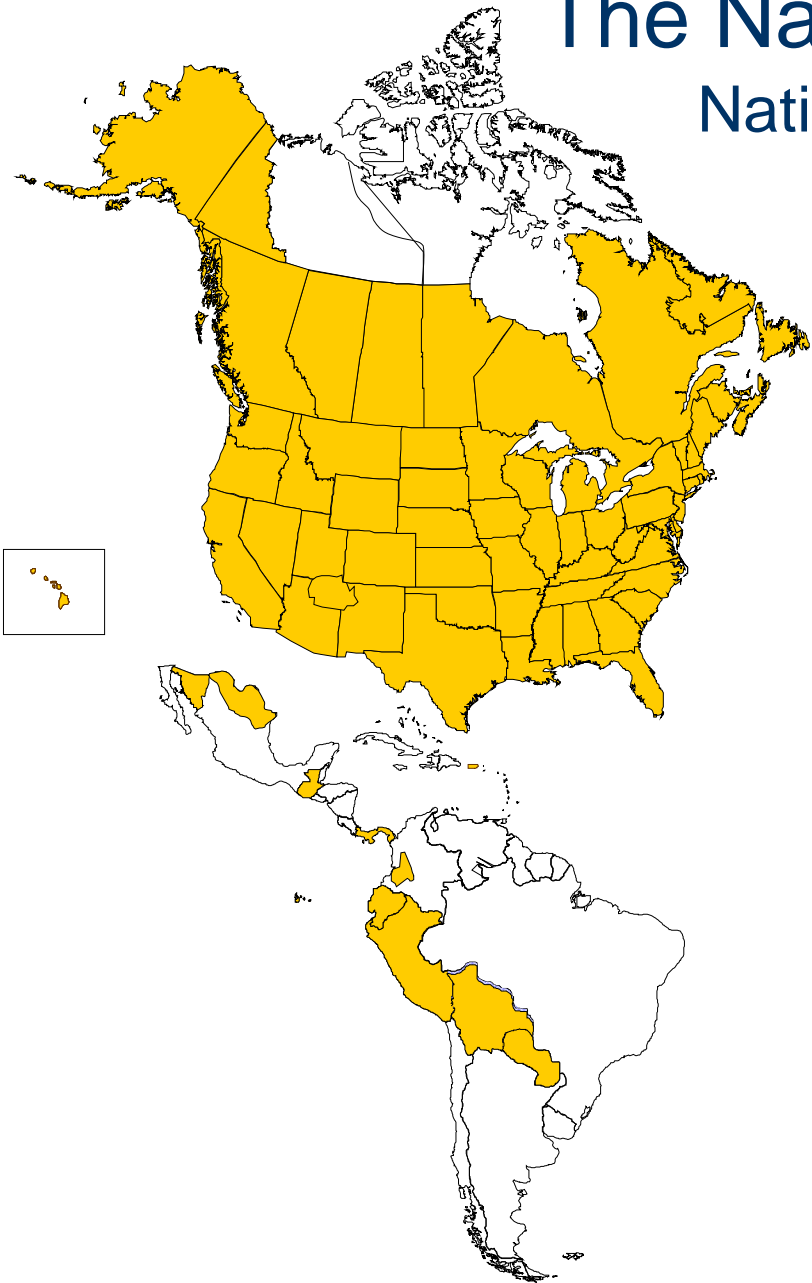


# NatureServe Information Value Chain



# The NatureServe Network

## Nationwide and Beyond



- NatureServe's Member Programs operate across the Americas to distribute authoritative information critical to conservation
- Member Programs use standard methods for collecting and managing biodiversity data
- Over 800 scientists and technology specialists working locally



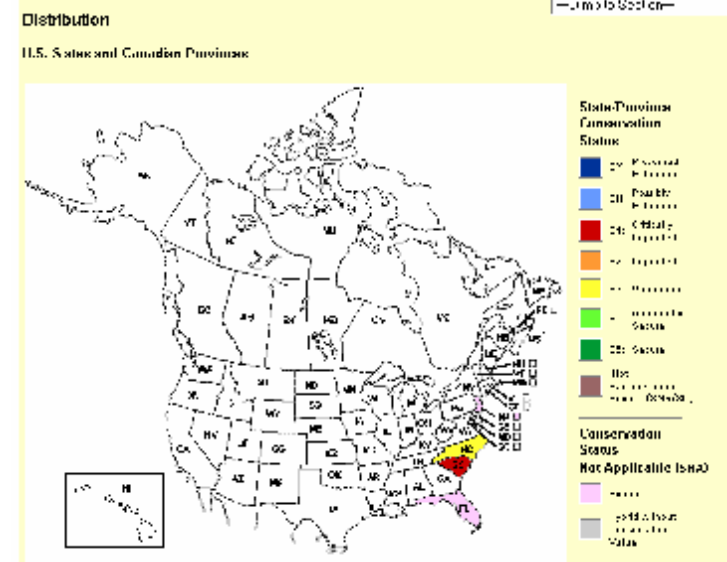
# Setting Management Priorities

§ NatureServe *conservation status ranks* consider a dozen risk factors such as:

- ü number and condition of populations
- ü trends in populations and ranges
- ü threats, either known or likely

§ Uses a one to five scale

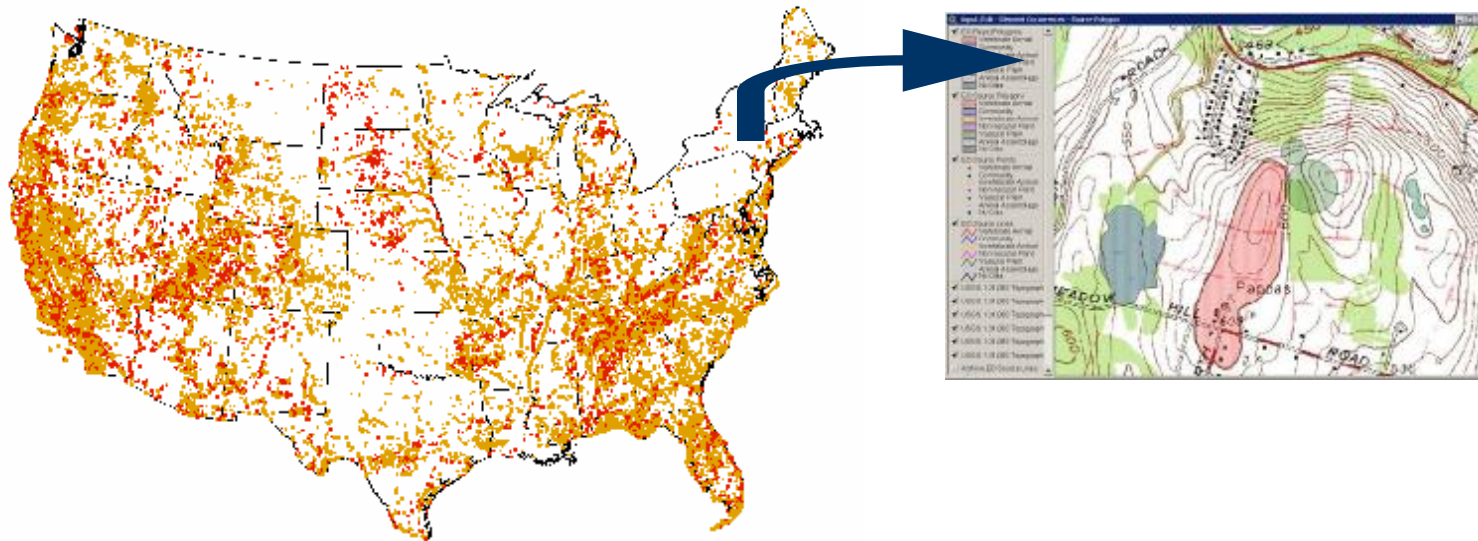
- ü critically imperiled (G1) to secure (G5)
- ü Presumed (GX) and possible extinctions (GH)



Venus fly-trap (G3)

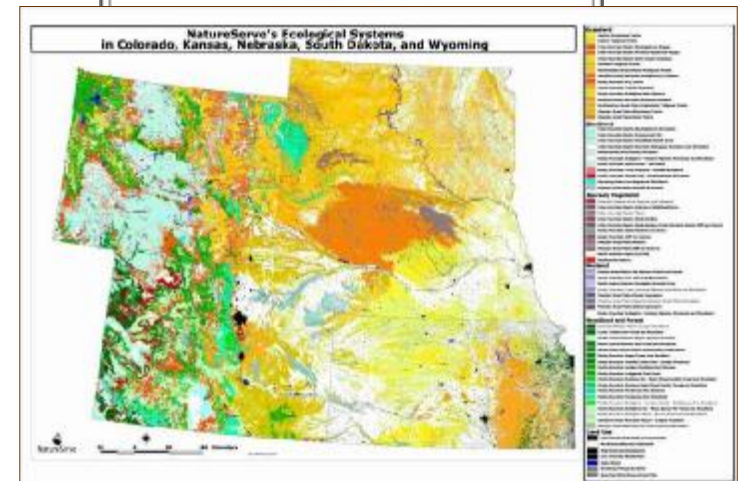
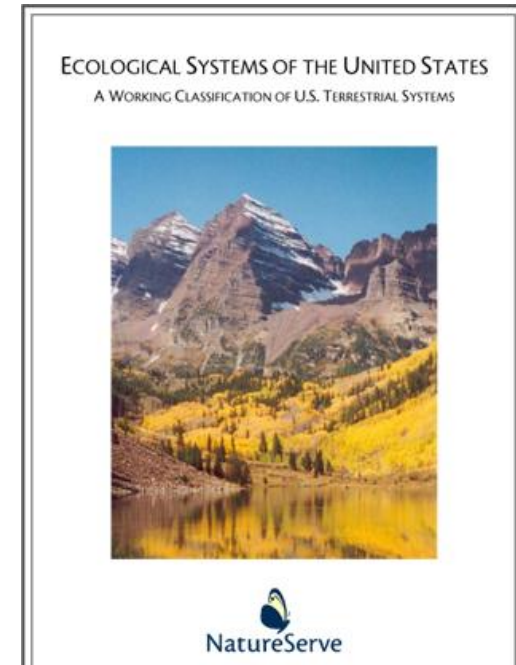
# Detailed Mapping of At-Risk Species and Ecological Communities

- § State natural heritage programs map population and stand-level occurrences using nationally consistent standards.
- § NatureServe maintains an aggregated national data set with more than 500,000 occurrences, and millions of individual observations.



# Ecological Communities Classification

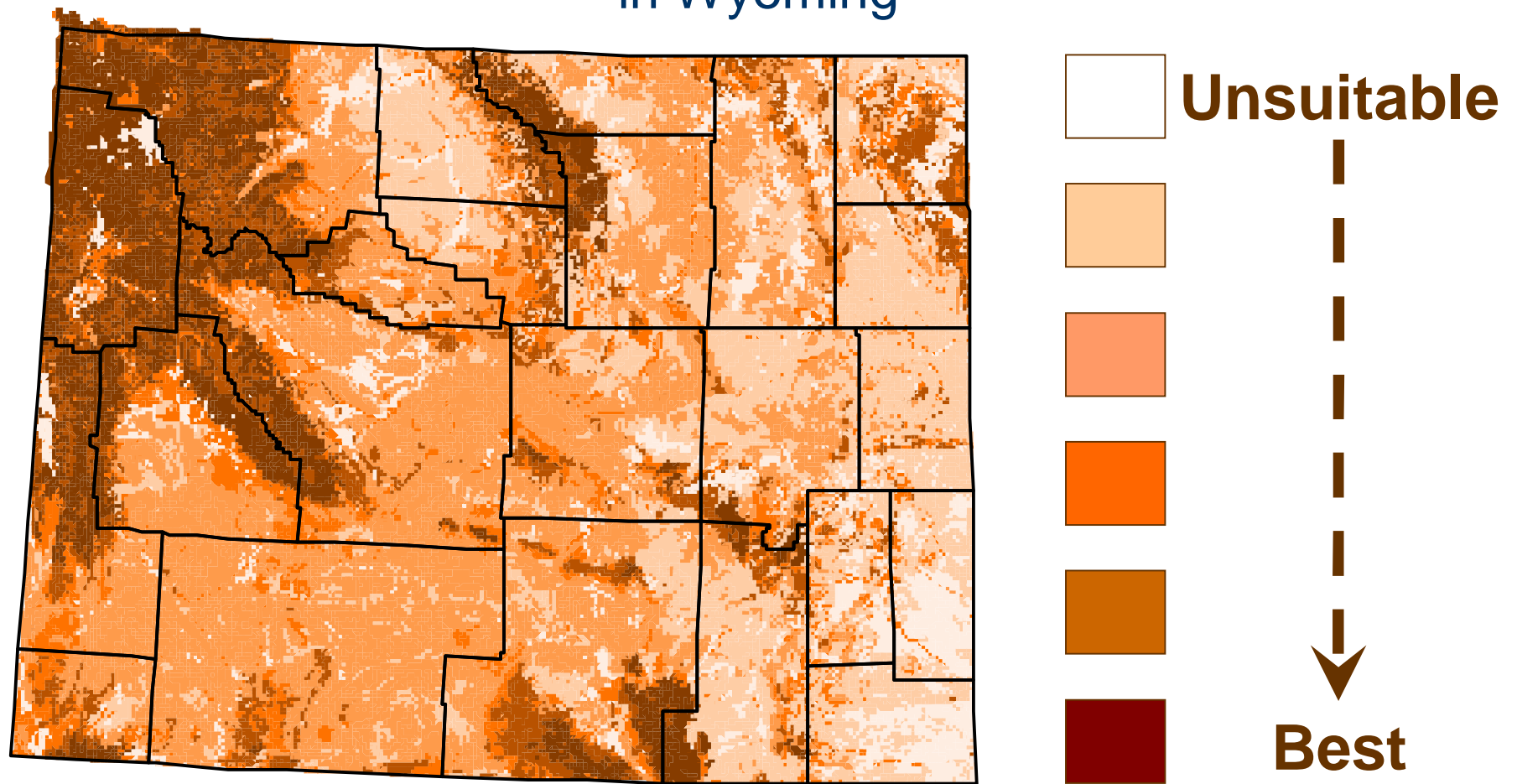
- § U.S. National Vegetation Classification – developed by TNC/NatureServe; now the federal data standard,
- § Canadian National Vegetation Classification – under development, beginning with forest ecosystems
- § Ecological Systems of the U.S. (pub. June 2003), Ecological Systems of Latin America (pub. Oct. 2003)
- Systems have been mapped across much of the Western U.S. and Canada, as well as other areas in the Americas (North, Central and South)
- § NatureServe network & partners continually adding to classifications & mapping systems and vegetation





# Predictive Distribution Modeling

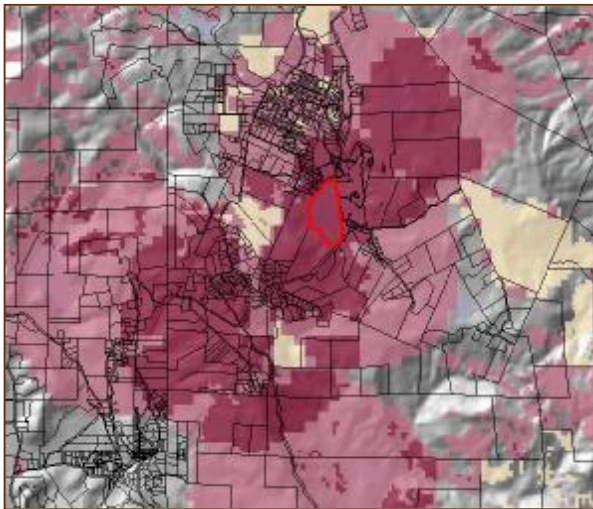
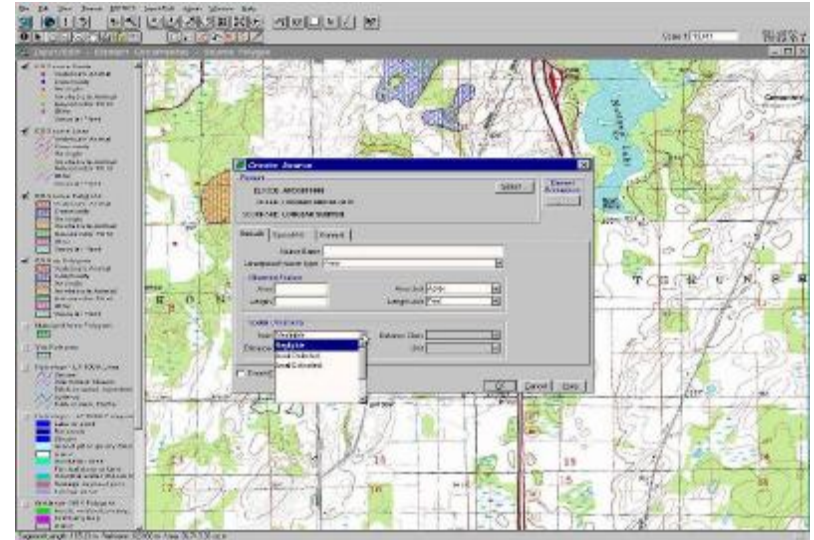
Canada lynx (*Lynx canadensis*) habitat in Wyoming



*Source: Wyoming Natural Diversity Database*



# Tools that Encompass Our Standards:



- Data Management - **Biotics**
- Data Access – **NatureServe Explorer** (<http://www.natureserve.org/explorer>)
- Land Use Analysis - **NatureServe Vista**



NatureServe

# Uses of NatureServe Data



# Department of Transportation

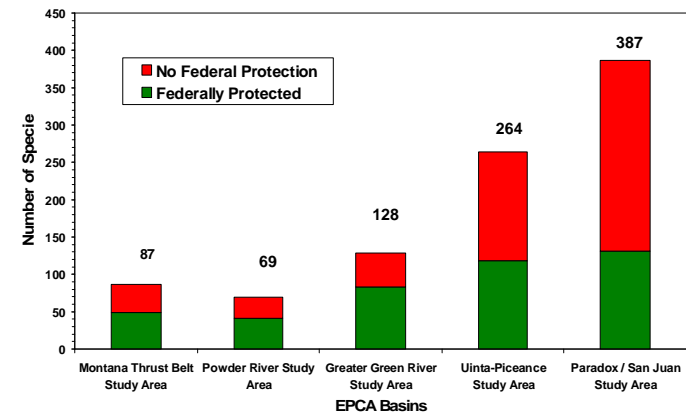
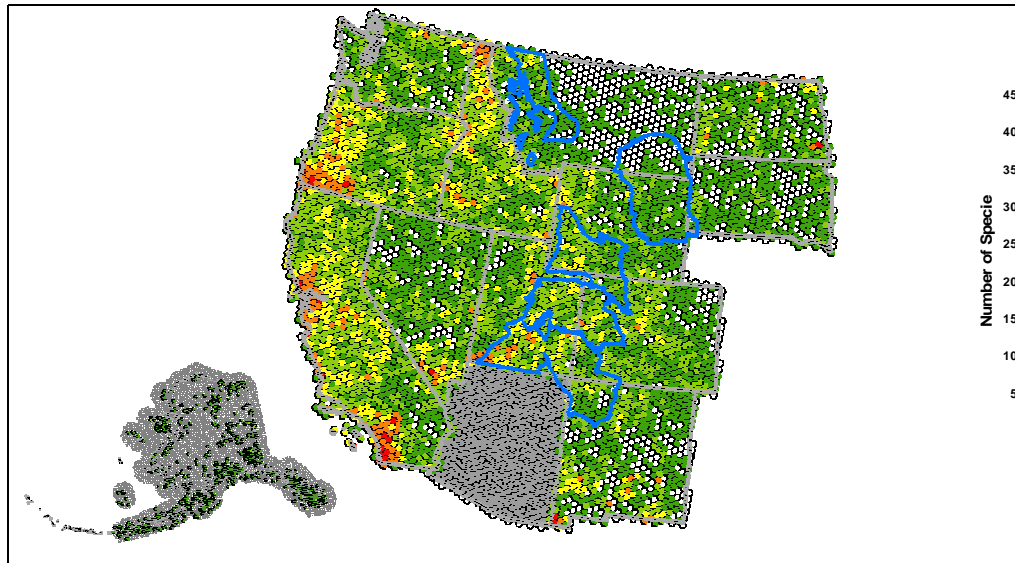
## Pipeline Safety Risk Mitigation

- § Formal rule for unusually sensitive areas (USAs) under the Pipeline Safety Act relies on NatureServe conservation status ranks (G1 and G2 species)
- § Nationwide mapping of ecological USAs relies on consistent NatureServe locational data for federally listed and G1G2 species



# Bureau of Land Management

A regional context for Species of Concern in BLM  
Resource Development Planning Areas



- § Document the importance of populations on BLM planning areas compared to other known populations
- § Quality and quantity measures



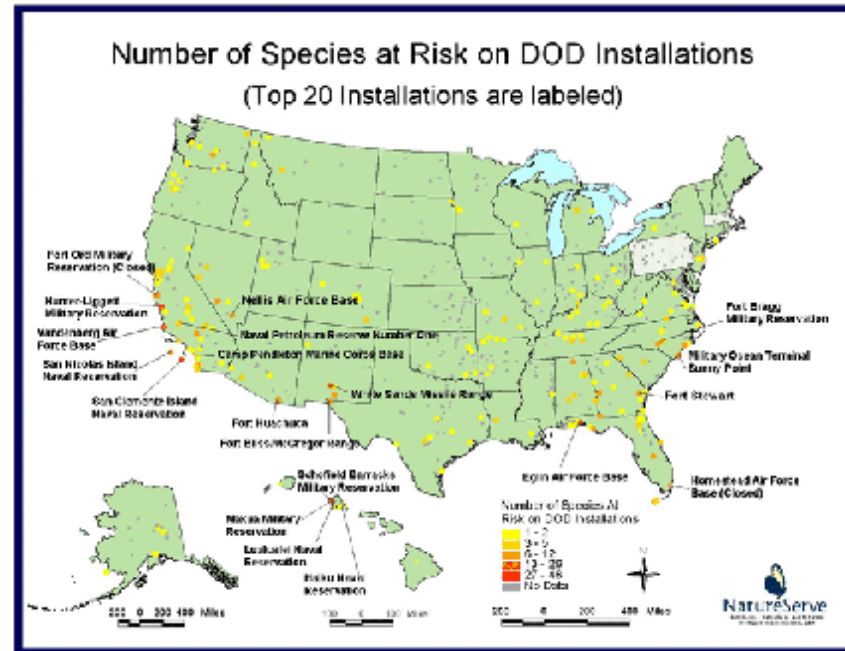
# Department of Defense

- Mapped the locations of at-risk plants and animals lacking federal protection
- The military incorporates this information into natural resource management plans to help protect these species before they are listed as threatened or endangered



**Longleaf Pine Regeneration  
at Fort Benning**

Photo by Milo Pyne



A scenic landscape featuring a mountain range under a sunset sky. The mountains are bathed in a warm, orange glow from the setting sun. In the foreground, the dark silhouettes of palm trees are visible against the bright sky. The overall atmosphere is serene and natural.

## **How can NatureServe assist the transportation community?**

**Improve and streamline planning processes through use of:**

**-Land Use Planning Tools  
(NatureServe Vista)**

**-Standardized Data on T&E Species  
and Areas of High Biodiversity**

**-Experts in conservation analysis**

## **In Summary:**

Conservation is a public objective. The tools and approaches presented in this workshop will assist us in identifying and preserving the unique and irreplaceable areas in Arizona.

