

# DEFENDERS OF WILDLIFE

---

## Supplemental PowerPoint Presentation

Habitat Disturbances under the Texas Habitat Conservation Plan for the Dunes Sagebrush Lizard





# How to interpret this presentation

**For each set of habitat disturbances...**

**The first slide shows an overview map of west Texas. The black rectangle shows the area of the map we will enlarge in subsequent slides.**

**The second slide shows the area before the disturbances. These images were taken in May or September 2012.**

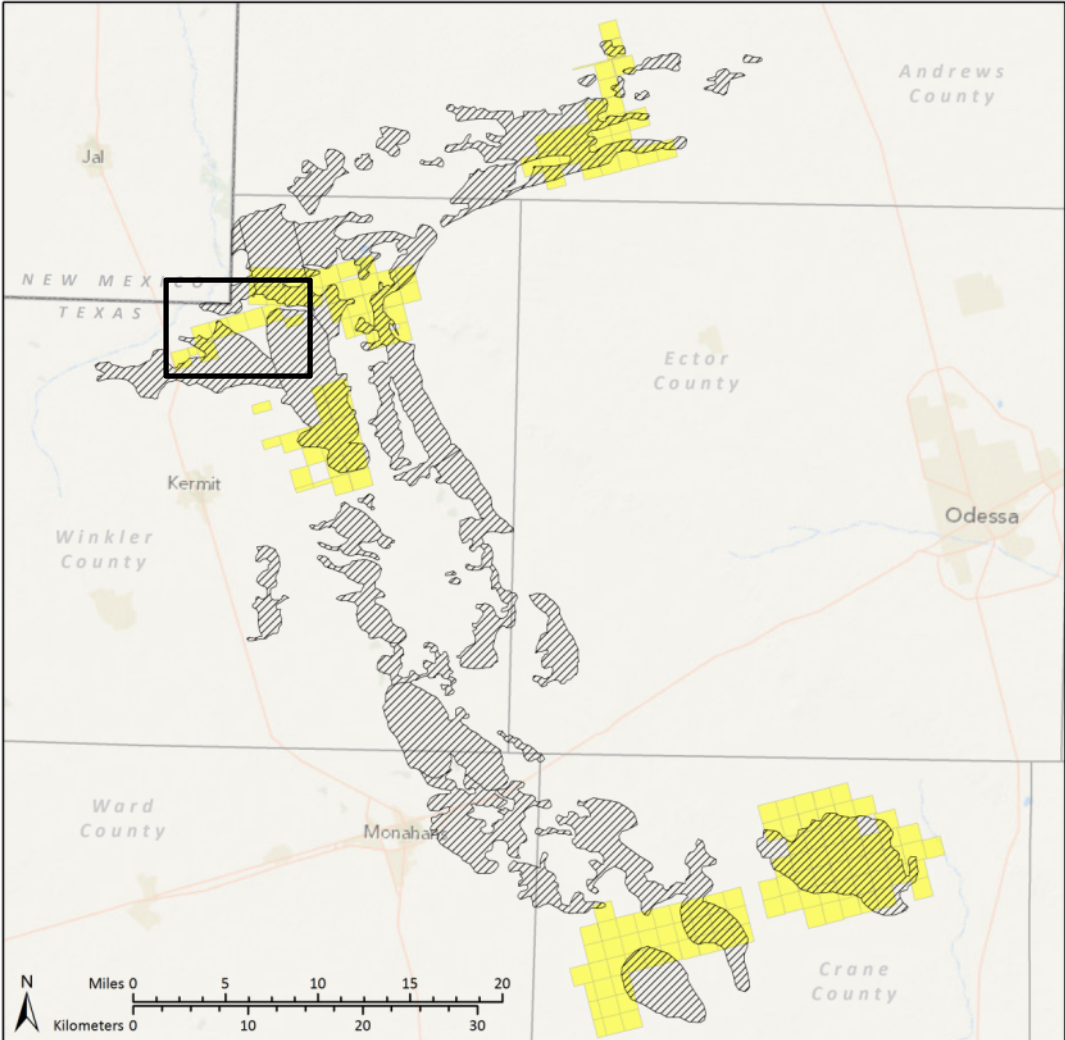
- ✓ **Focus on the arrows and circles. The next slide will show disturbances there.**
- ✓ **In all slides, sections enrolled in the Texas Plan are highlighted in light yellow. Mapped lizard habitat is inside the black polygons.**

**The next slide(s) shows the area after the disturbances. These images were taken in September 2012 or June 2013.**

**The last slides show close up images of the disturbances.**

- ✓ **We provide approximate latitude-longitude coordinates and the section/block numbers as they appear in the ConocoPhillips Certificate of Inclusion.**
- ✓ **If relevant, we also provide the drilling permit number, oil well pad number, and a hyperlink to this information. Notice that most of the permits were issued within the last year.**

**Overview Map  
North-central  
Winkler County**



**CCAA Enrolled Areas and Dunes Sagebrush Lizard Mapped Habitat in Southwest Texas**

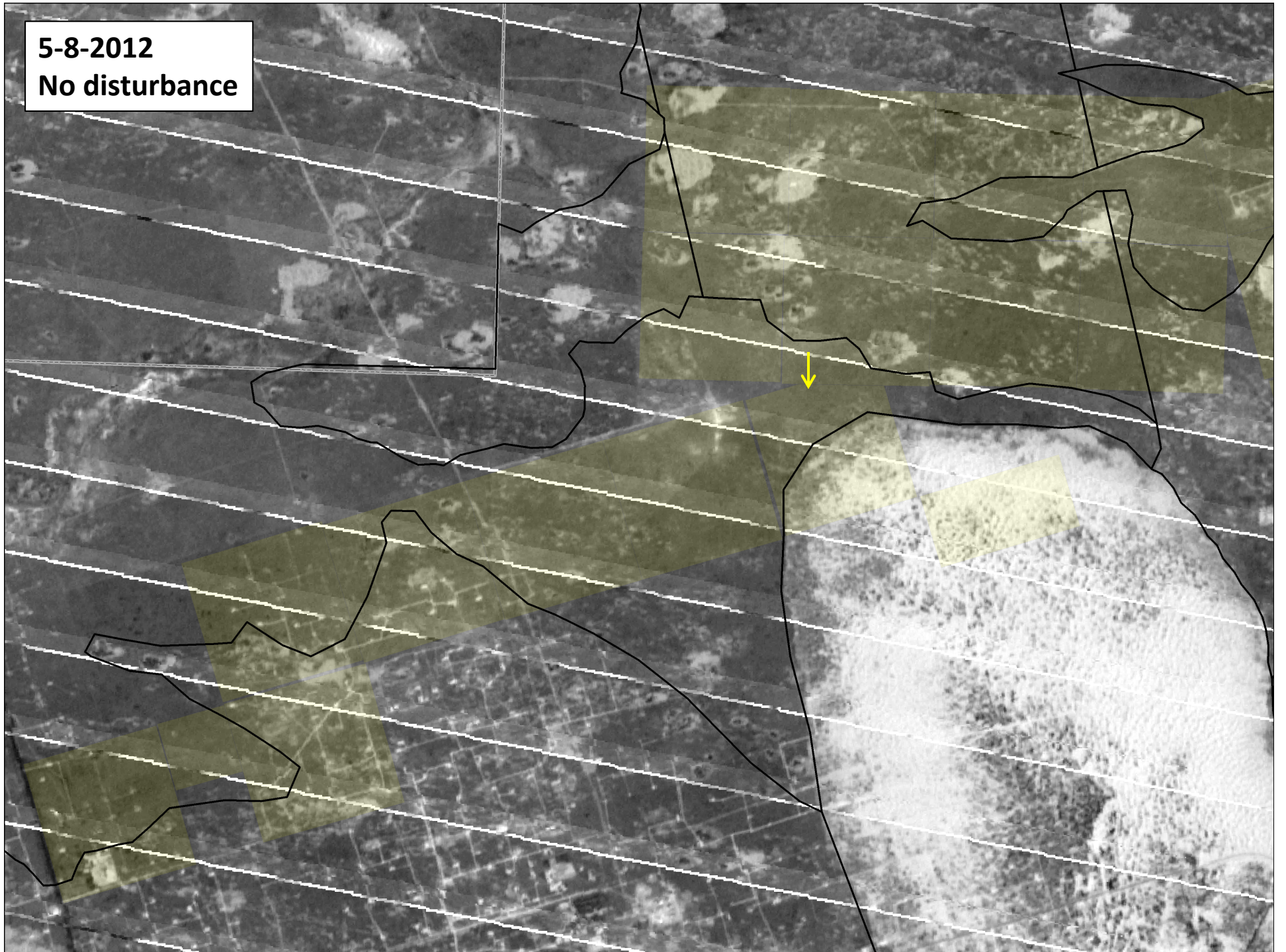
- LEGEND**
- CCAA enrolled areas
  - dunes sagebrush lizard mapped habitat
  - detail map areas

Data: Toby Hibbitts PhD, Texas A&M University; Texas Railroad Commission  
 Projection: NAD 1927 StatePlane Texas Central FIPS 4203

© 2013 Defenders of Wildlife

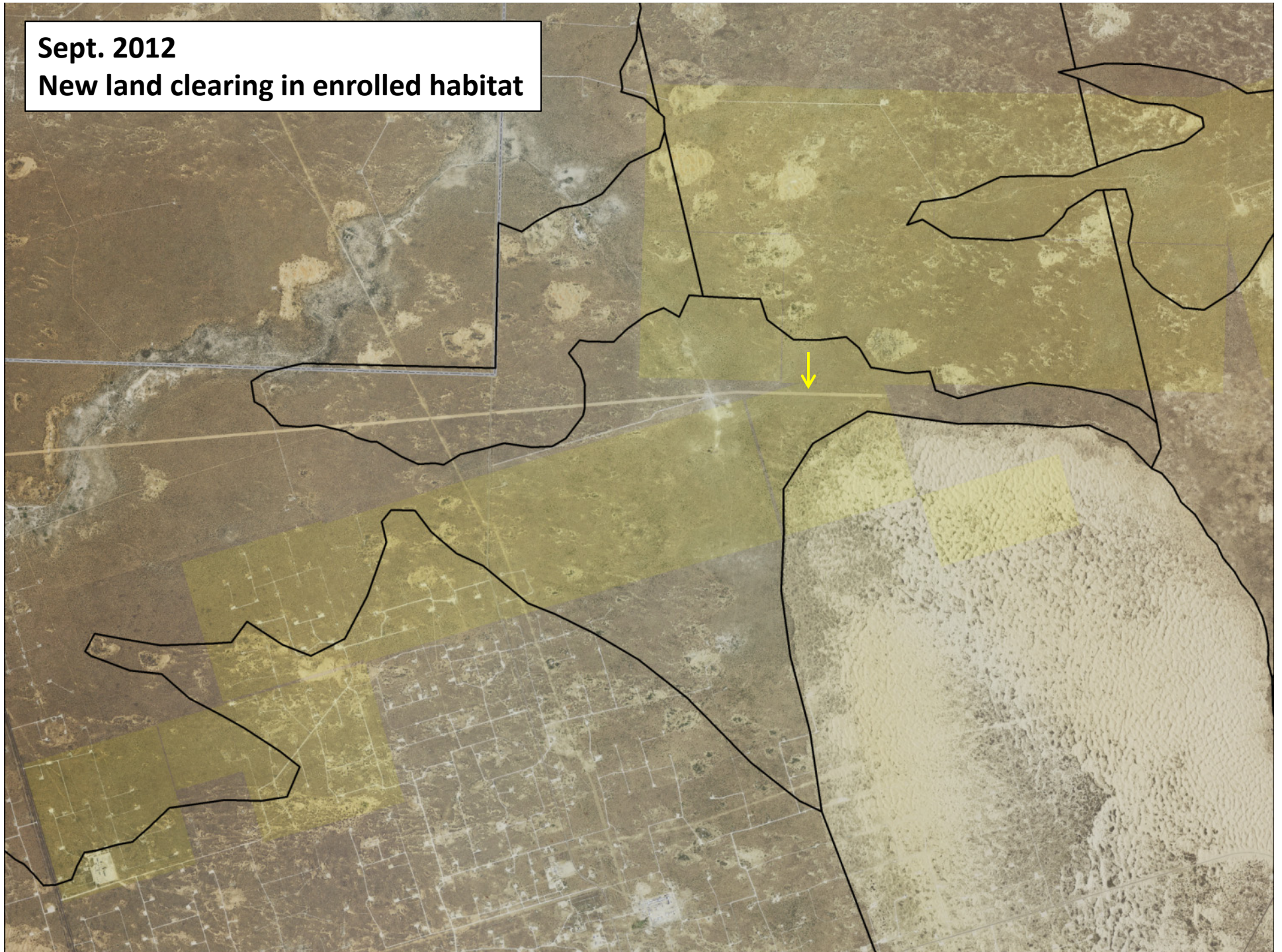


**5-8-2012**  
**No disturbance**





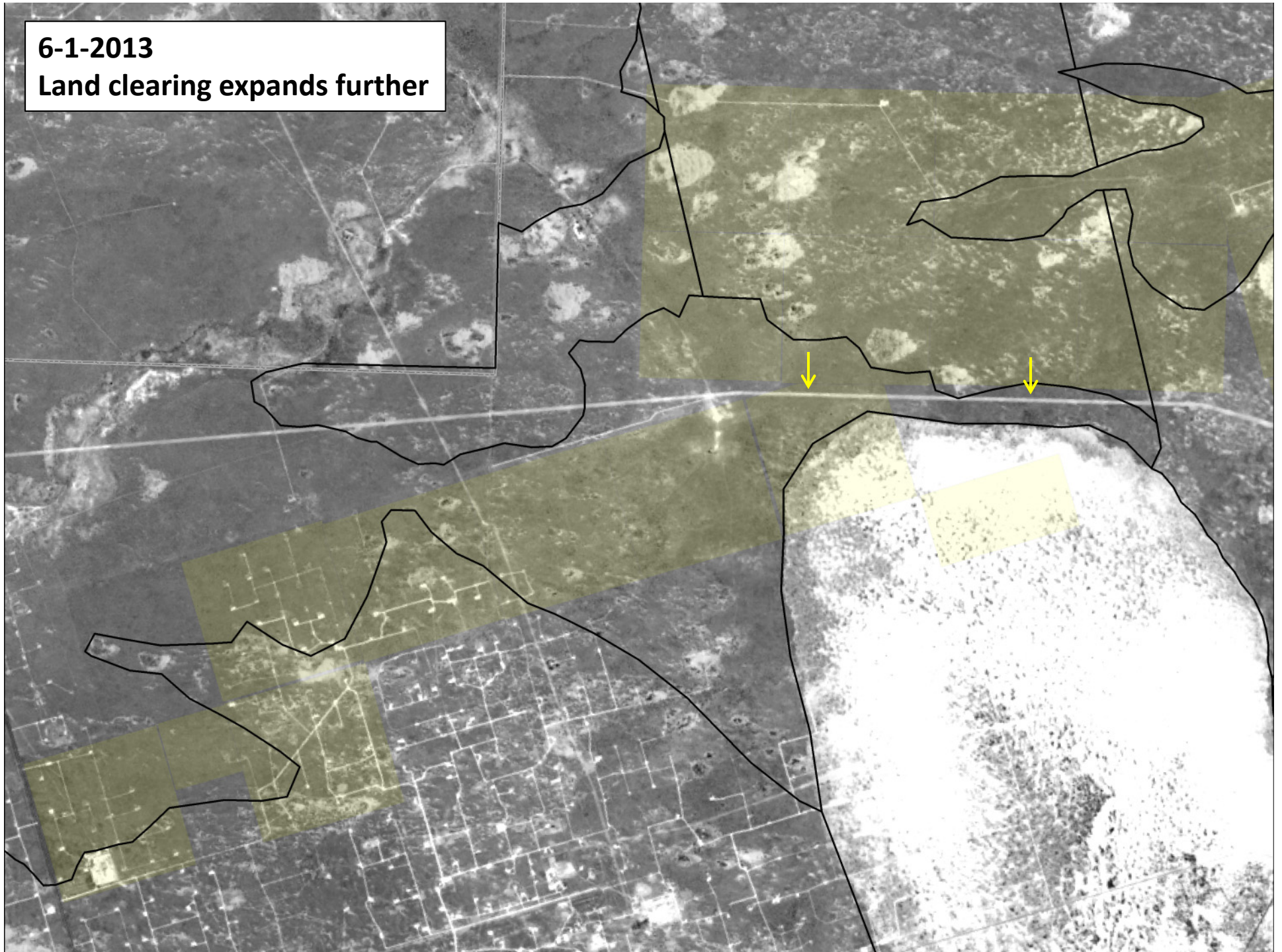
**Sept. 2012**  
**New land clearing in enrolled habitat**





**6-1-2013**

**Land clearing expands further**



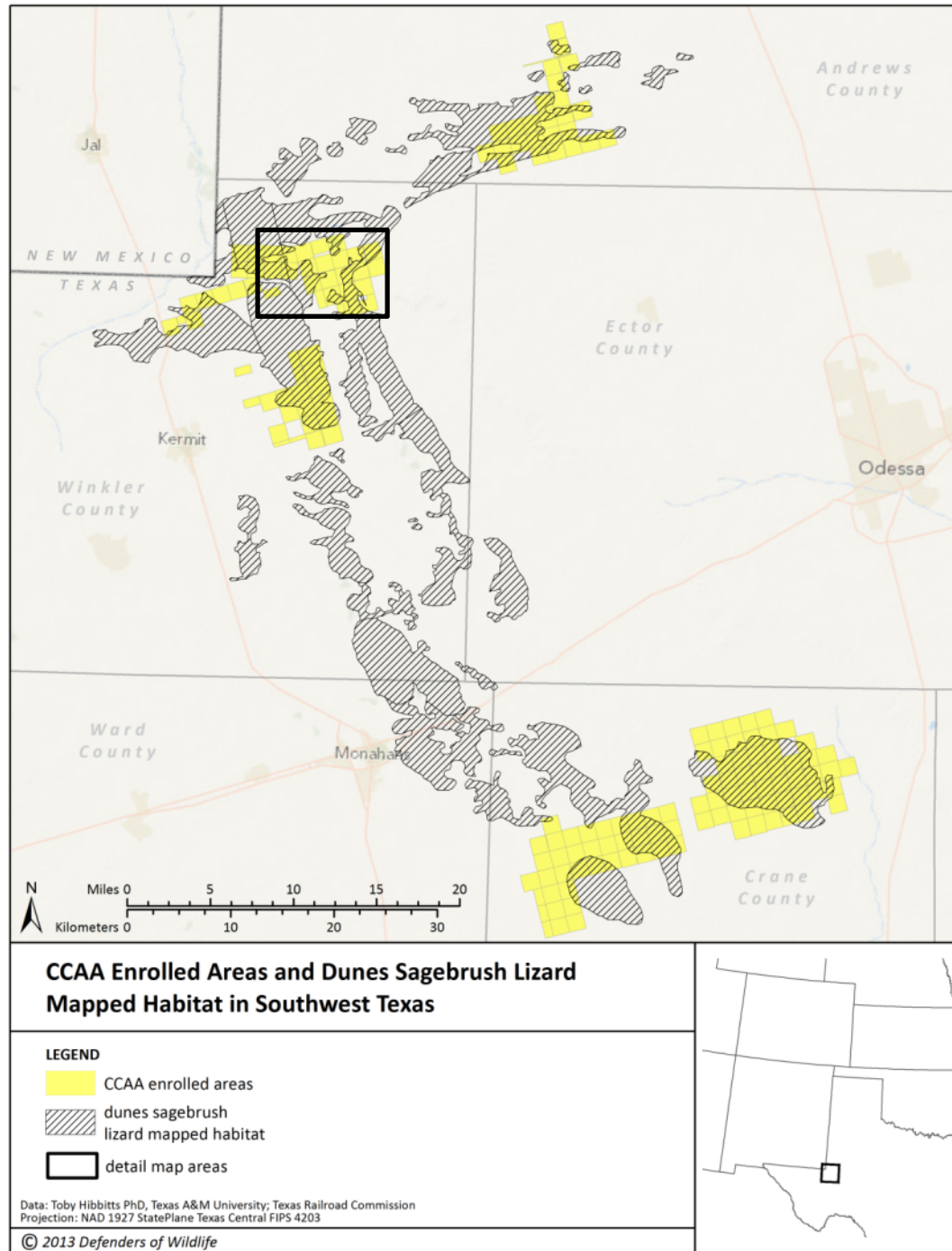


# Close-up of disturbance



Coordinates: 31.998468, -103.025508. Section 8, Block 77, Abstract 1674.

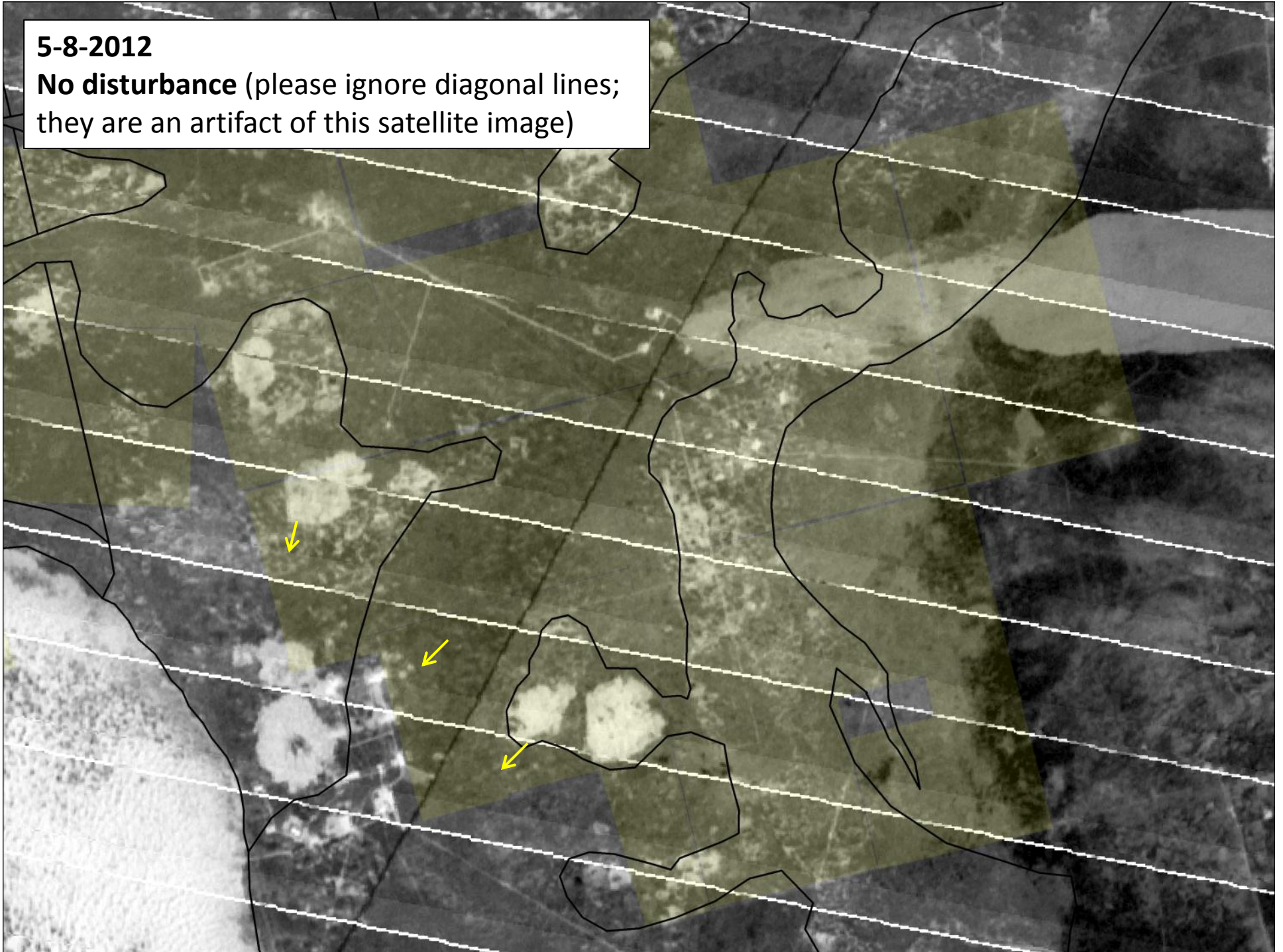
**Overview Map  
Northeast  
Winkler County**





**5-8-2012**

**No disturbance** (please ignore diagonal lines;  
they are an artifact of this satellite image)





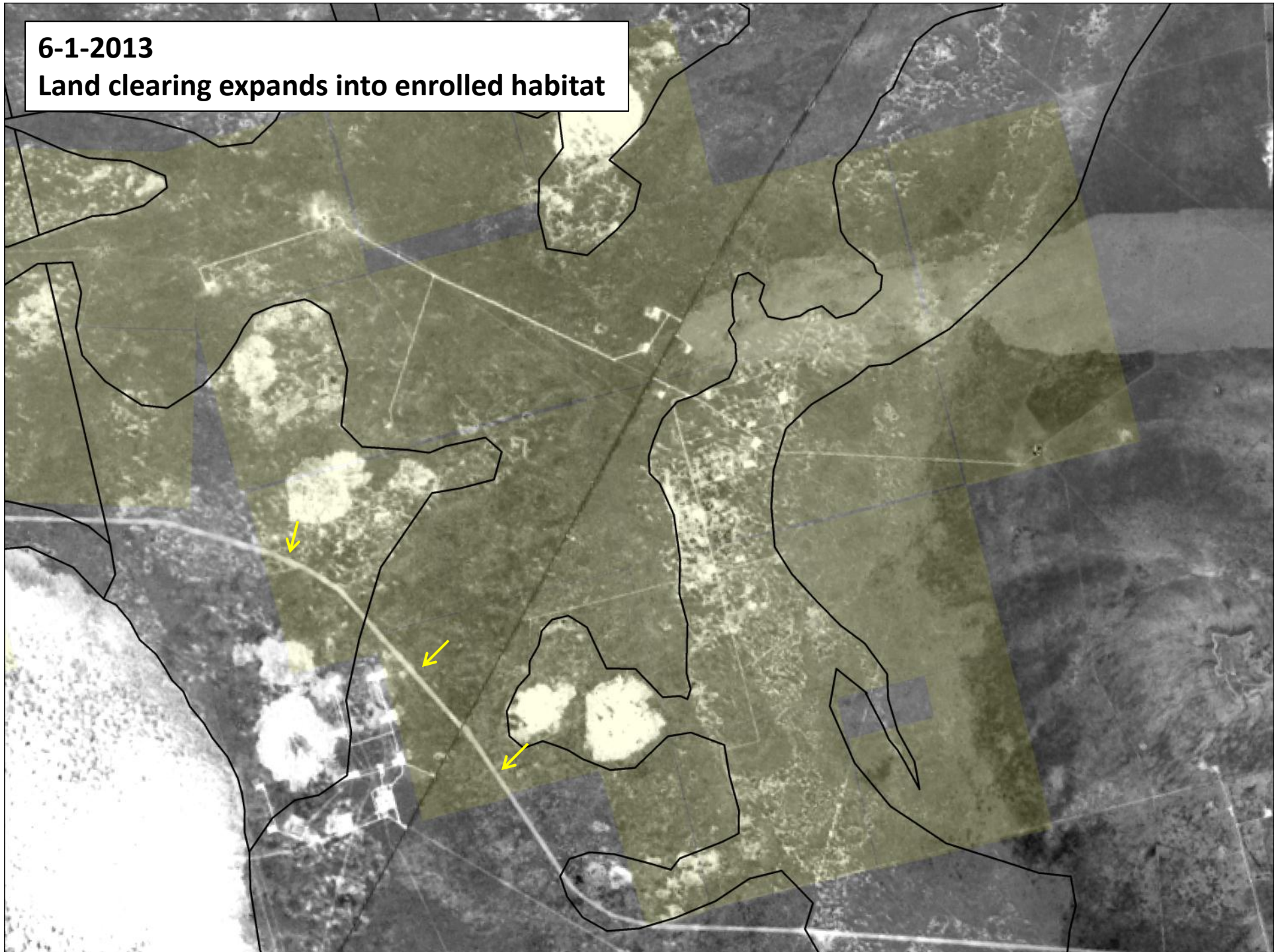
**Sept. 2012**  
**New land clearing through enrolled areas**





**6-1-2013**

**Land clearing expands into enrolled habitat**





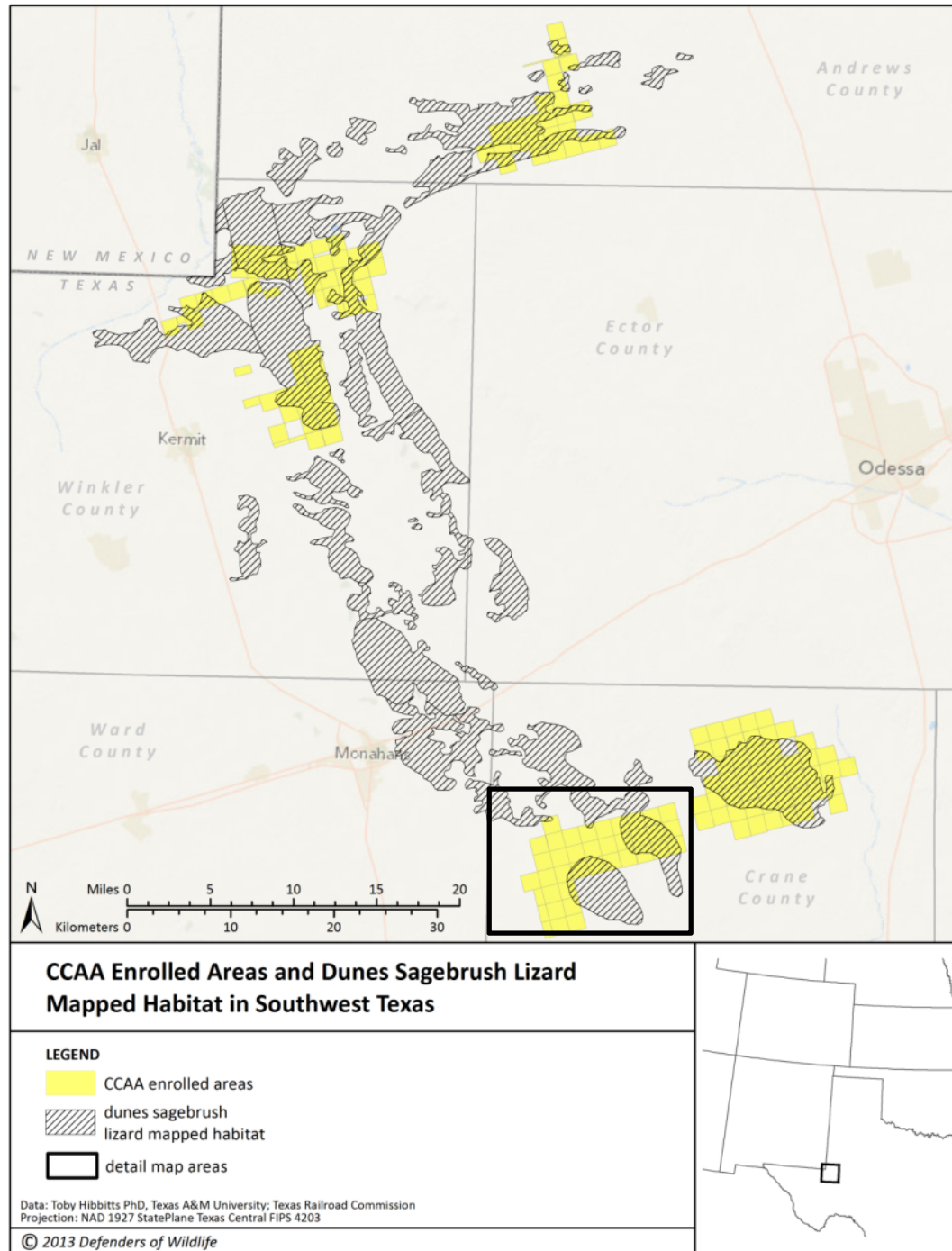
# Close-up of disturbance



Coordinates: 31.993355, -102.964793. Section 22, Block 57, Abstract 1630.



# Overview Map Northwest Crane County





**5-8-2012**  
**No road at yellow arrows**

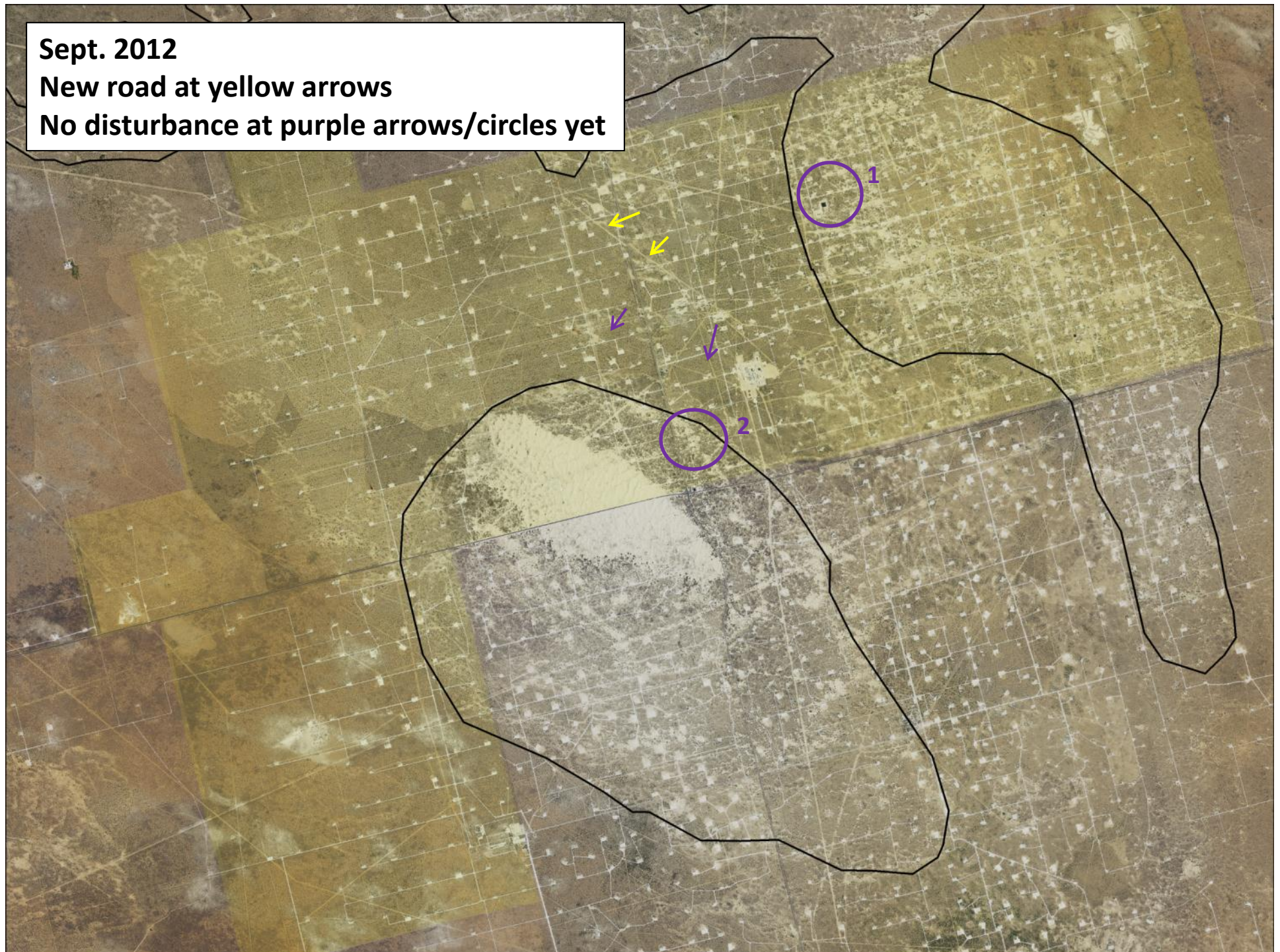




**Sept. 2012**

**New road at yellow arrows**

**No disturbance at purple arrows/circles yet**





6-1-2013

New disturbances at purple arrows/circles





# Close-up of disturbance



**Yellow arrows from prior slides**

Coordinates: 31.518703, -102.661047. Section 12, Block 21, Abstract 1244.



# Close-up of disturbance



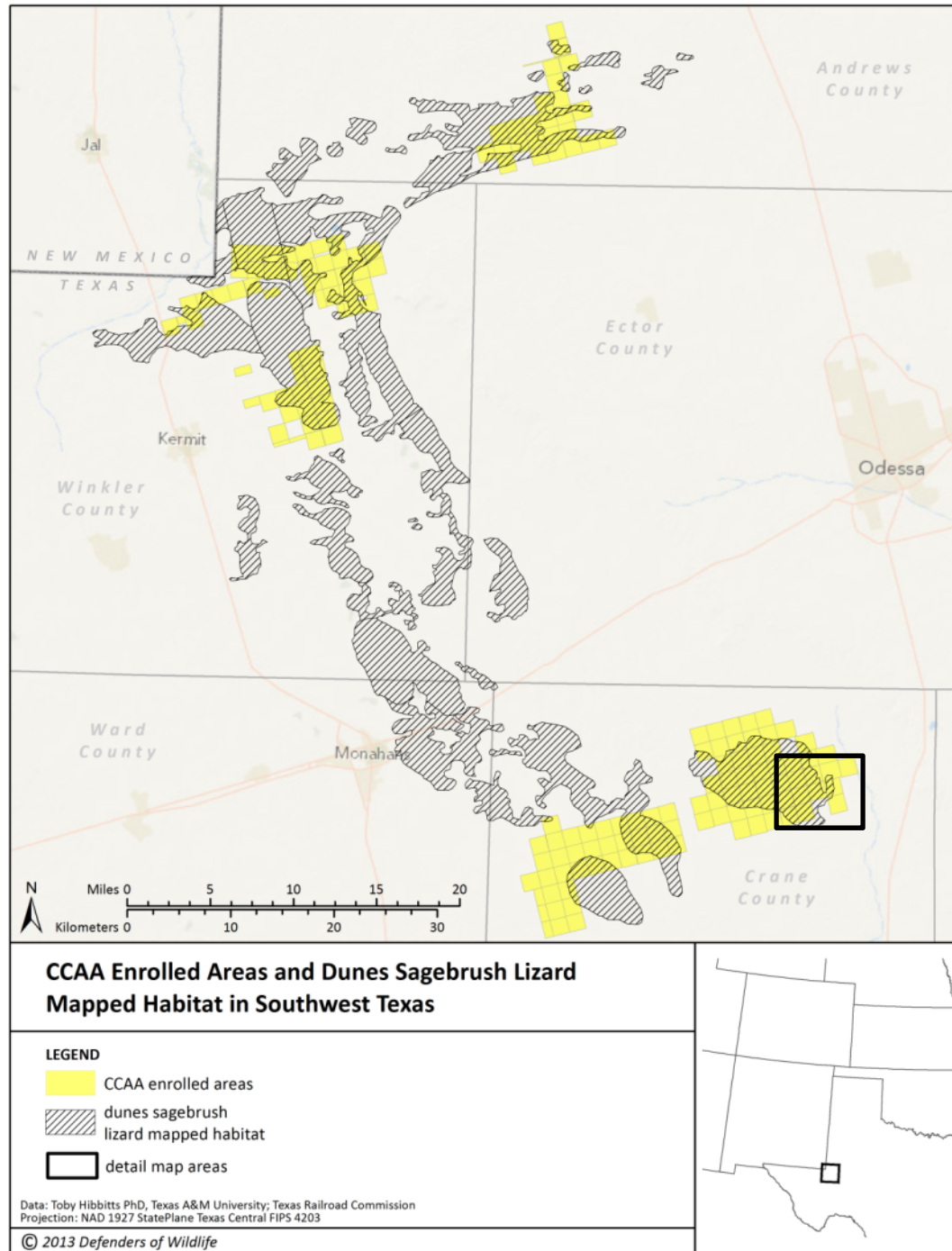
## Purple circle # 1 from prior slides

Coordinates: 31.523978, -102.630147. Section 18, Block 26, Abstract 1265.

Drilling permit #747002 for well # 2002D issued on 8/31/2012. Spud and surface casing date 12/16/2012 ([link to source](#)).



# Overview Map Northeast Crane County (Part I)



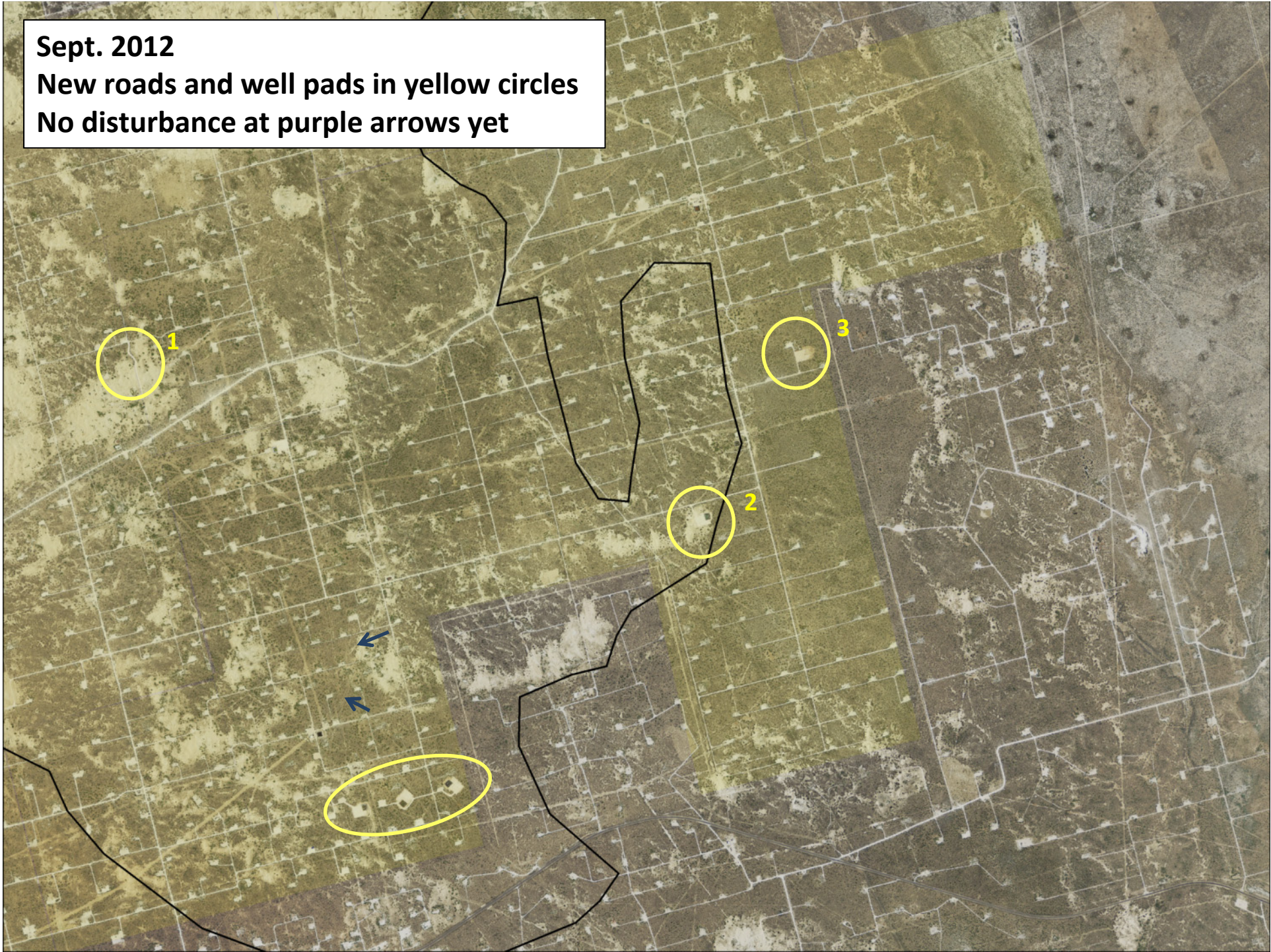


**5-8-2012**  
**No disturbances in yellow circles**





**Sept. 2012**  
**New roads and well pads in yellow circles**  
**No disturbance at purple arrows yet**





**6-1-2013**  
**New road at purple arrows**





# Close-up of disturbance



## Yellow oval from prior slides

Left well pad: Coordinates: 31.540304, -102.447758. Section 25, Block 25, Abstract 1194. Drilling permit #738338 for well # 1402 issued on 5/8/2012 ([link to source](#)).

Center well pad: Coordinates: 31.541236, -102.444466. Section 25, Block 25, Abstract 1194. Drilling permit # 738666 for well # 1403 issued on 5/4/2012 ([link to source](#)).

Right well pad: Coordinates: 31.541913, -102.440776. Section 25, Block 25, Abstract 1194. Drilling permit #738680 for well # 1404W amended on 10/18/2012. Spud date 12/9/2012; surface casing date 12/10/2012; drilling completed 12/14/2012 ([link to source](#)).





**Yellow circle #1 from prior slides**

Coordinates: 31.568645, -102.465504.

Section 14, Block 25, Abstract 1183.



**Yellow circle #3 from prior slides**

Coordinates: 31.570469, -102.415061.

Section 7, Block 24, Abstract 1170. Horizontal well surface adjacent to wells #692 and #753.





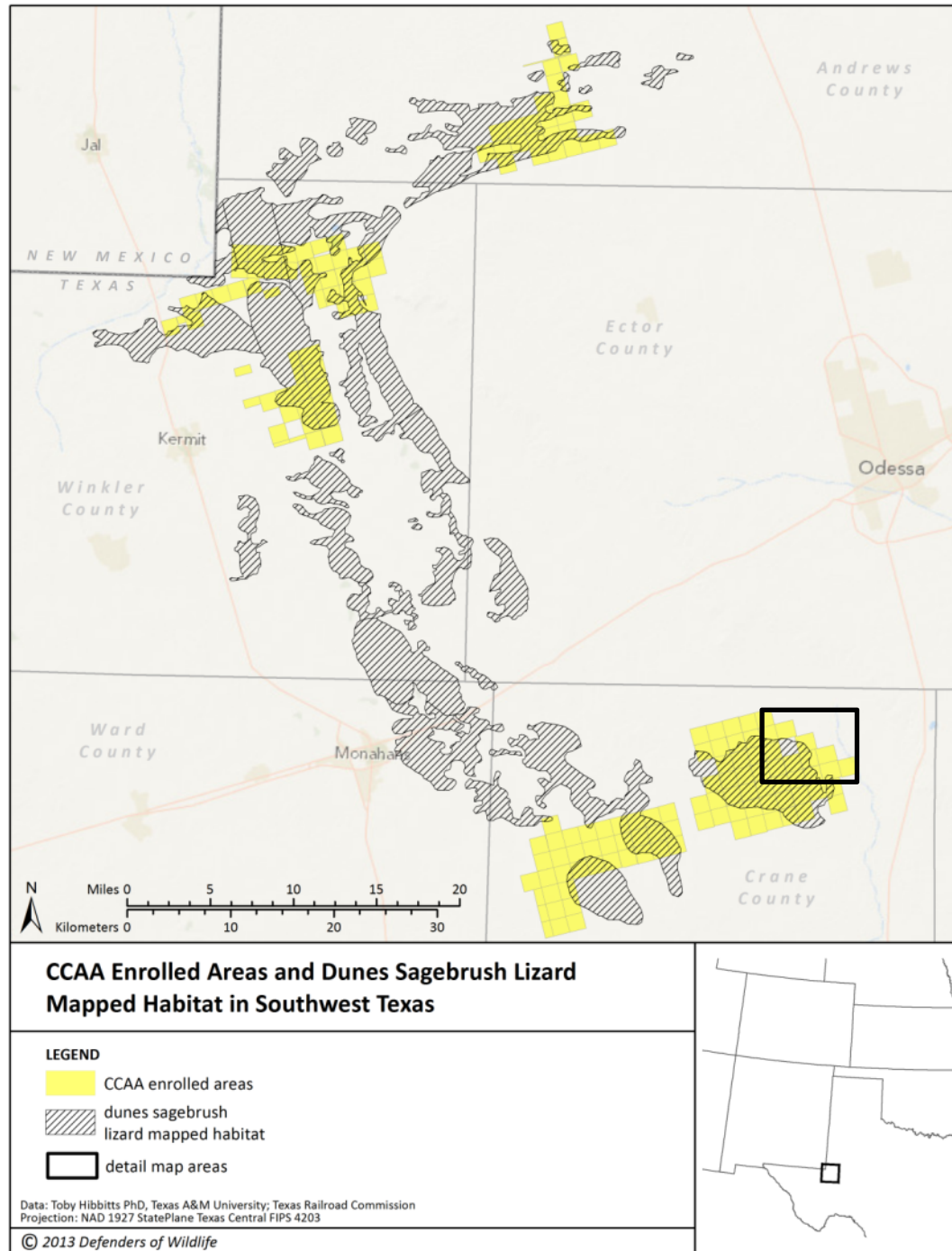
**Yellow circle #2 from prior slides**

Coordinates: 31.559561, -102.422338.

Section 7, Block 24, Abstract 1170. Horizontal well surface adjacent to well #276.



**Overview Map  
Northeast Crane  
County (Part B)**





**5-8-2012**  
**No disturbance**



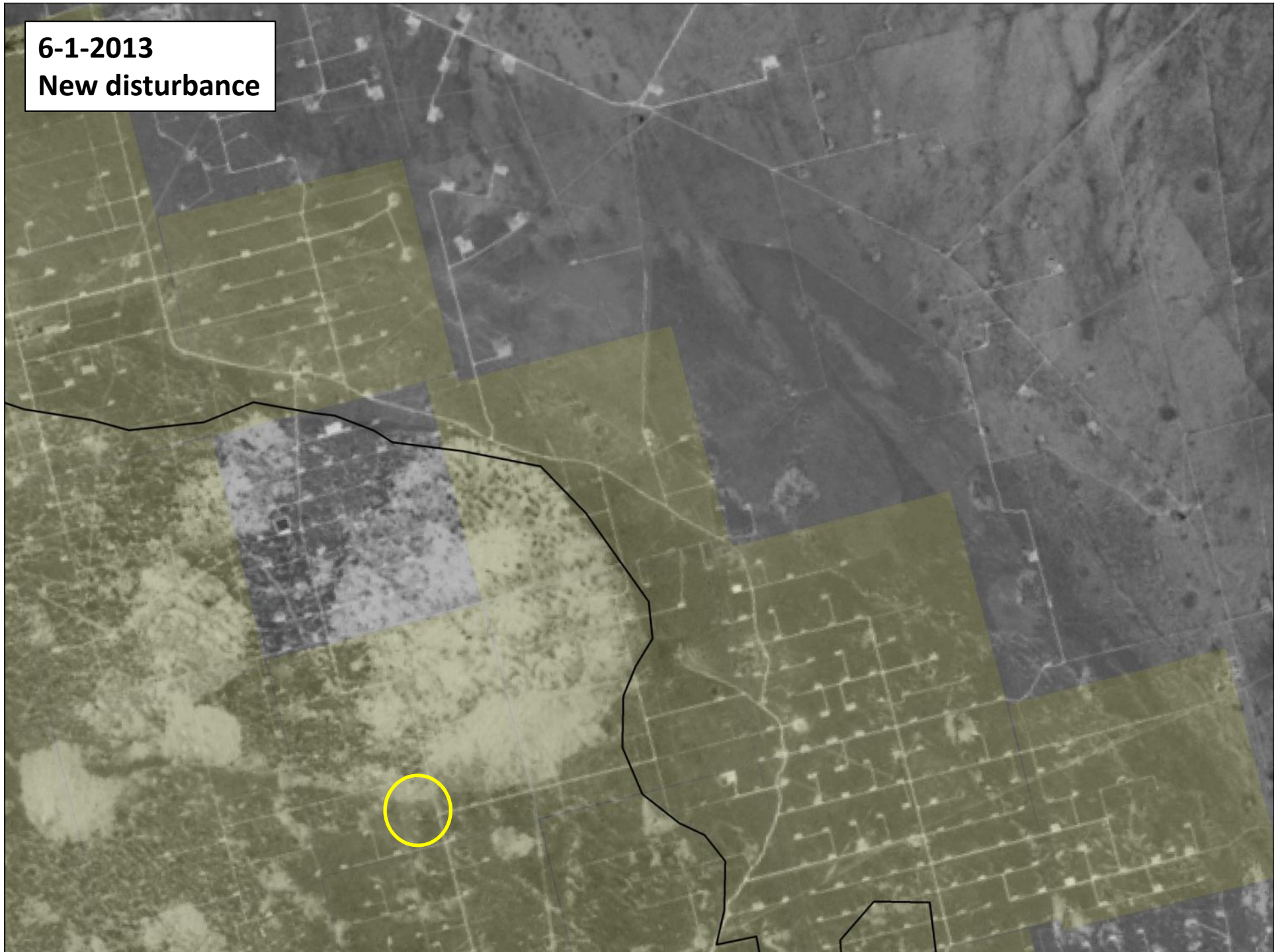


**Sept. 2012**  
**New disturbance**





**6-1-2013**  
**New disturbance**





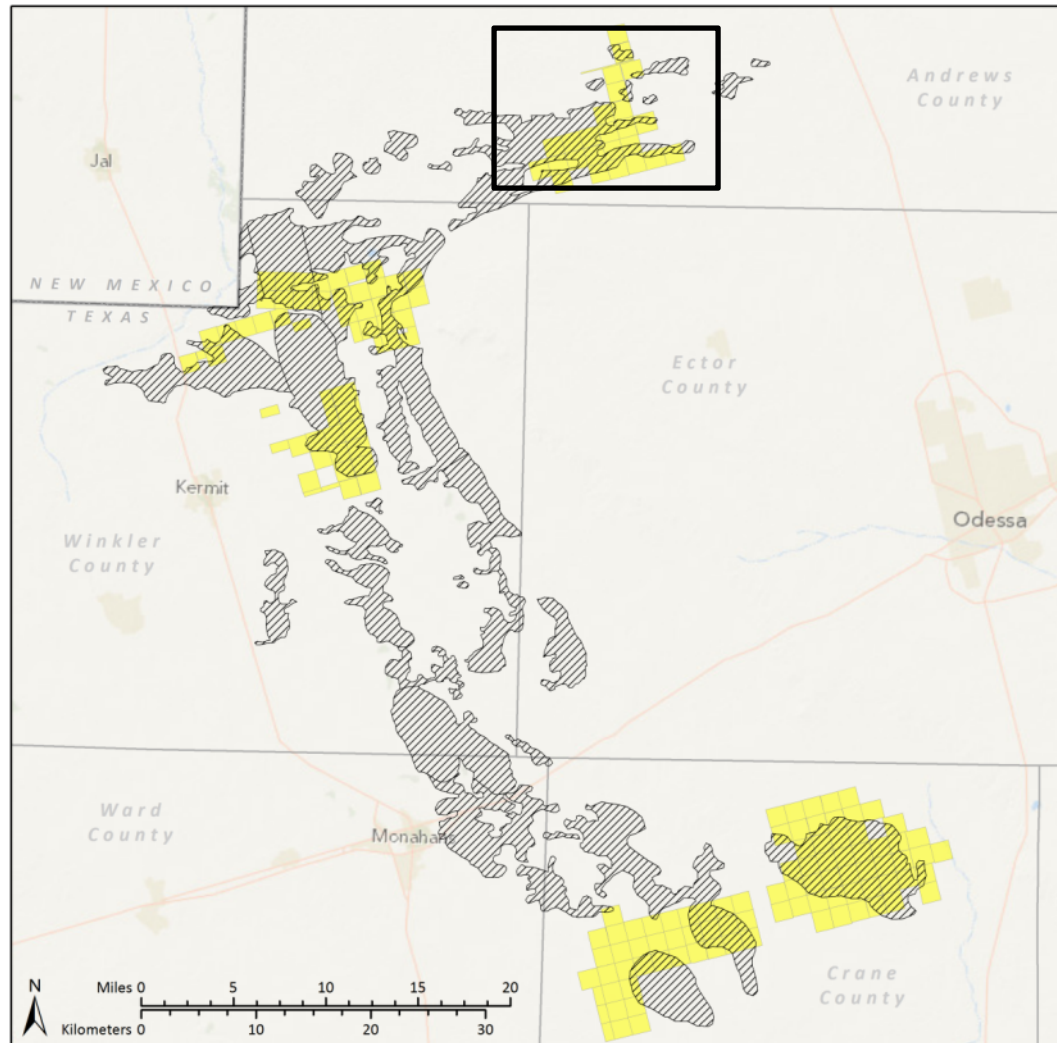
# Close-up of disturbance



Coordinates: 31.581085, -102.460944.  
Section 12, Block 25, Abstract 1181. Well #637W, API #10301469 ([link to source](#)).



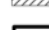


# Overview Map Andrews County



## CCAA Enrolled Areas and Dunes Sagebrush Lizard Mapped Habitat in Southwest Texas

### LEGEND

-  CCAA enrolled areas
-  dunes sagebrush lizard mapped habitat
-  detail map areas

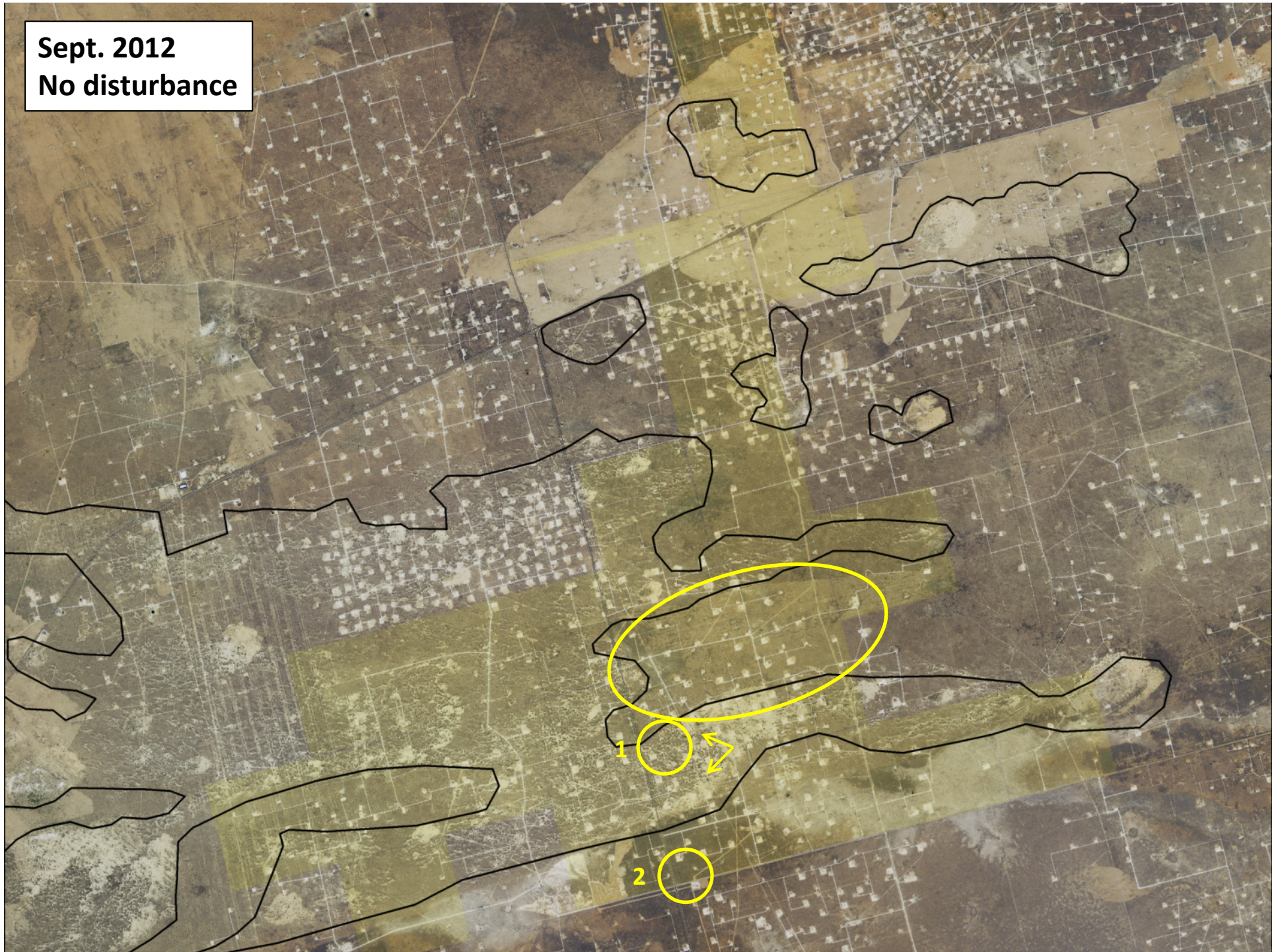
Data: Toby Hibbitts PhD, Texas A&M University; Texas Railroad Commission  
Projection: NAD 1927 StatePlane Texas Central FIPS 4203

© 2013 Defenders of Wildlife





Sept. 2012  
No disturbance





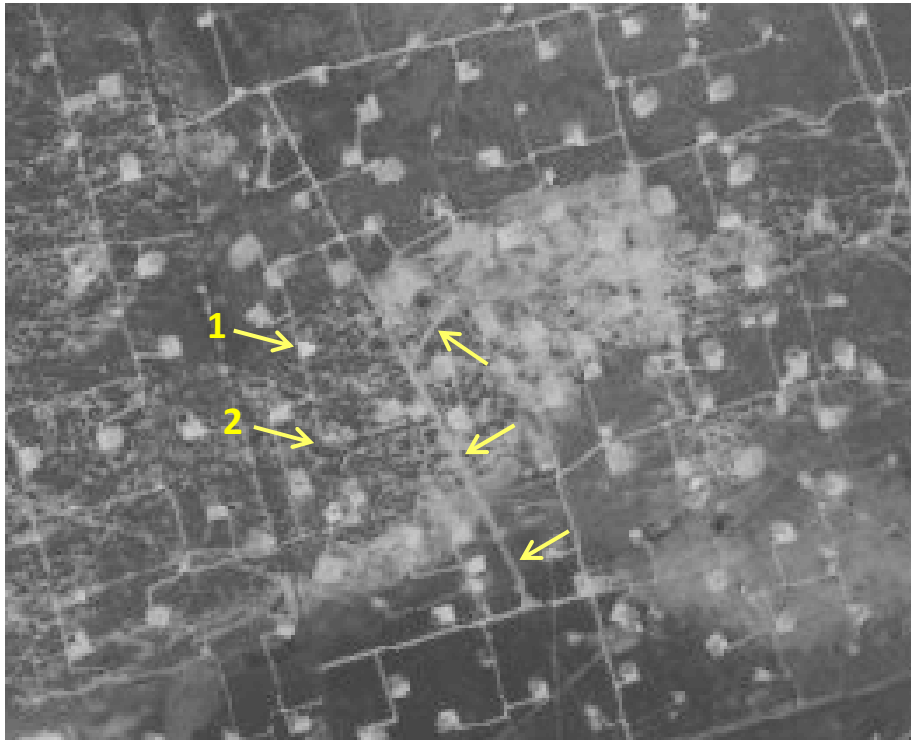
6-1-2013

New well pads and roads





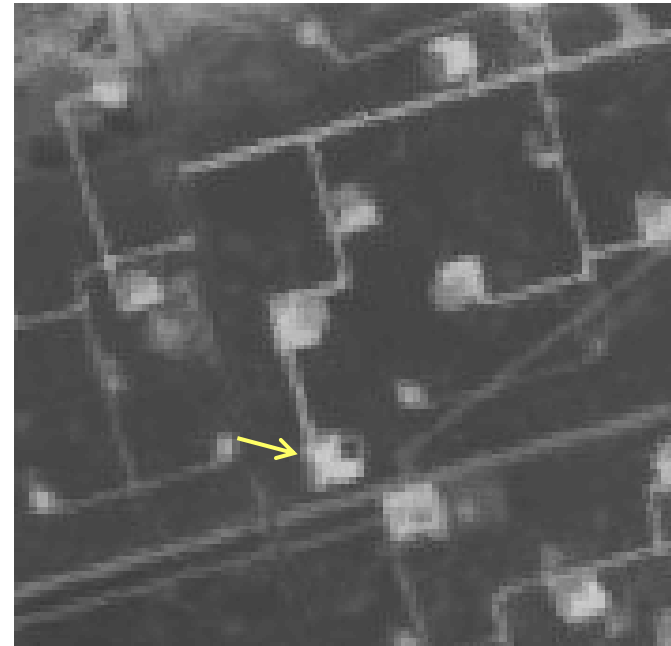
# Close-up of disturbance



## Circle #1 and arrows from prior slides

Coordinates: 32.122164, -102.721317. Section 30, Block 10 (no abstract).

Arrow 1 refers to drilling permit #755890 for well #238 issued on 3/11/2013 ([link to source](#)). Arrow 2 refers to drilling permit #755131 for well #239 issued on 1/28/2013 ([link to source](#)).



## Circle #2 from prior slides

Coordinates: 32.109006, -102.723505. Section 31, Block 10 (no abstract). Drilling permit #755936 for well #247 issued on 3/8/2013 ([link to source](#)).

These images are shown only at the lower 15-meter resolution because 1-meter resolution images were not yet available for June 2013.



## Sources for the images in this presentation

### **May 2012 images are from Landsat 7 ETM+ Satellite**

- We used images from “band 8” (0.52-0.90  $\mu\text{m}$ ) because they have the highest resolution (15 meters) for this particular satellite
- The diagonal lines are due to the malfunctioning scan line corrector aboard Landsat 7

### **September 2012 images are from NAIP (National Agricultural Imagery Program)**

- NAIP is administered by the USDA's Farm Service Agency (FSA)
- Aerial photographs are at 1 meter resolution (hence the sharpest images available)

### **June 2012 imagery are from Landsat 8 OLI Satellite**

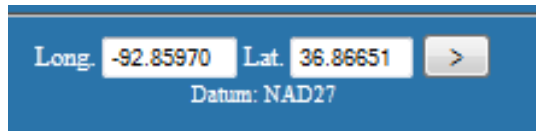
- We used images from “band 8” (0.50-0.68  $\mu\text{m}$ ) because they have the highest resolution (15 meters) for this particular satellite






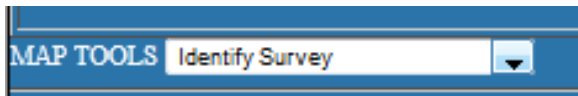
## To find enrolled sections on the Texas Railroad Commission website


1. Enter the latitude-longitude coordinates from any close-up image into the corresponding cells at the Texas Railroad Commission online map (<http://gis2.rrc.state.tx.us/public/startit.htm>). Then press the  button.



Long.  Lat.    
Datum: NAD27

2. Under the “Map Tools” dropdown menu, select “Identify Survey.” Click on the area of the map that contains your coordinates (you may first need to “zoom in” multiple times before seeing the exact coordinate point). A popup window will appear showing the section, block, and abstract numbers.



MAP TOOLS  

3. You can find the enrolled area in Exhibit A of the ConocoPhillips Certificate of Inclusion:

[http://www.fws.gov/southwest/es/Documents/R2ES/DSL\\_PECE\\_Appendix\\_2.pdf](http://www.fws.gov/southwest/es/Documents/R2ES/DSL_PECE_Appendix_2.pdf)

