

# The Conservation Registry

www.conservationregistry.org

## CONSERVATION REGISTRY AT A GLANCE. . .



The Conservation Registry is a smart, accessible database and mapping system that allows users to enter, search, map and track interesting conservation projects. The registry gathers data from multiple sources, ranging from small organizations and landowners to federal resource agencies, non-profit organizations, tribes and foundations. The Conservation Registry helps users see the context, distribution, and effectiveness of our collective efforts to protect and restore ecosystems.

## CONSERVATION AT WORK

Conservation Registry projects span the entire United States and capture the following data:

- On-the-ground restoration and management actions, including habitat improvements, species reintroduction, restoration of hydrologic function and invasive species removal;
- Actions that enhance land status, such as land acquisitions and conservation easements;
- Location-specific habitat and wildlife monitoring, education and research activities.

## BROWSE – REPORT – COLLABORATE

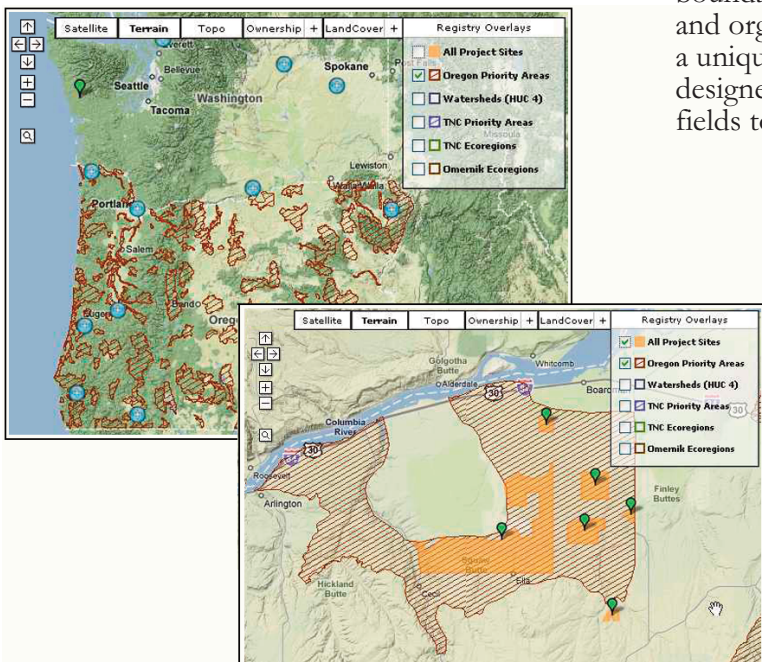
The registry balances simplicity and precision. The mapping tool is based on Google™ Maps and allows users to enter their own project locations on a map, search by map and visualize on-the-ground relationships between projects, sites and ownerships. Data entry and reporting has never been easier. Privacy and data consistency features are built in!

## USING YOUR DATA

If you represent a small organization and don't have electronic project tracking for your conservation efforts, the registry is all you need. Enter your projects through the online data entry form, map them using points, lines or polygon shapes, and see your data at work. Once entered, you can view, search, update — and report on — your conservation projects.

## THE CONSERVATION REGISTRY & YOUR ORGANIZATION

Who uses the registry? The general public, landowners, land trusts, the forest industry, federal, state and local agencies, policy-makers, conservation organizations, foundations, hunting, fishing and recreation groups. Larger agencies and organizations have access to administrative tools which allow the registry to harvest data from other databases and to share data across boundaries that ordinarily keep disciplines, agencies and organizations apart. Custom features may include a unique agency portal and web address, specially designed reporting features, even additional data entry fields to capture more information.



**Basic CONSERVATION REGISTRY features are FREE to most users. Sign up for your account and start searching and tracking your projects now.**

# The Conservation Registry

[www.conservationregistry.org](http://www.conservationregistry.org)

## REGISTRY PARTNERS. . .



Bonneville Power Administration  
Bureau of Land Management  
Cascade Land Conservancy  
Clean Water Services  
DataBasin  
David Evans and Associates  
Defenders of Wildlife  
Doris Duke Charitable Foundation  
Benjamin C. Hammett, Ph.D.  
Idaho Department of Fish & Game  
Metro Regional Government  
John Miller, Wildwood / Mahonia, Inc.  
M.J. Murdock Charitable Trust  
NatureServe  
Oregon Dept of Environmental Quality  
Oregon Dept of Fish & Wildlife  
Oregon Dept of Forestry  
Oregon Dept of Geology and Mineral Industries  
Oregon Dept of Parks and Recreation  
Oregon Dept of State Lands  
Oregon Dept of Transportation

Oregon Forest Resources Institute  
Oregon Habitat Joint Venture  
Oregon Institute for Natural Resources  
Oregon Trout  
Oregon Watershed Enhancement Board  
Oregon Zoo  
Pacific Coast Joint Venture  
Port of Portland  
Samuel S. Johnson Foundation  
The Nature Conservancy  
U.S.D.A. Forest Service  
U.S.D.A. F.S. PNW Research Station  
U.S. Geological Survey  
U.S. Fish and Wildlife Service  
University of Idaho  
Washington Biodiversity Council  
Washington Dept of Fish & Wildlife  
Washington State Recreation and Conservation Office  
The Wessinger Foundation  
Wildlands, Inc.  
The Wildlife Conservation Society

## USER ACCOUNTS

### BASIC USER ACCOUNTS

A basic user account is free to the public, landowners and small organizations. This account includes:

- Project data entry
- Browse by map
- Quick reports
- Data download
- User forum
- Search features

Sign up at [www.conservationregistry.org](http://www.conservationregistry.org)

### ORGANIZATIONAL ACCOUNTS

Larger organizations that want custom design features and specialized access to data will pay for development, annual maintenance, and if necessary, data import support. These accounts include:

- Custom portal & URL
- Batch management tools
- Data sharing
- Support

Additional reporting and database customization available on request.

### CONTACT:

Gina LaRocco                      [glarocco@defenders.org](mailto:glarocco@defenders.org)  
Kassandra Kelly                [kkelly@defenders.org](mailto:kkelly@defenders.org)  
Sara Vickerman                 [svickerman@defenders.org](mailto:svickerman@defenders.org)

Defenders of Wildlife, Northwest Office  
1880 Willamette Falls Drive #200  
West Linn, Oregon 97068  
503-697-3222

