



I-93 Community Technical Assistance Program

CTAP



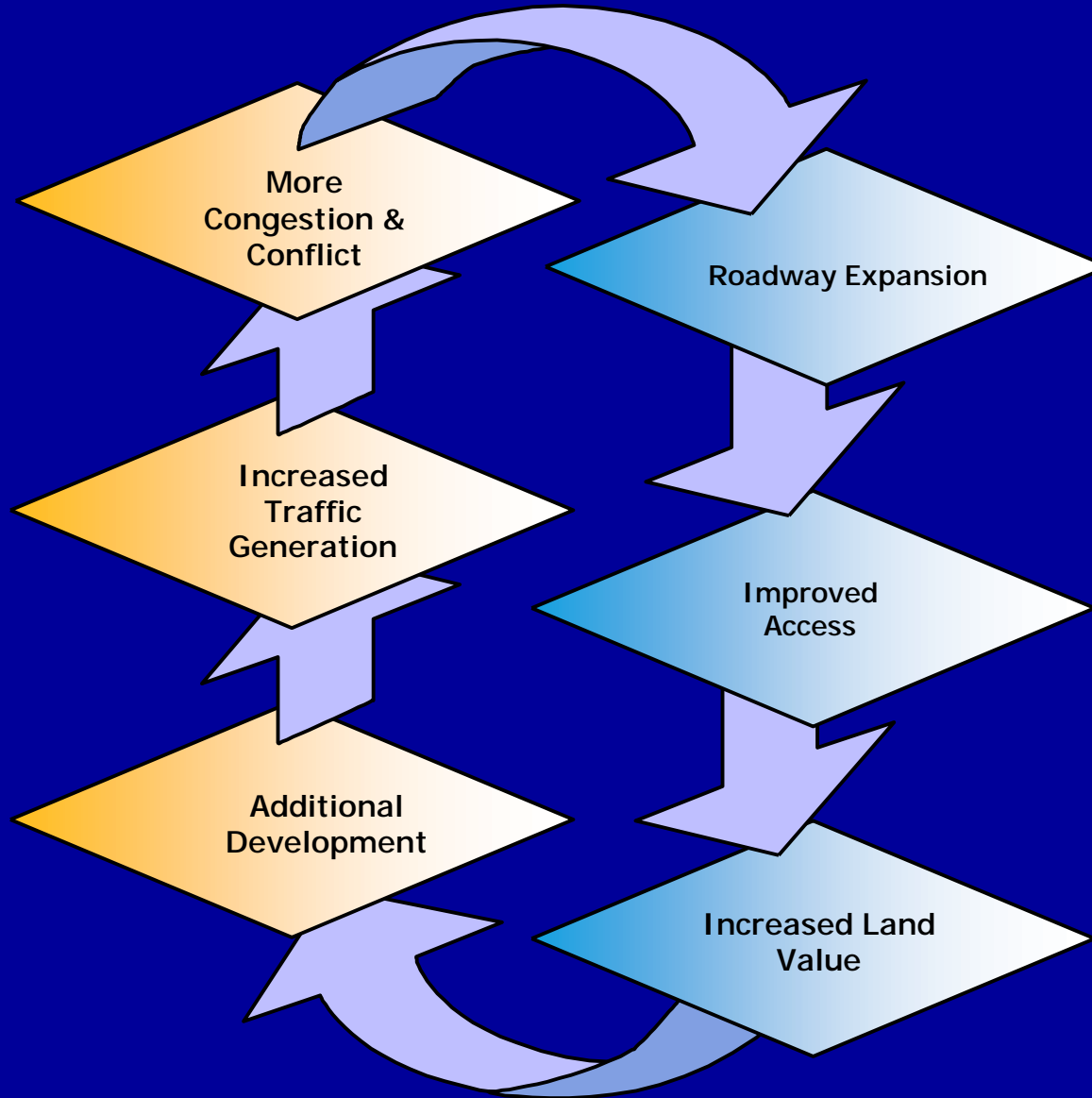
New Hampshire Communities Planning Together

*Presented by NHDOT  
Ansel Sanborn*



*Antioch New England Institute*

# The Highway/Land-Use “Dynamic”



# Land Use / Transportation Connection

- n Transportation is a huge influencer of land use
- n Land use affects use and function of transportation

Therefore:

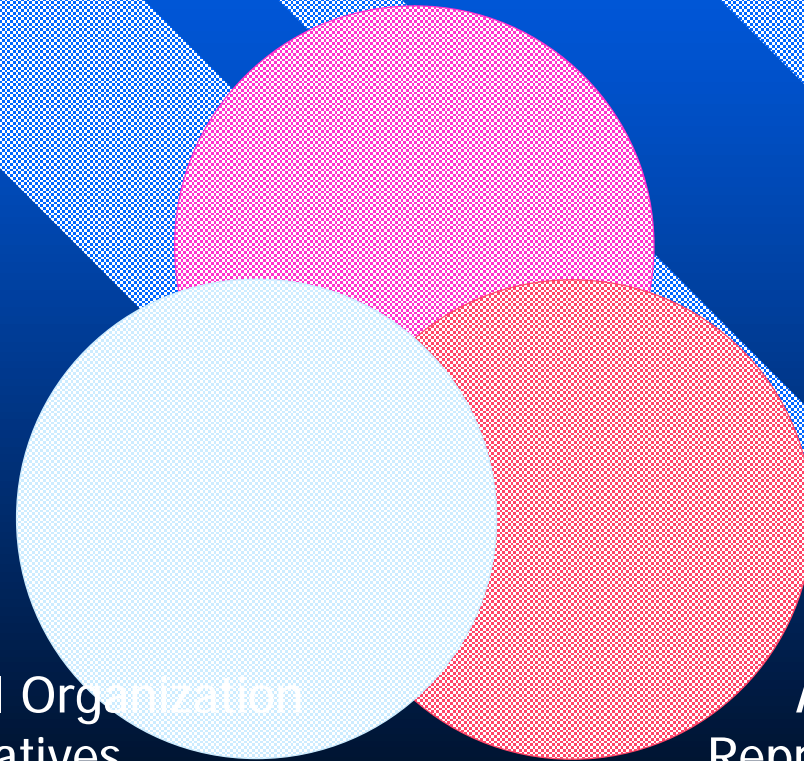
- n Transportation planning should be actively used to achieve land use objectives
- n Land use policy must anticipate its impact on the transportation system

# Who is Involved?

Corridor Community  
Representatives

Non-Governmental Organization  
Representatives

Agency  
Representatives



# Guiding Principles

- n Not driven by a few experts*
- n Raises the base level of knowledge of all participants*
- n Support building of positive relationships between the wide range of participants*
- n Supports and meets the needs of local communities*

# Begin with the Vision

- n Twenty Years from now....if there is sustained growth...How do you want this region and your community to look, to feel, to have as a home?



# The Community Technical Assistance Program Dealing with Growth

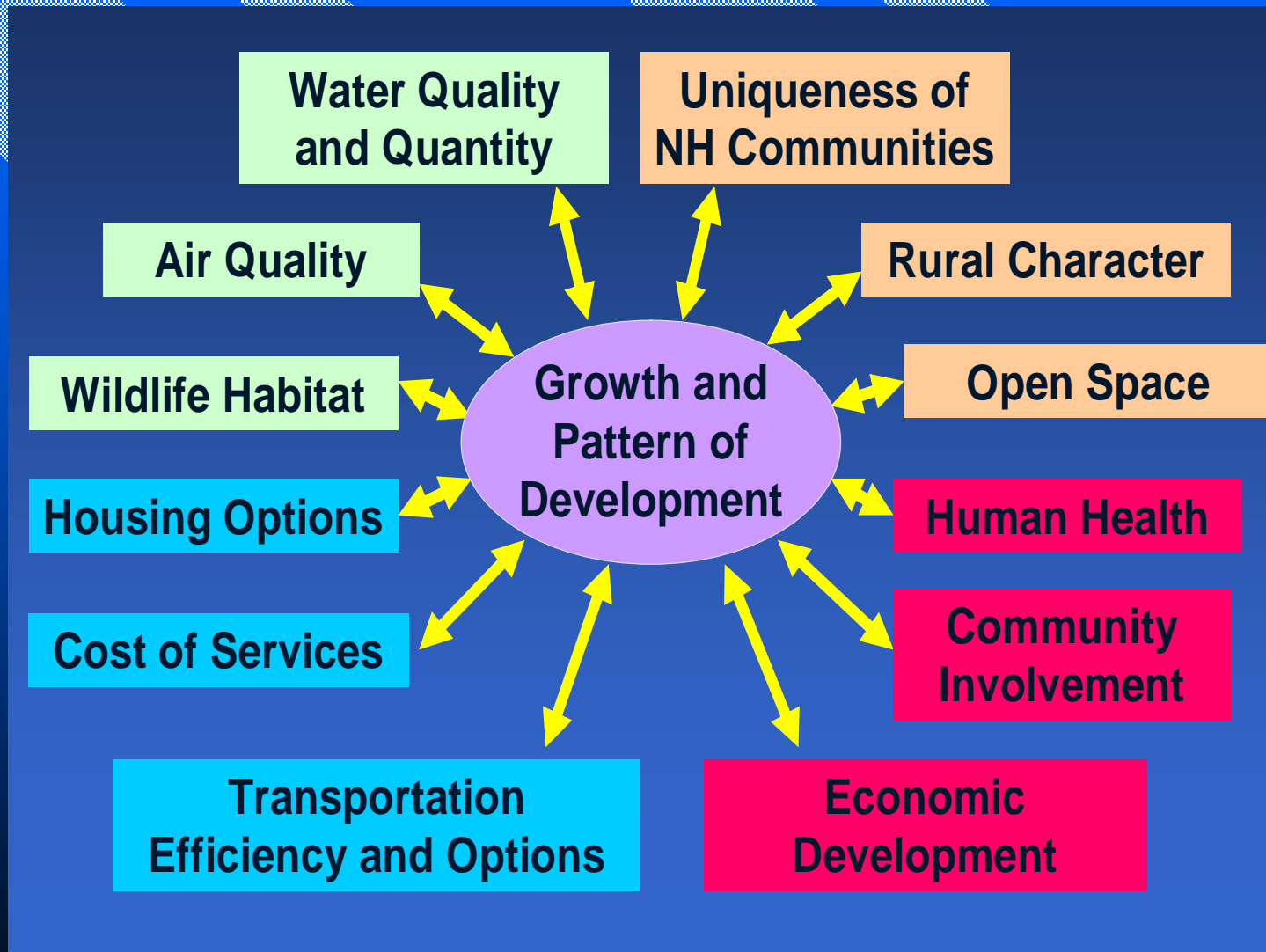
New Hampshire  
**DOT**  
Department of Transportation

LEGEND  
Study Municipalities by  
Regional Planning Commissions

- Central N.H.
- Northern Region
- Rockingham
- Southern N.H.
- Other Municipalities

CTAP will serve a region of 26 cities and towns

# Why CTAP?





# CTAP Purpose

- n Manage Growth
- n Maintain Our Communities



# What is CTAP?

## CTAP Goals

Community  
Infrastructure

Environmental  
Quality/Open Space

Community Vitality  
and Character

Economic Vitality

## Year 1 Programs

### Education/Training

- Annual CTAP Conference
- Communications Plan
- Conservation Commission Institute
- Regional Workshops for Communities

### Direct Technical Assistance

- Local Discretionary Grant (\$15K)
- Open Space Planning Assistance
- Grant Writing Assistance

### Tools and Resources

- Community Assessments
- Updated GIS Land Use Data
- Build-out Analysis
- NSN/Open Space Implementation Support
- Economic Development Inventory
- Connecting Land Use and Transportation

# Land Use - 1962

## 1962 Land Use Rockingham County

### Urban Classes

- Residential
- Industrial/commercial
- Mixed urban
- Transportation/roads
- Railroads
- Auxilliary transportation
- Playing fields/recreation

### Agricultural Classes

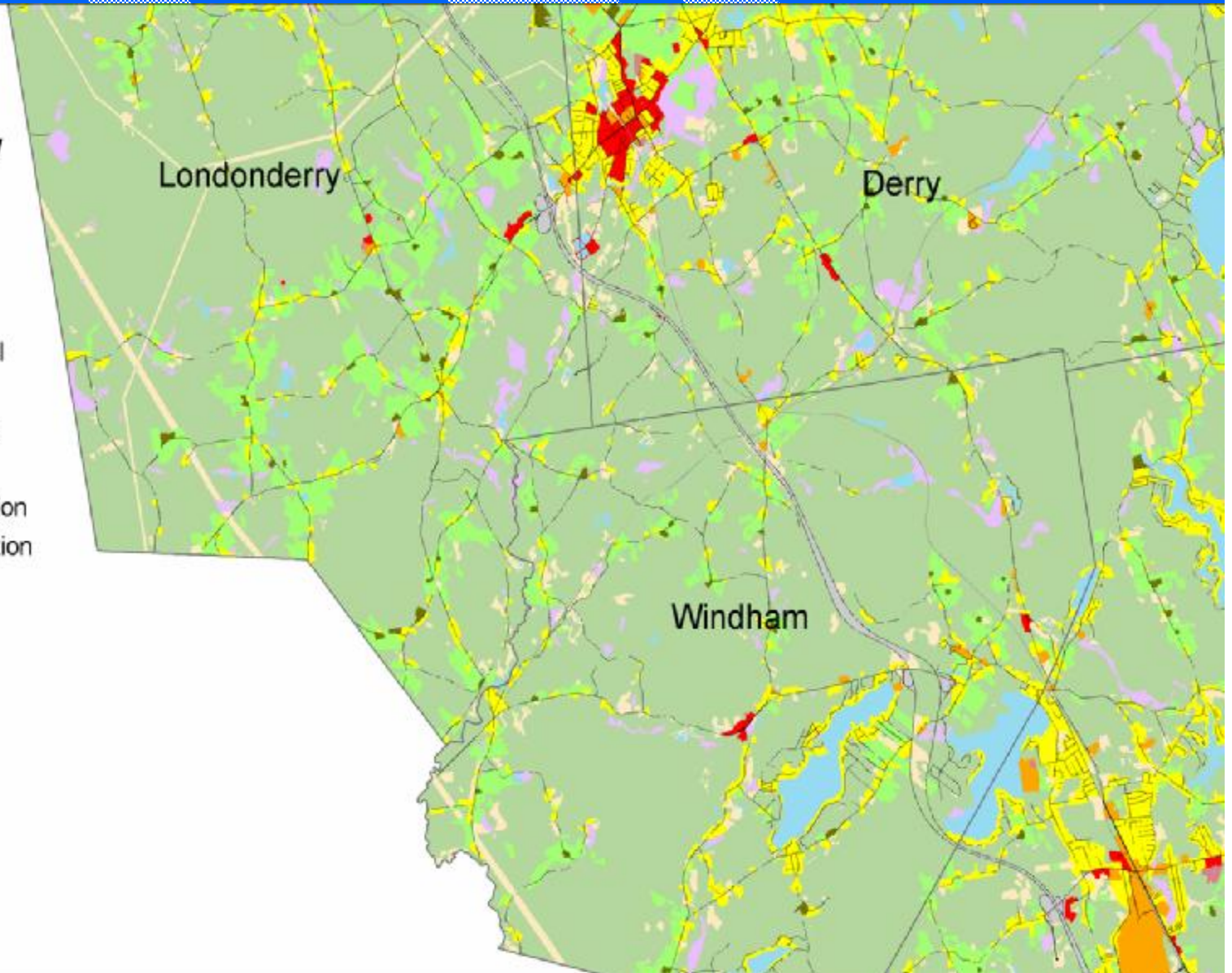
- Active agriculture
- Farmsteads

### Natural Communities

- Forested
- Water
- Open wetlands

### Other

- Idle/other open





# Land Use - 1974

## 1974 Land Use Rockingham County

### Urban Classes

- Residential
- Industrial/commercial
- Mixed urban
- Transportation/roads
- Railroads
- Auxilliary transportation
- Playing fields/recreation

### Agricultural Classes

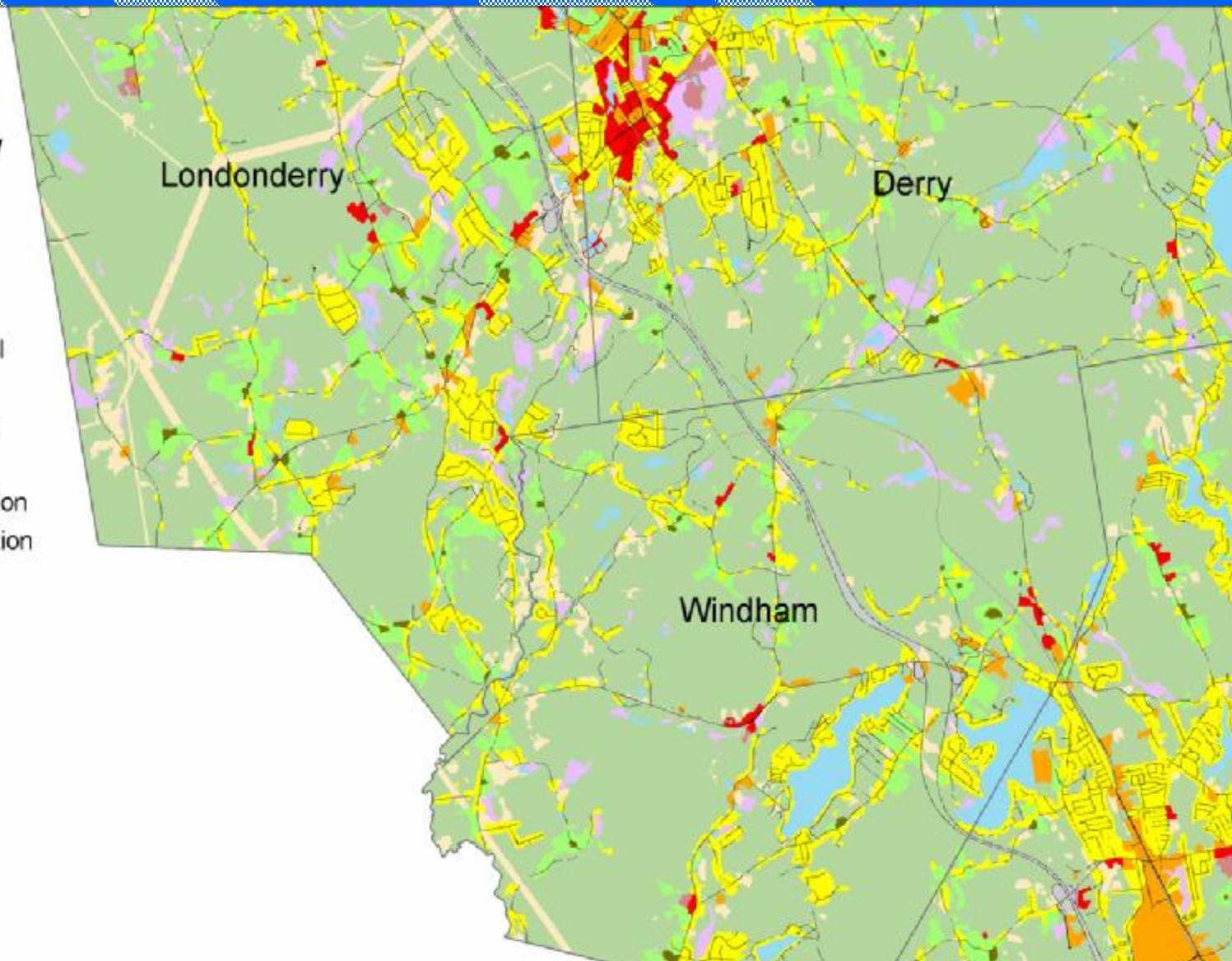
- Active agriculture
- Farmsteads

### Natural Communities

- Forested
- Water
- Open wetlands

### Other

- Idle/other open





# Land Use - 1998

## 1998 Land Use Rockingham County

### Urban Classes

- Residential
- Industrial/commercial
- Mixed urban
- Transportation/roads
- Railroads
- Auxilliary transportation
- Playing fields/recreation

### Agricultural Classes

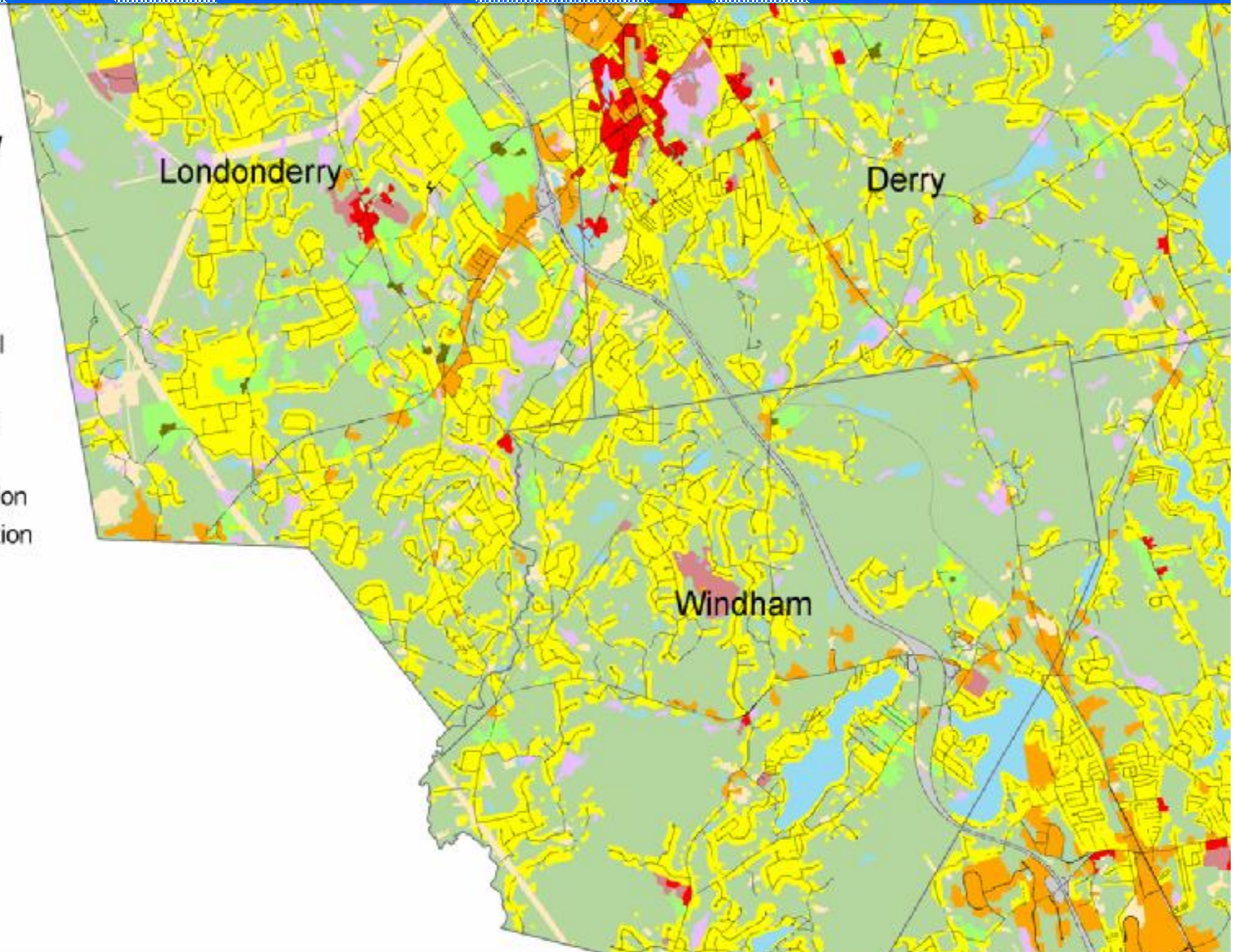
- Active agriculture
- Farmsteads

### Natural Communities

- Forested
- Water
- Open wetlands

### Other

- Idle/other open





# Land Use - 2005

## 2005 Land Use Rockingham County (provisional data)

### Urban Classes

- Residential
- Industrial/commercial
- Mixed urban
- Transportation/roads
- Railroads
- Auxilliary transportation
- Playing fields/recreation
- Other urban (2005 only)

### Agricultural Classes

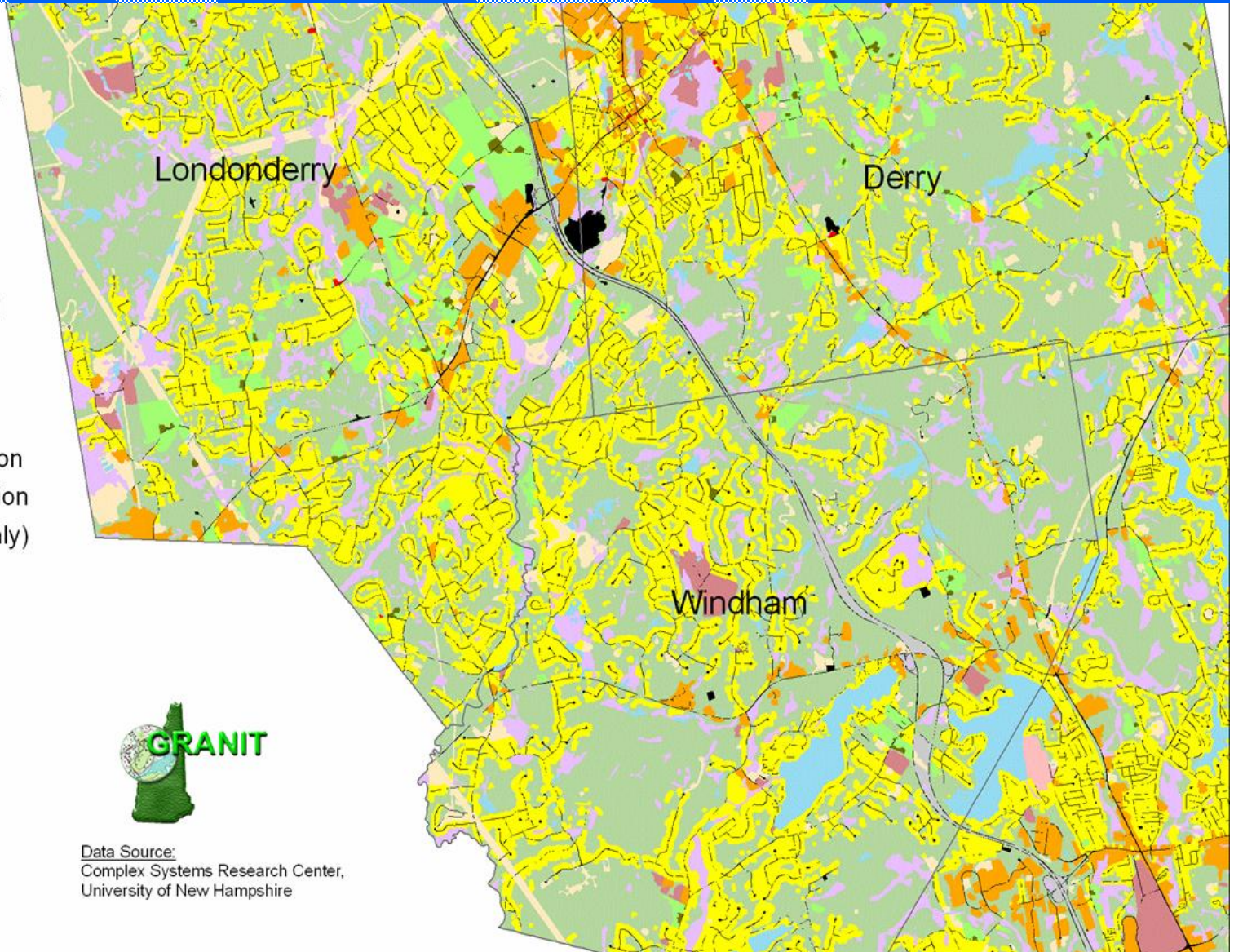
- Active agriculture
- Farmsteads

### Natural Communities

- Forested
- Water
- Open wetlands

### Other

- Idle/other open



Data Source:  
Complex Systems Research Center,  
University of New Hampshire

# Build Out Analysis

Let's Use Pelham as an  
example...



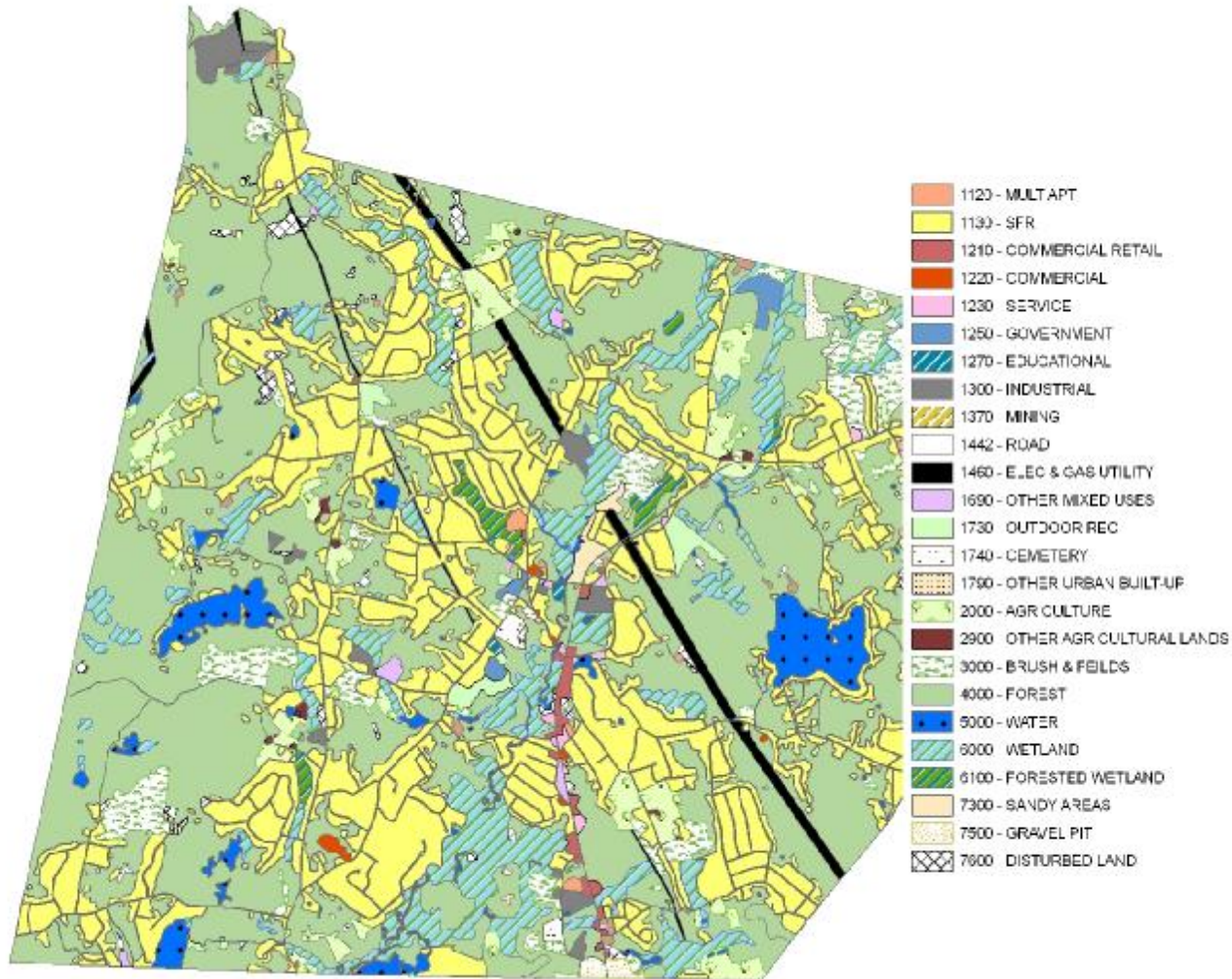


# Detailed Land Use

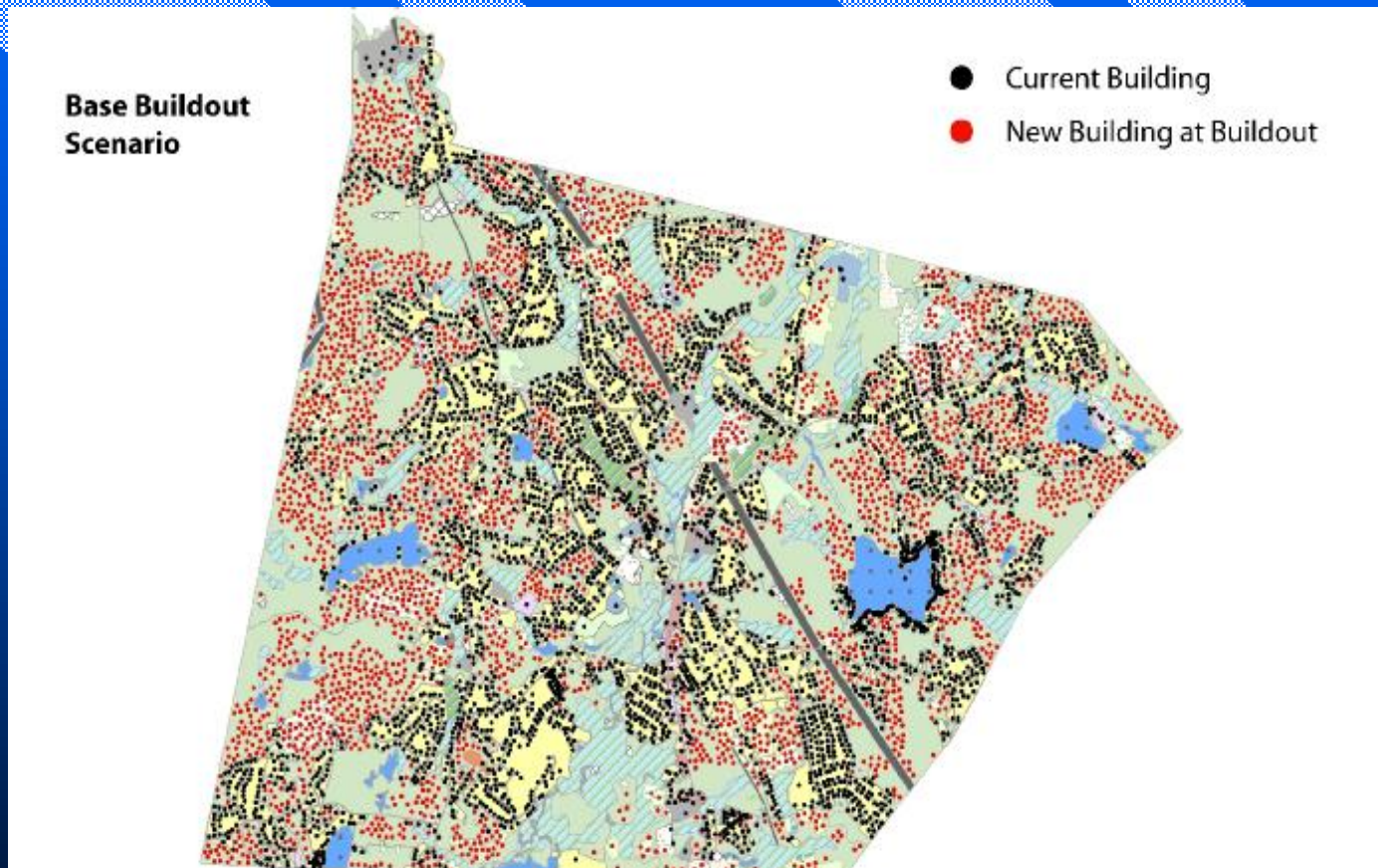




# Townwide Land Use

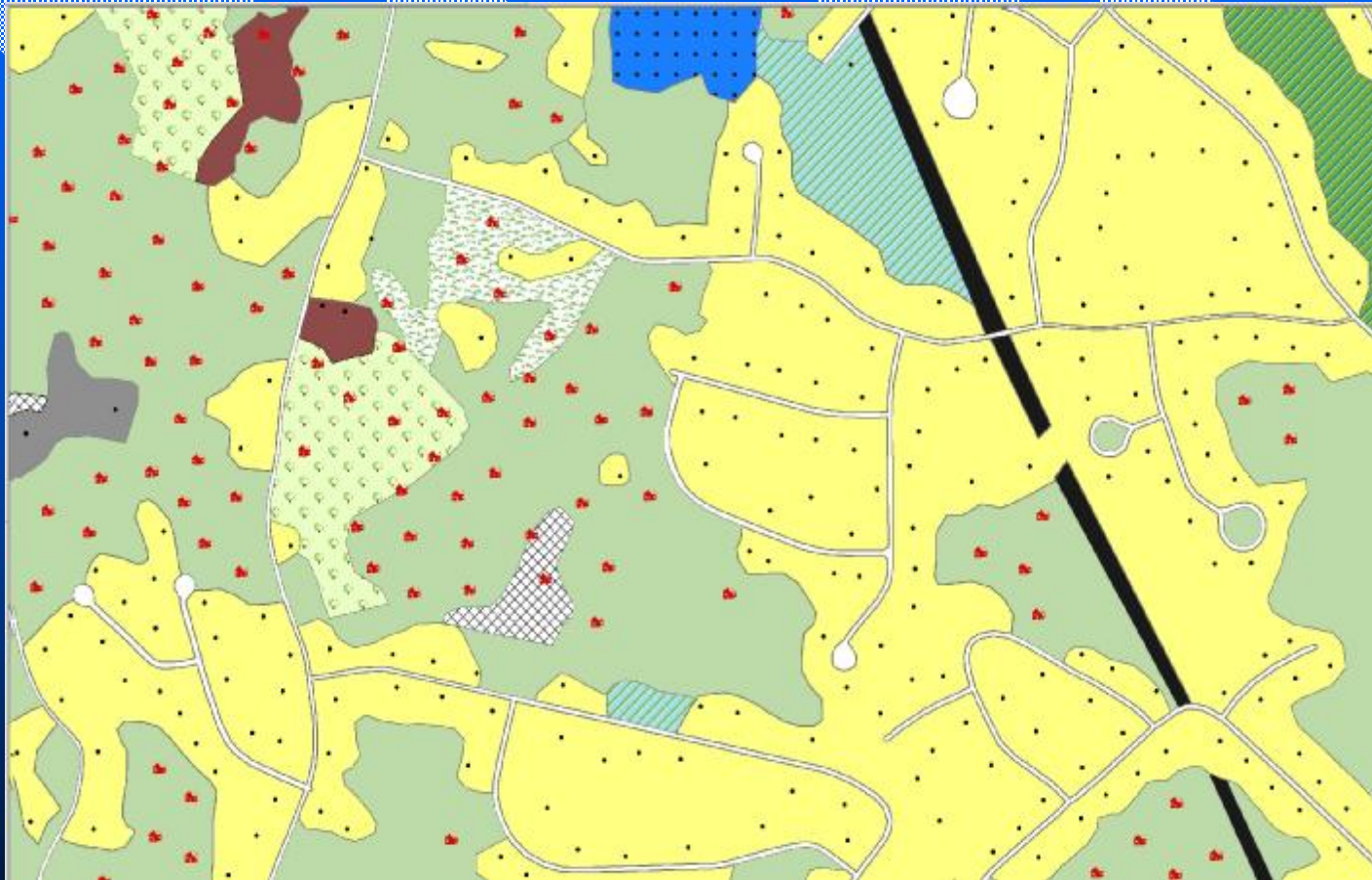


# Townwide Base Buildout

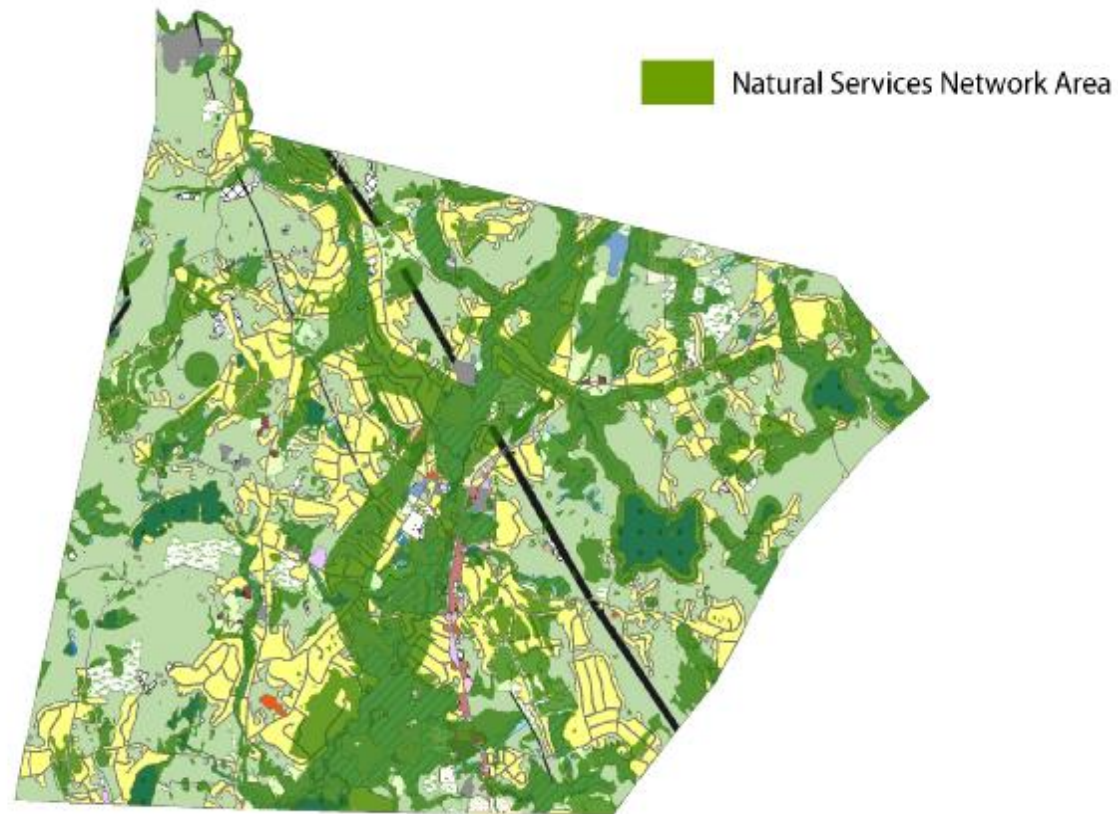




# Detailed Base Buildout

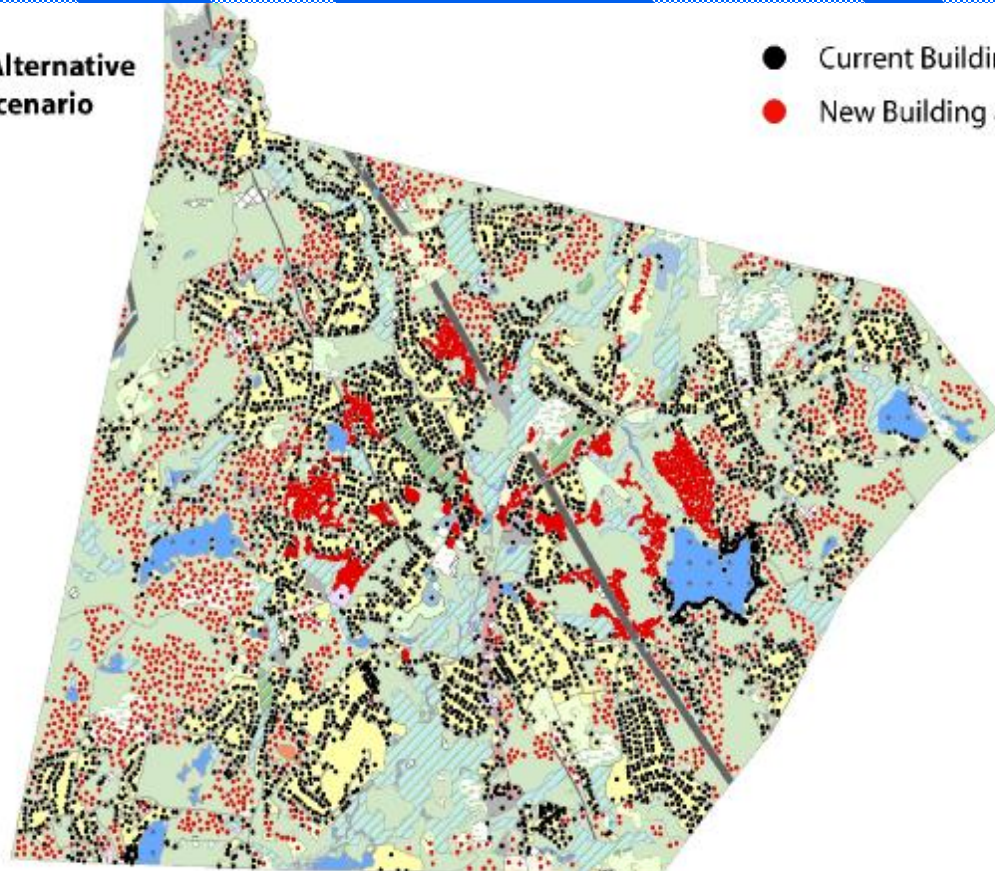


# Natural Services Network



# Standard Alternative Buildout Scenario

**Standard Alternative  
Buildout Scenario**

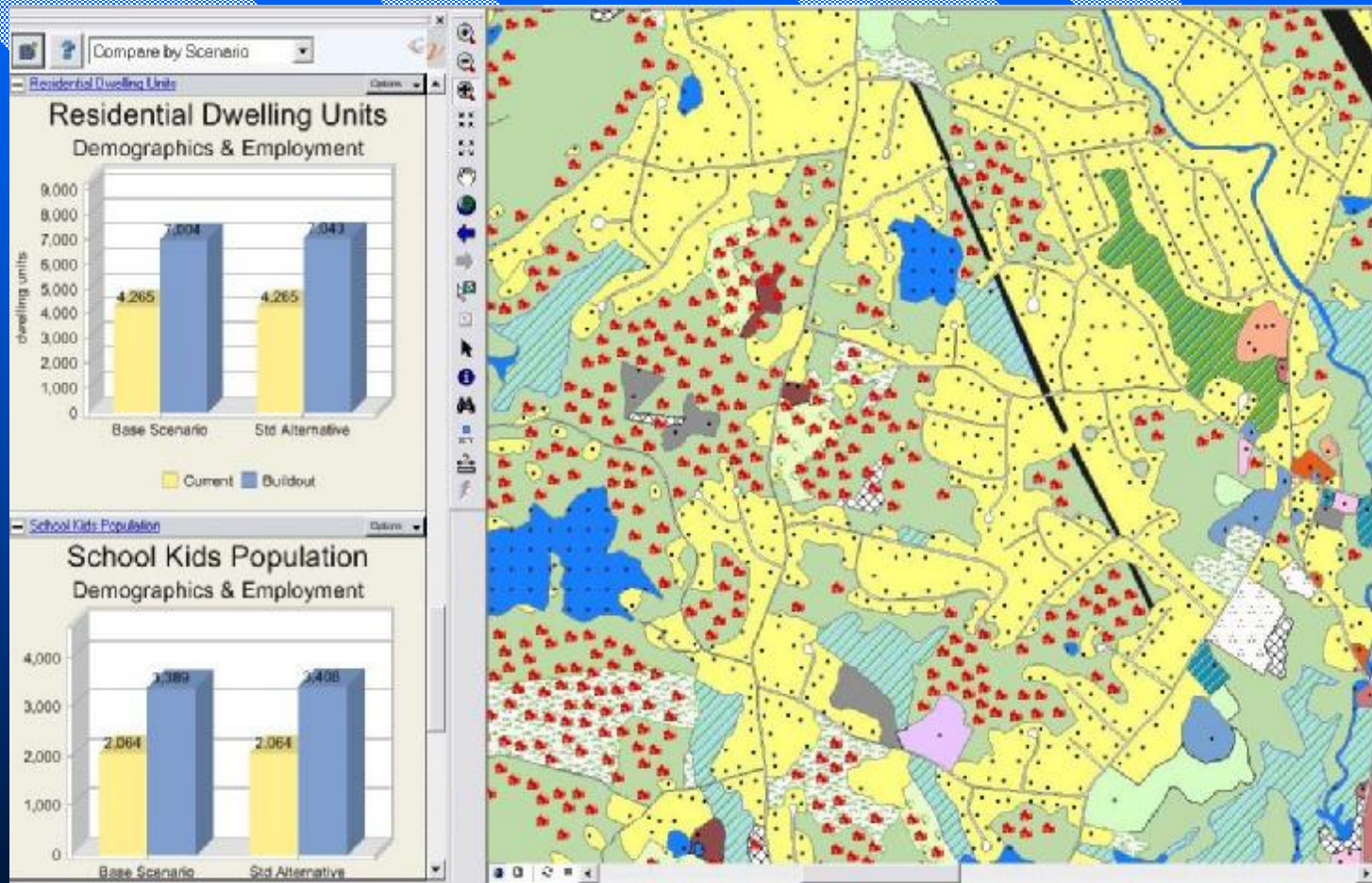


● Current Building

● New Building at Buildout



# Indicators



# More Indicators



# Building Public Support

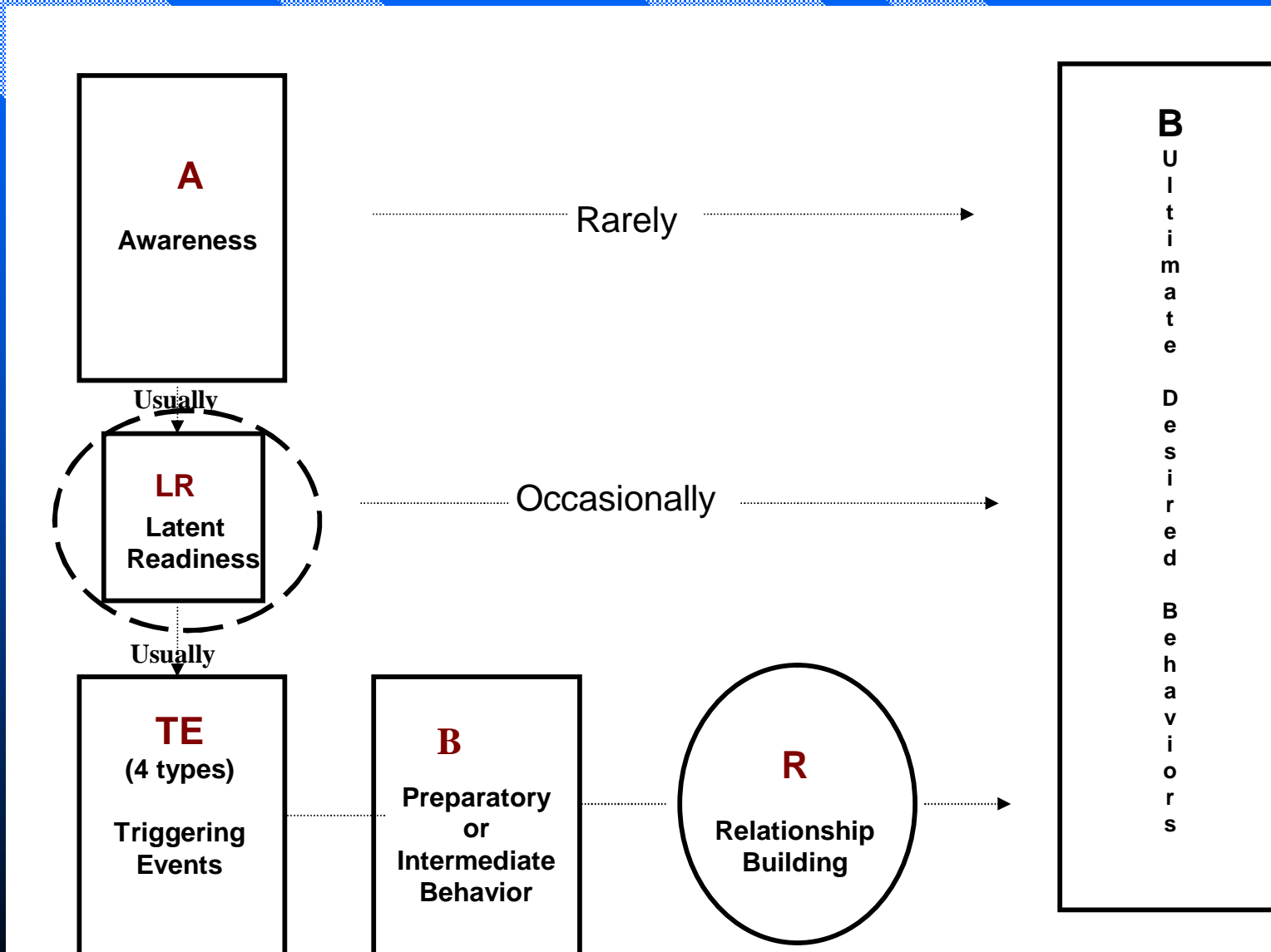
n Behavioral Models, Opinion Leaders & Triggering Events

n “What’s In The Way”





# Behavioral Public Relations Model



# CTAP Phase 2 Programs

- n External Communications Plan Implementation
- n Innovative Local Government Training
- n Targeted Local Government Accounts
- n Local Open Space & Conservation Planning
- n Assistance in Support of Agricultural Resources
- n Enhanced GIS-based Information
- n Inclusionary Zoning Implementation
- n GIS Buildout Analysis and Alternatives

# Conclusions

Questions?

Concerns?

Confusion?

