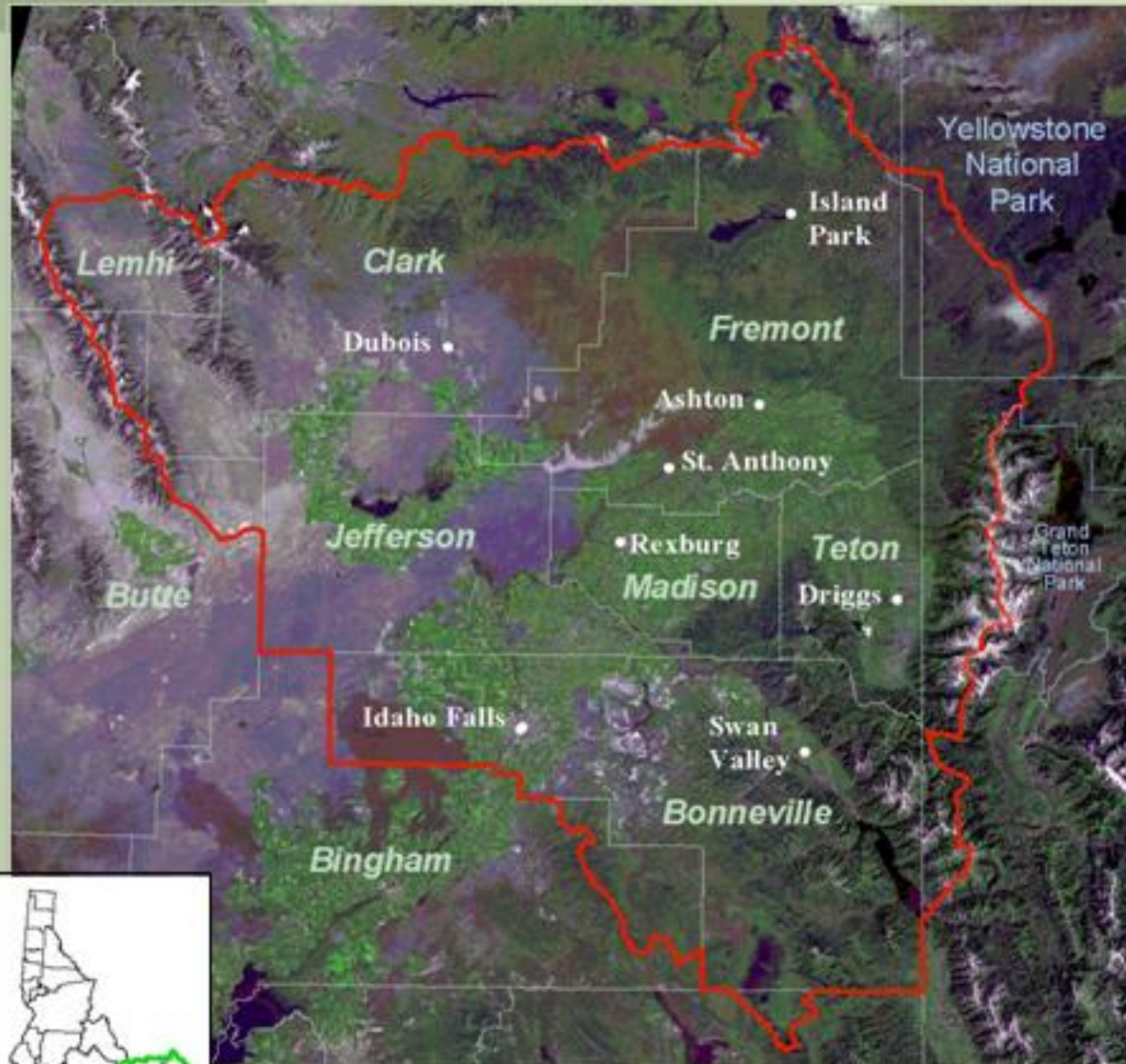


# TETON REGIONAL LAND TRUST

## **Community-based Conservation in the Upper Snake River Valley**

*Saving the Rivers. Saving the Land*

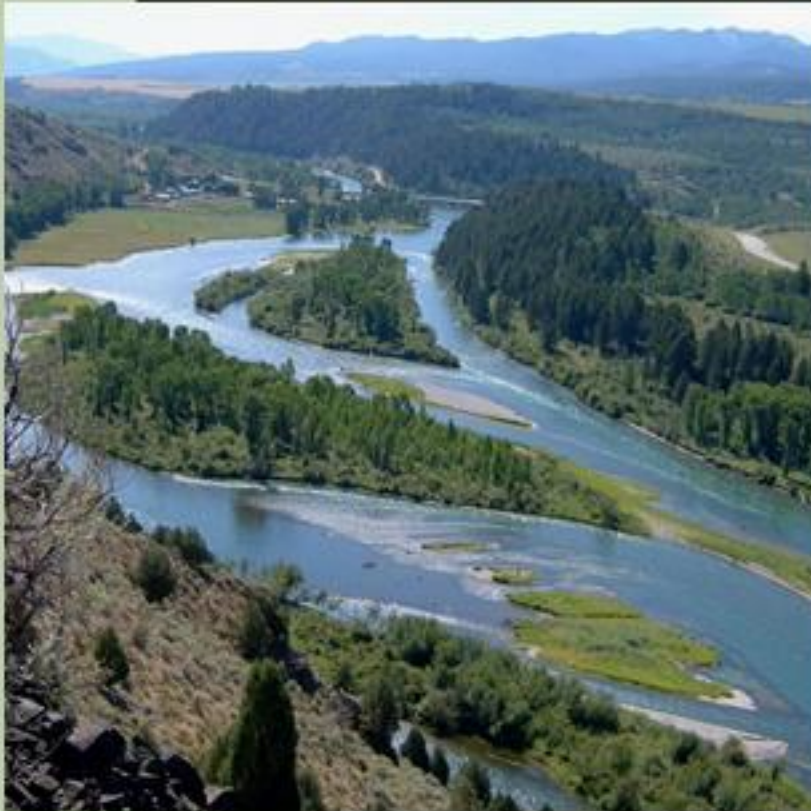
# Our Service Area



## Our Mission

... to conserve natural and agricultural lands and to encourage land stewardship in the Upper Snake River Watershed for the benefit of today's communities and as a legacy for future generations.

# Priority Natural Resources Dependent on Private Lands



- **Wetlands, Wetland-dependent Birds**
- **Native Trout, Riparian Corridors**
- **Big Game Winter Range & Migration Corridors**
- **Rare Upland Birds**
- **Rare Plants and Communities**
- **Strategic Ranch Lands**
- **State High-Quality Farmland**

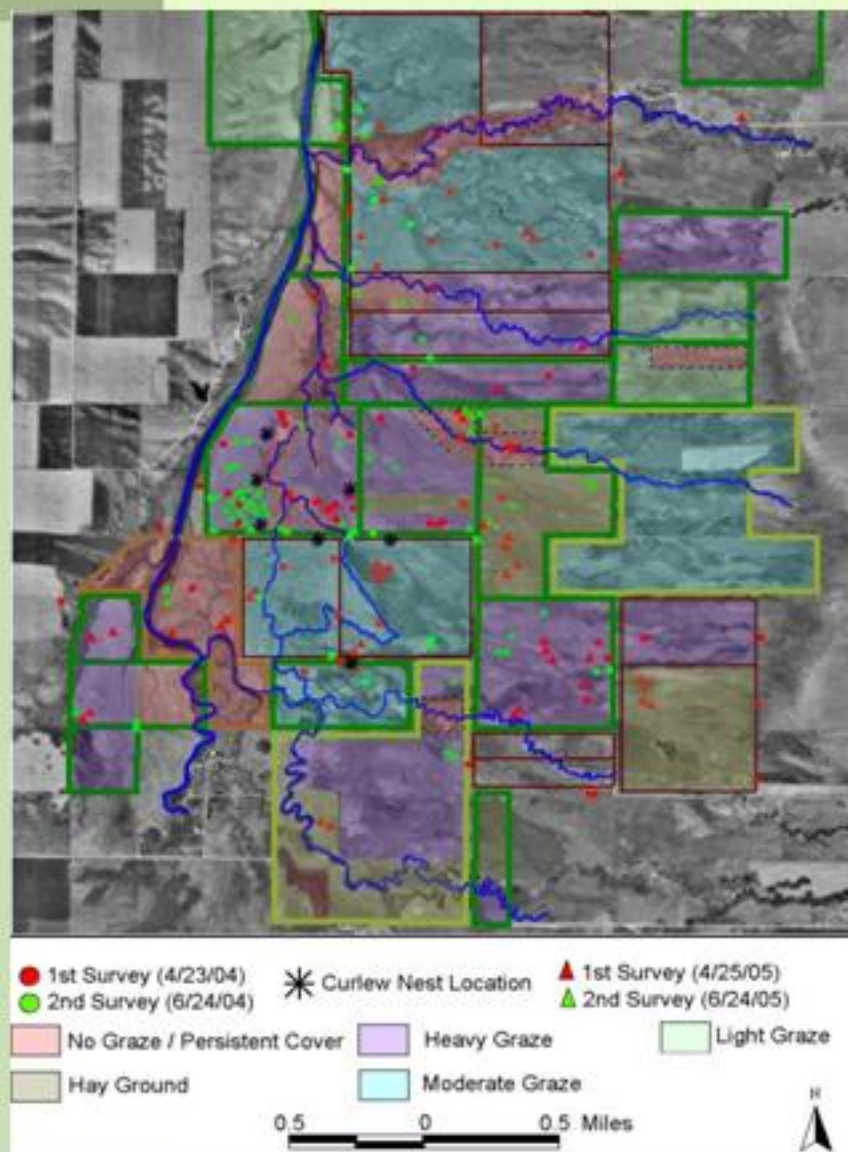
# Why restoration and management...

## The Foster's Slough Example

- Landowner services
- Landscape scale impacts



# The Foster's Slough Example



*Ecological  
Monitoring*



*Long-billed Curlew  
Monitoring  
2004-2005*

# The Foster's Slough Example



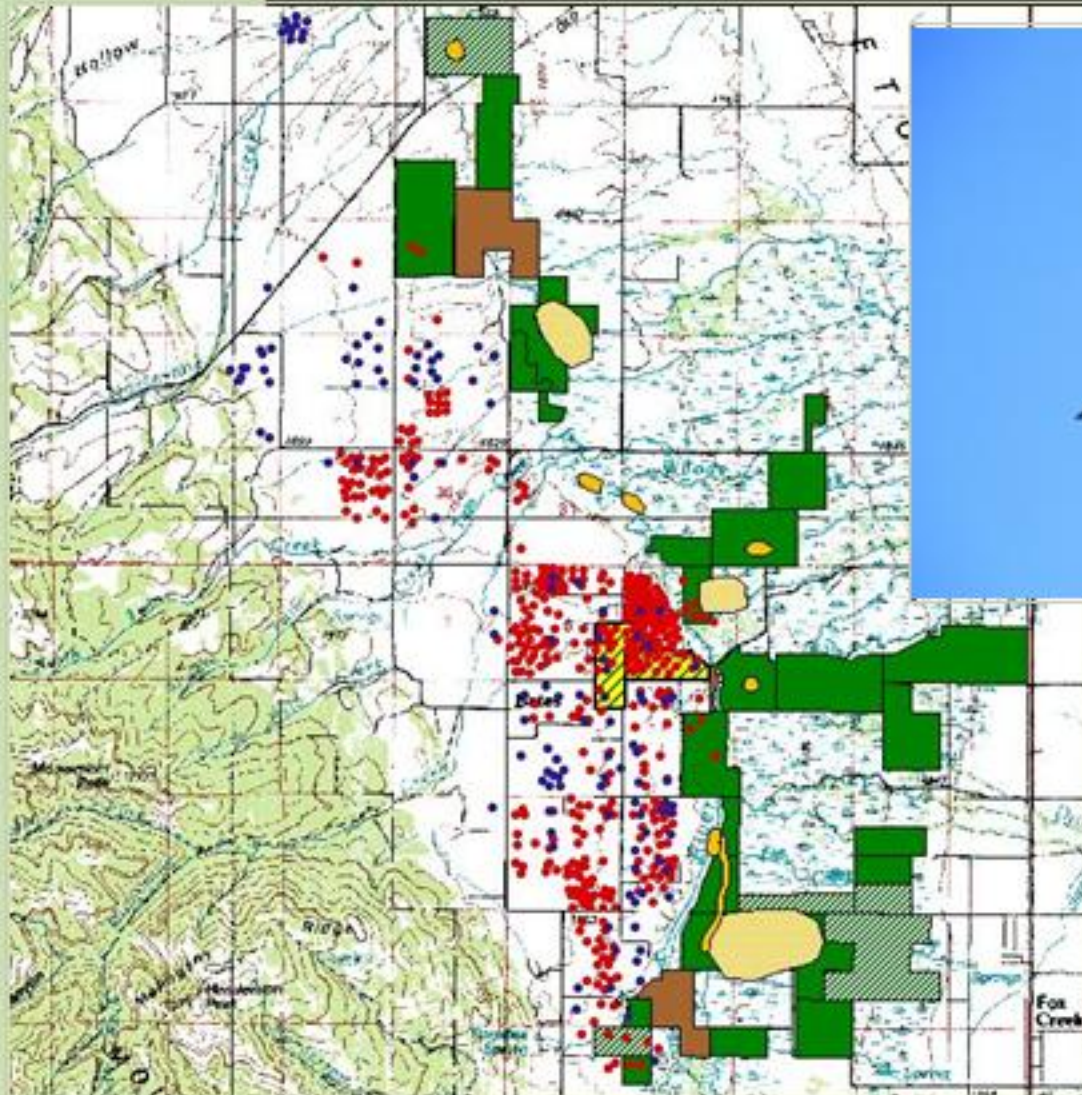
No Graze / Persistent Cover    Heavy Graze    Light Graze  
Hay Ground    Moderate Graze

0.5    0    0.5 Miles

*Stewardship and  
Restoration*



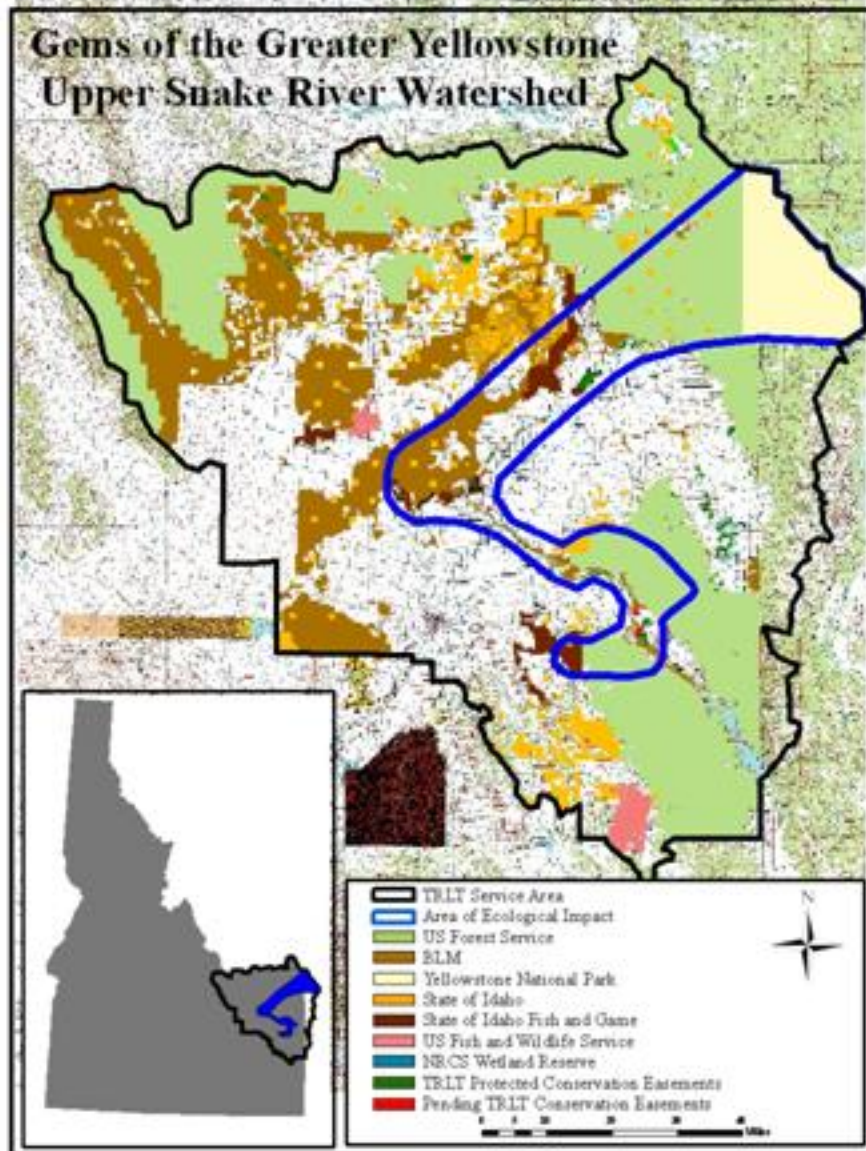
# Sandhill Crane Ecology & Conservation in the Teton River Basin



(c)TomVezo.com

# Large mammal migration

## Regional Significance





# Strategic Program for Protecting Priority Natural Resources



- Collaborative conservation planning
- Resource surveys
- Easements, restoration agreements, management plans
- Targeted restoration, partnerships
- Long-term stewardship, ecological monitoring
- Education, outreach

# Riparian and Wetland Restoration and Enhancement



**4,000 acres to benefit  
wetlands wildlife; miles  
of river corridor for  
native fish**

**National Wetlands  
Conservation Award to  
the Private Sector for  
“Excellence in  
developing, enhancing  
and restoring wetlands”  
from US Fish & Wildlife  
Service**

# Momentum and Powerful Partnerships



- **Private Landowners, traditional and new**
- **Local donors**
- **Volunteers of all ages**
- **Conservation Districts & Natural Resources Conservation Service**
- **US FWS, Partners for Wildlife,**
- **Idaho Dept Fish & Game**
- **Conservation Organizations**
- **North American Wetlands CC – Int. West Joint Venture**

# Challenges and Solutions



- **Management challenges:** working lands, vegetation management
- **Legal challenges:** meeting resource and funder-driven targets on private lands
- **Ecological challenges:** long-term targets hard to reach, dynamic species relationships
- **Big landscape challenges:** watershed to continental

