



Columbia
LAND TRUST

Land Trust Alliance
Northwest Rally
May 18th, 2007

Columbia Land Trust



*Conserving signature landscapes and vital habitat together
with the landowners and communities of the Columbia River region.*

Columbia Land Trust expanded region 1998



2001 Conservation Planning Priority Habitats:

Columbia River floodplain
and islands



Coastal wetlands and forests



East cascade
oak woodlands



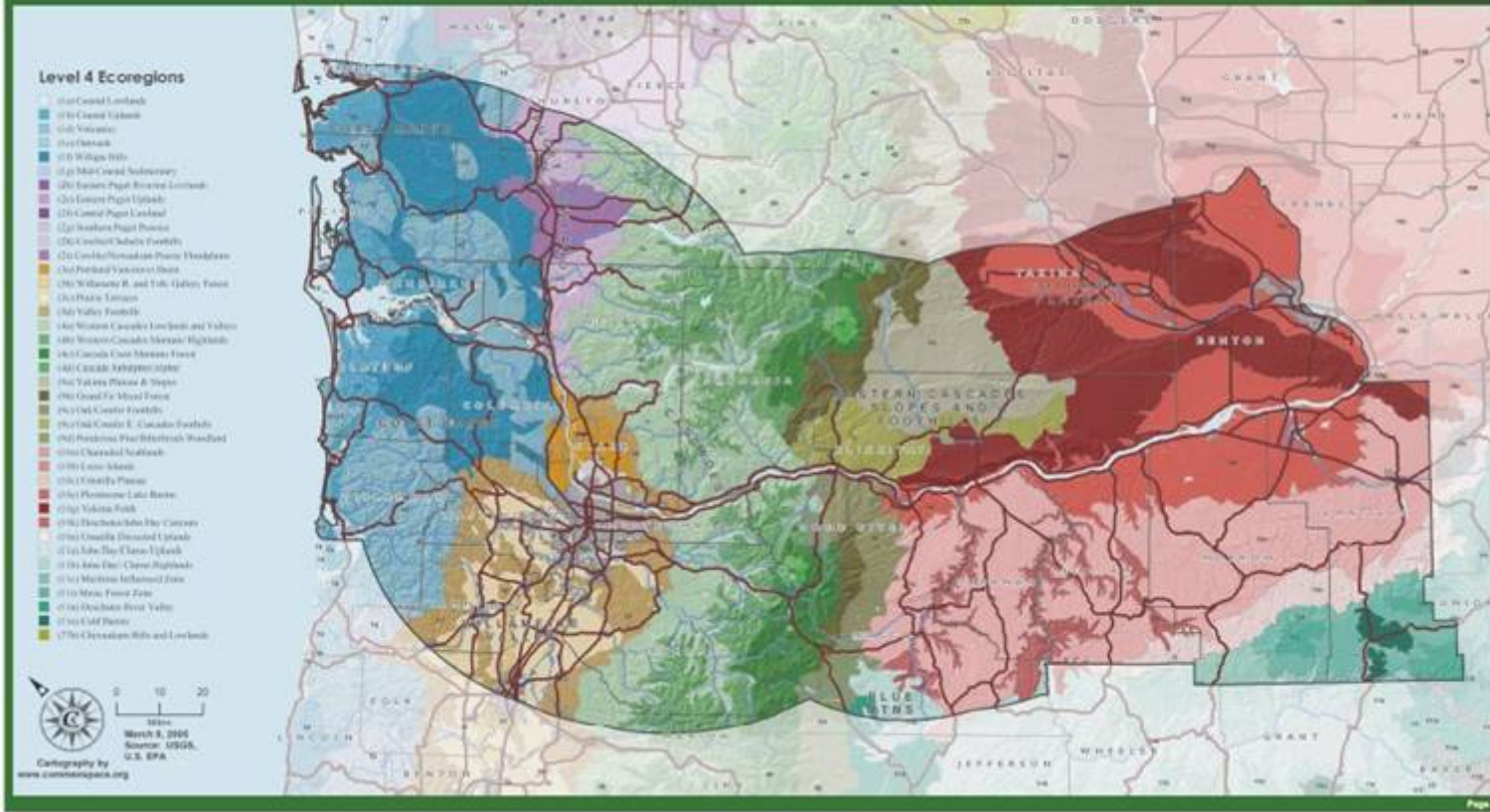
Columbia River tributaries
and riparian habitats



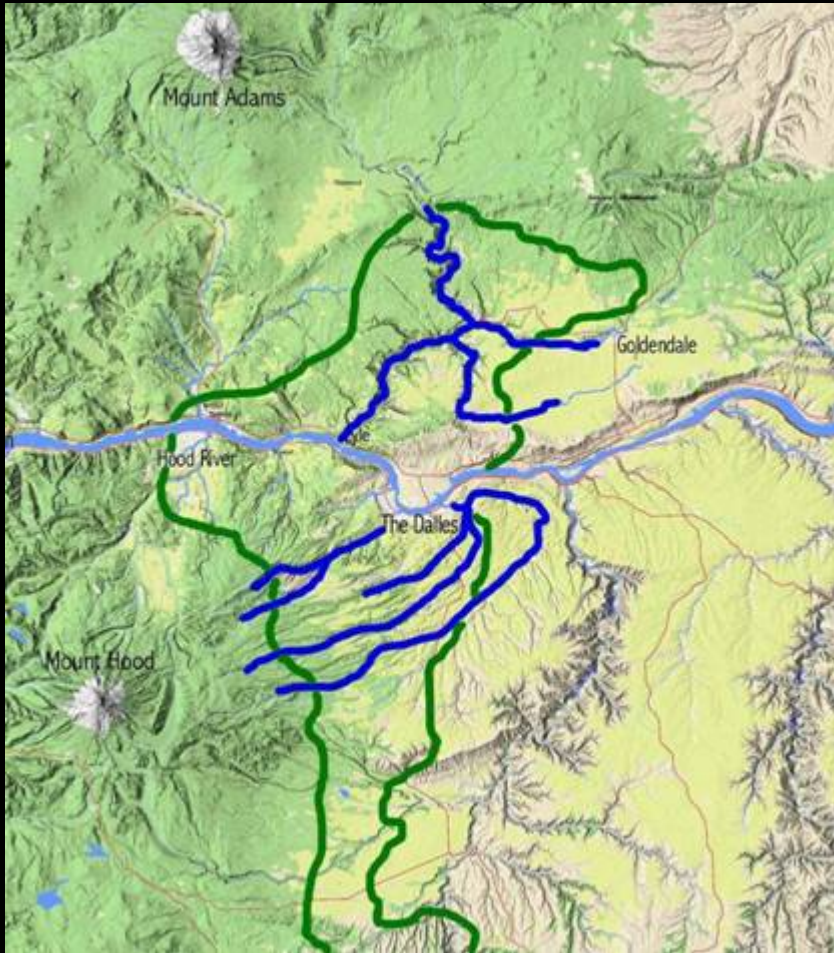
2007 Conservation Planning

Ecoregions

Columbia Land Trust



2001 Conservation Priority: Oregon white oak woodlands



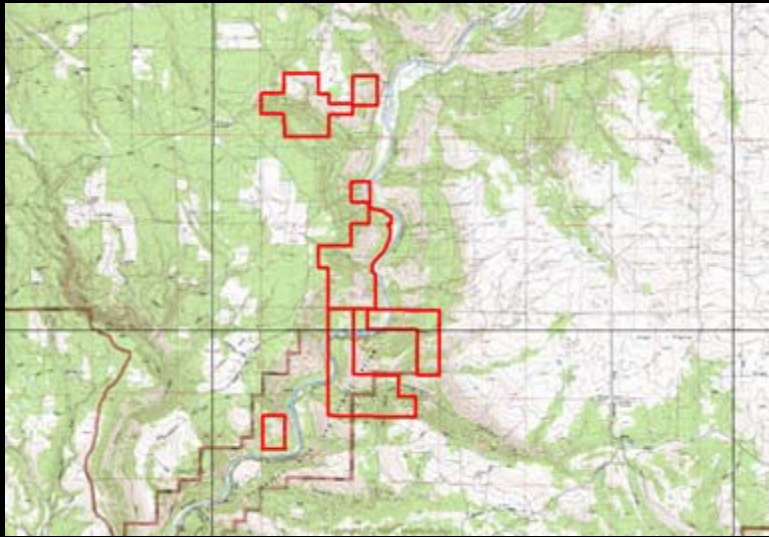
Threats to Oregon white oak woodlands







Klickitat River Columbia Land Trust Ownerships



**PROPERTY STEWARDSHIP PLAN SUMMARY
COLUMBIA LAND TRUST
Klickitat River Watershed
1/17/06**

Long Term Objectives

- **Desired Future Condition**

1. Mixed oak-conifer forest, oak woodlands and oak savannah in historic, fire-tolerant densities with native understories, supporting diverse wildlife and providing habitat for endangered or sensitive species.

YEARS: 100+

- **Conservation Values**

1. Oak and pine woodlands
2. Wildlife and fish habitat – R,T&E
3. Riparian Corridors
4. Oak savanna/grassland
5. Talus slopes
6. Conifer forests



Restoration Objectives

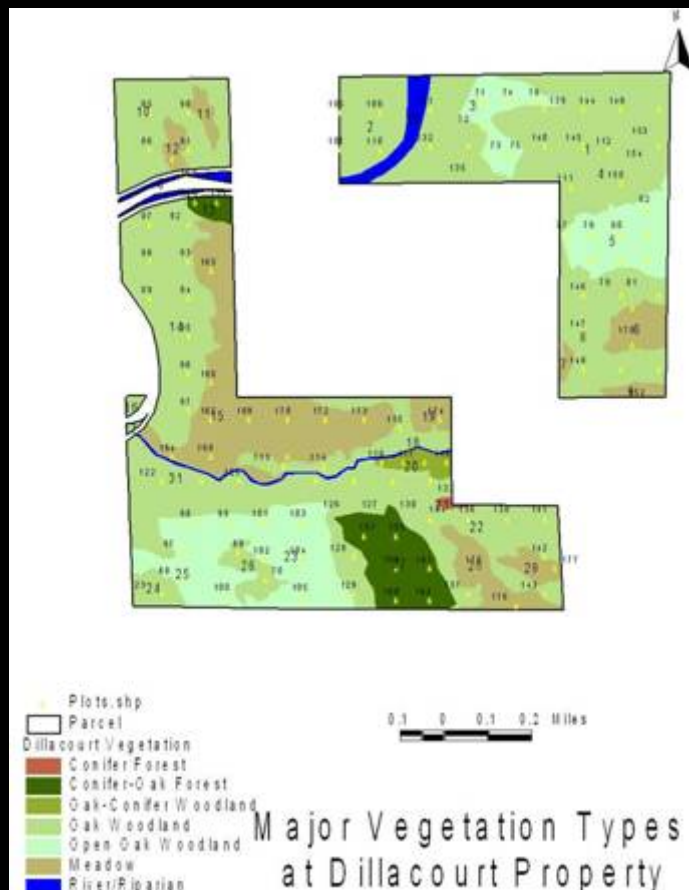
- Improve mast production and wildlife cavity resources in existing OR white oaks
- Increase light levels to understory to recover native grass/forb dominated plant community
- Reduce risk of high severity/intensity fire
- Increase down wood levels of larger diameter boles at levels that do not contribute to crown fire behavior
- Balance maintenance/restoration of habitat conditions for WGS with fire regime objectives above



Baseline Data Collection
Plant and animal surveys
Weed inventory
Fire fuels transects



Forest Monitoring Plots/Inventory



170 plots implemented to:

- Determine current density and composition
- Model fire behavior
- Compare key parameters
- Assess viability of habitat
- Monitor effects over time
- Evaluate adaptive management strategies

Planning





BEFORE TREATMENT



BEFORE



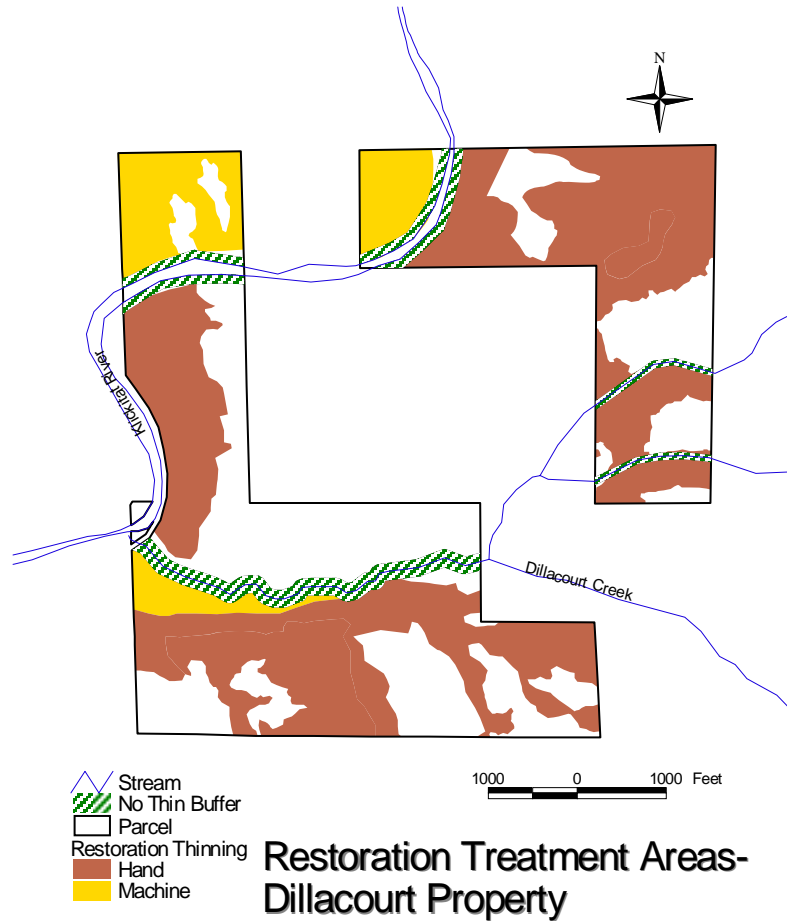
AFTER TREATMENT



Variable density thinning of oak woodland



Treatment Methods



Dealing with Slash



Lighting and Fighting



Burn piles as seed sources



Balancing pile burning with other concerns... air quality, uncontrolled fire, colonization, sterilization



Understory restoration plots





Thank you.

