

2035 Regional and Statewide Environmental Planning

Linking Conservation and
Transportation Planning

August 15, 2006

Meeting SAFETEA-LU Planning Requirements in Colorado

- n Environmental Consultation Approach
- n Environmental Mitigation Approach
- n Your Input!

SAFTEA-LU Part 6001

Metropolitan Planning

Statewide Planning

n §134(i)(2)(B) ↔ n §135(f)(4)

n §134(i)(4) ↔ n §135(f)(2)(D)

Two SAFETEA-LU Pieces

- n **Consultation: Comparison** of transportation plans to State and tribal conservation plans or maps, and comparison of transportation plans to inventories of natural or historic resources
- n **Mitigation: Discussion** of potential environmental mitigation activities and potential areas to carry out these activities developed with resource agencies

MOVING COLORADO

Vision for the Future
2030 Statewide Transportation Plan



INTRO

STATEWIDE SYSTEM

REGIONAL PLANS

FEEDBACK & LINKS

I-70

SELECT A SYSTEM



GOALS

- Maintain or improve pavement to optimal condition
- Support commuter travel
- Accommodate growth in freight transport
- Maintain statewide transportation connections
- Provide safe movement of bicycle/pedestrians

STRATEGIES

- Add new Interchanges/Intersections
- Add general purpose lanes as needed
- Provide and expand transit bus and rail services
- Provide bicycle/pedestrian facilities
- Construct and maintain Park'n Ride facilities
- Improve ITS Incident response, Traveler Information and Transportation Demand Management



QUIT

© 2004 Colorado Department of Transportation. All Rights Reserved.

MOVING COLORADO

Vision for the Future
2030 Statewide Transportation Plan



INTRO

STATEWIDE SYSTEM

REGIONAL PLANS

FEEDBACK & LINKS

← BACK TO REGIONAL PLANS MAP

SELECT A
CORRIDOR



NORTHWEST SH 13 CORRIDOR

VISION

GOALS

STRATEGIES



The Vision for the State Highway 13 corridor is primarily to improve safety and to maintain system quality. This corridor serves as an inter/intra-regional facility that provides local access as well as a north-south connection linking the communities from Rifle north to the Wyoming border area. Future travel modes include passenger vehicle, truck freight and aviation (Meeker Airport).

Based on historic and projected population and employment levels, both passenger and freight traffic volumes are expected to increase. The communities along the corridor value safety, systems preservation and connections to other areas. They depend on tourism and agriculture/ranching for their economic livelihood. Users of this corridor want to preserve the rural character of the area while supporting the movement of tourists, recreational usage, commuters, freight, and farm-to-market products in and through the corridor while recognizing the environmental, economic and social needs of the surrounding area.

QUIT

© 2004 Colorado Department of Transportation. All Rights Reserved.

Demonstrating Compliance

- n Problem: How to demonstrate that the consultations required in §134(i)(4) and §135(f)(2)(D) actually took place
- n Solution: Develop corridor descriptions of natural and historic resources present in the corridor, or potentially affecting activities within that corridor (not the mitigation discussion)

Approach

- n Ask Resource Agencies if we have correct data to compare with Plan Corridors (TERC)
- n Overlay Environmental Resources and Conservation Plans with Statewide Plan Corridors
- n Include environmental resource/conservation tab on corridor vision in 2035 Plans



NORTHWEST SH 13 CORRIDOR

Environment

GOALS

STRATEGIES

Resources

- n Archaeological resources
- n Wildlife crossings
- n Green River Basin
- n Black Footed Ferret
- n Historic Properties
- n Gold Medal Fishing

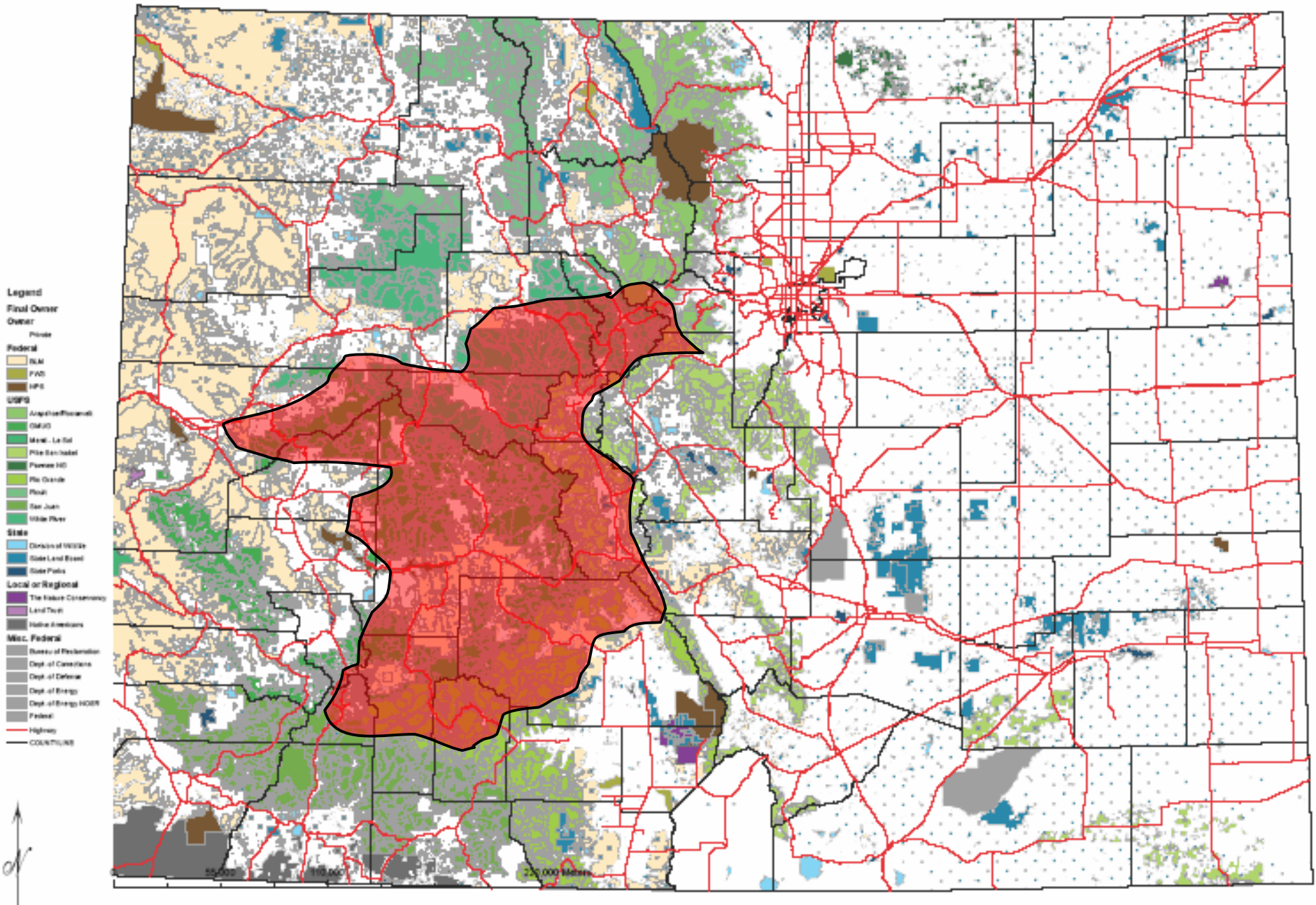
Conservation Plans

- n Colorado River Compact

Mitigation Approach

- n Develop a single, statewide, mitigation discussion based on resource rather than transportation boundaries that is applicable to all planning corridors and transportation improvements within the resource area
- n One mitigation strategy for a resource (regardless of how many corridors include that resource)

Public Lands Area for State of Colorado



What are the Benefits to this approach?

- n Develop SAFETEA-LU compliant Plan
- n Help public, policy and transportation community understand environmental resources in their area (early scoping)
- n Select projects that may benefit resources, i.e., wildlife crossings
- n Identify areas for proactive conservation programs, i.e., banking

2035 Plan Schedule

- n Resource/Regulatory Agency Comments on Inventories/Conservation Plans Oct, 2006
- n Resource Inventory Comparison Dec, 2006
- n Draft Mitigation Strategies Feb, 2007
- n Final Mitigation Strategies March, 2007
- n Draft TPR/MPO Plans Spring, 2007
- n Final TPR/MPO Plans Oct-Dec, 2007
- n Final Statewide Plan Early, 2008

2035 Environmental Planning Contacts

n Yates Oppermann: 303-757-9497

n Aaron Willis: 303-757-4019

n Kathy Engelson: 303-757-9770